

Berwick Secondary College (7603)

2006 School Level Report

Please check the data in this report. If, after comparing it with your own records, you deem it to be incorrect or incomplete, follow the directions on the web page below:

- <http://www.sofweb.vic.edu.au/standards>, then click on '**Accountability and Improvement**', then click on '**School Performance Reports**'.
-
-

Contents

	Page No.
Confidentiality	3
'Like' School Group chart	4
Teacher Assessments against the VELS/CSF	5-13
AIM Reading	14
AIM Mathematics	15
VCE Results	16-21
VCE study scores of 40 or more	22
VET	23
VCAL	24
Teacher Assessment of Student Progress (PSD students)	25-26
Enrolments	27
Apparent Retention	28
Real Retention	29
Exit Destination	30-33
Student Absence	34
Parent Opinion	35
Staff Opinion	36
Staff Sick Leave	37
Teaching Staff Retention	38
Bank Balances	39

Confidentiality

When reporting on the school's performance to the school community, care must be taken to avoid the disclosure of information that can directly or indirectly identify an individual. This may be a particular issue when reporting on the achievement of specific cohorts of students or the opinions of staff where there are small numbers.

In situations where confidentiality cannot be assured, schools may wish to report on the mean result or provide a written comment on school, year level or cohort performance.

Where the School Level Report is provided to school council members as part of any annual reporting process, or used for discussion on a school's performance, such as in consultation with the school community in the school self-evaluation process, it is important to remind school community members of their duty to only use this information for the purpose it was provided, and that the material must be kept confidential.

It is important to note that information that identifies an individual or can be used with other readily available information to identify a person is now protected by the *Information Privacy Act 2000* (<http://www.education.vic.gov.au/about/deptpolicies/informationprivacy.htm>).

'Like' School Group

School no: 7603

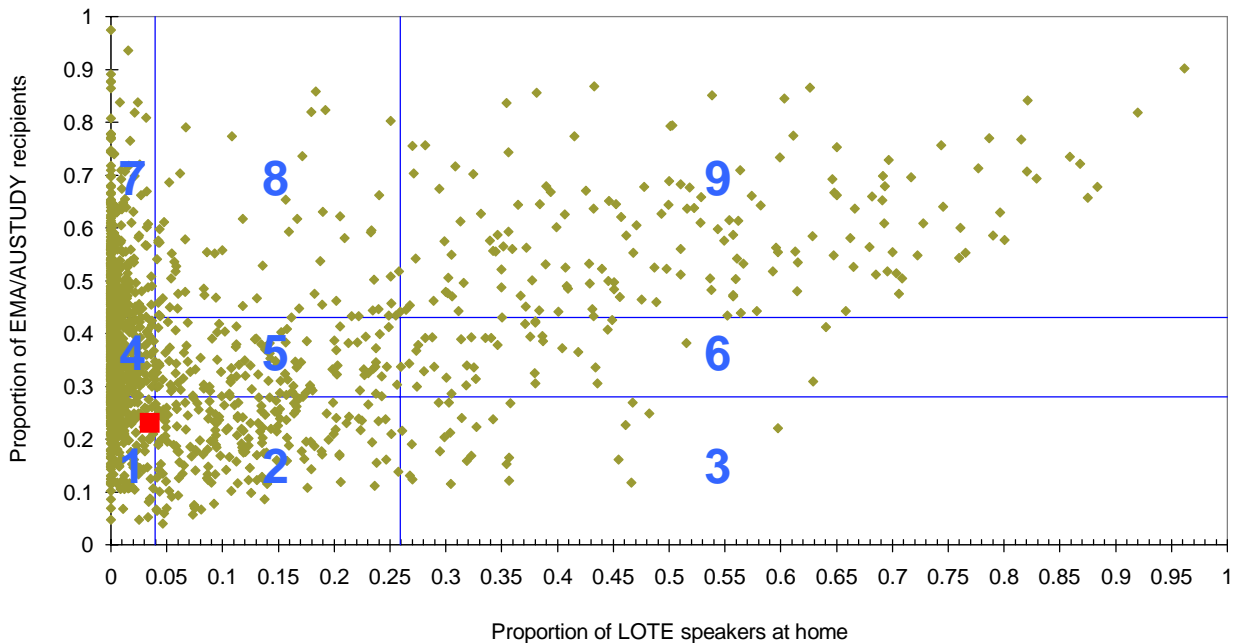
School name: Berwick Secondary College

Explanation: The first chart below plots the Like School Group position of all government schools offering Prep - Year 10. The second chart plots the Like School Group position of all government schools providing VCE. This school is shown as the red square on the relevant chart/s.

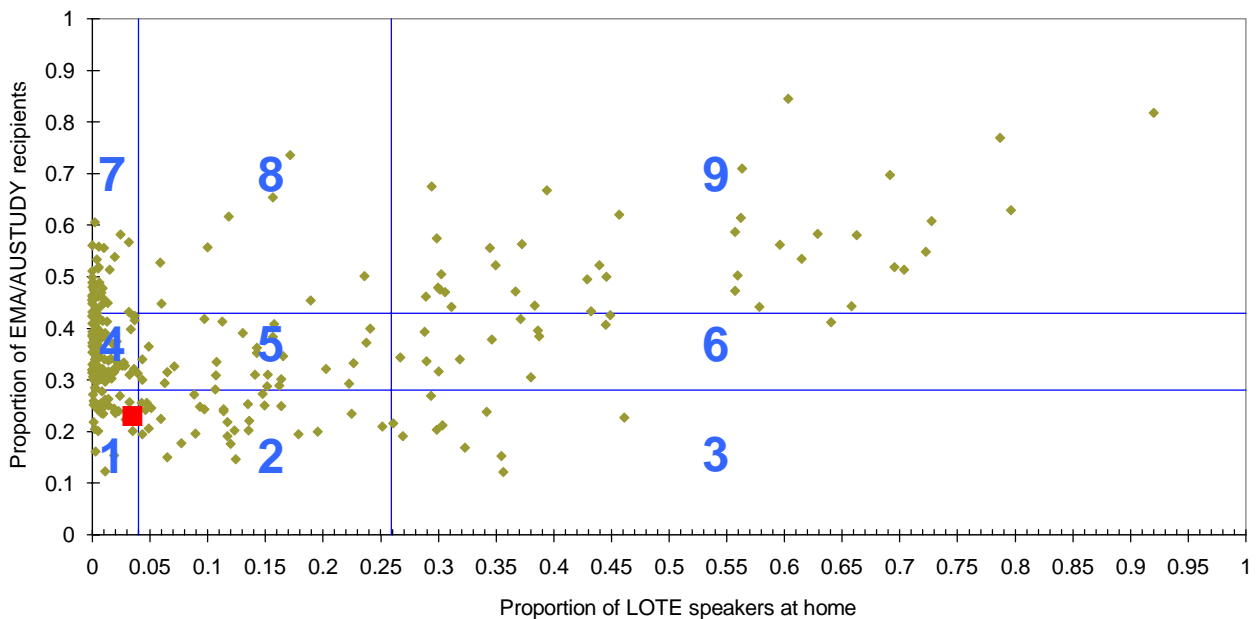
Note: EMA/AUSTUDY and LOTE proportions were not collected from 2004. 2003 proportions, and resulting LSGs, are therefore used from 2004.

	1999	2000	2001	2002	2003	2004	2005	2006
LSG:	4	1	1	1	1	1	1	1
EMA (3 year average):		0.262	0.252	0.240	0.230	0.230	0.230	0.230
LOTE (3 year average):		0.027	0.031	0.032	0.035	0.035	0.035	0.035

Like School Groups 2006, school plotted against Prep - Year 10 schools



Like School Groups 2006, school plotted against VCE providers



Teacher Assessments against the VELS / CSF - Year levels 8, 10 combined

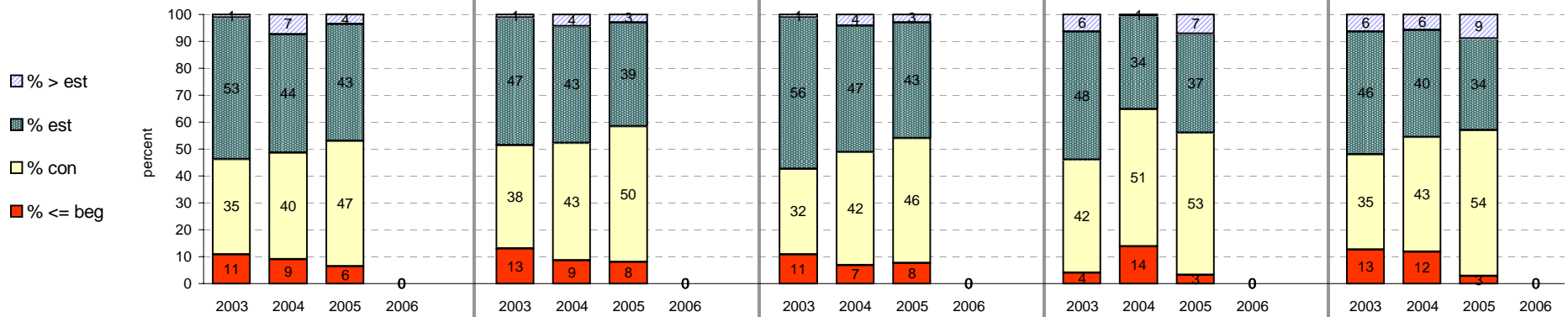
School no: 7603

School name: Berwick Secondary College

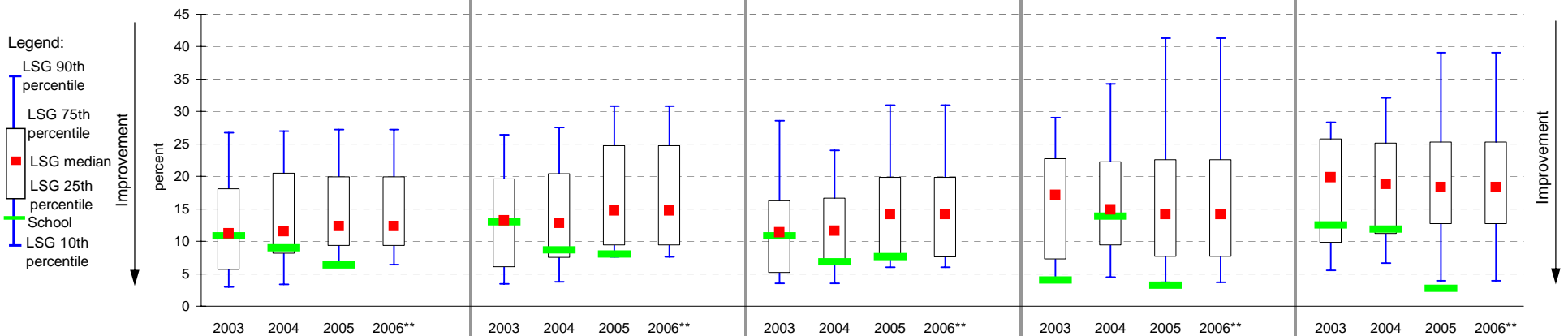
Source of data: Data retrieved electronically from CASES21 at time of rollover.

Explanation: Teacher assessments of student progress against the VELS / CSF.

		Reading					Writing					Speaking and Listening					Measurement, Chance & Data*					Structure*				
		total students	% > est	% est	% con	% <= beg	total students	% > est	% est	% con	% <= beg	total students	% > est	% est	% con	% <= beg	total students	% > est	% est	% con	% <= beg	total students	% > est	% est	% con	% <= beg
Yrs: 8, 10 (combined)	2003	563	1	53	35	11	564	1	47	38	13	564	1	56	32	11	569	6	48	42	4	567	6	46	35	13
	2004	589	7	44	40	9	589	4	43	43	9	589	4	47	42	7	592	1	34	51	14	592	6	40	43	12
	2005	473	4	43	47	6	473	3	39	50	8	473	3	43	46	8	473	7	37	53	3	473	9	34	54	3
	2006																									



Percentage beginning or lower than expected level, compared to LSG benchmarks**



Notes: > est: better than established at expected level; est: established at expected level; con: consolidating at expected level; <= beg: beginning or lower than expected level

* pre-2006, the corresponding CSF strand for VELS Measurement, Chance and Data was Chance and Data. The corresponding CSF strand for VELS Structure was Algebra.

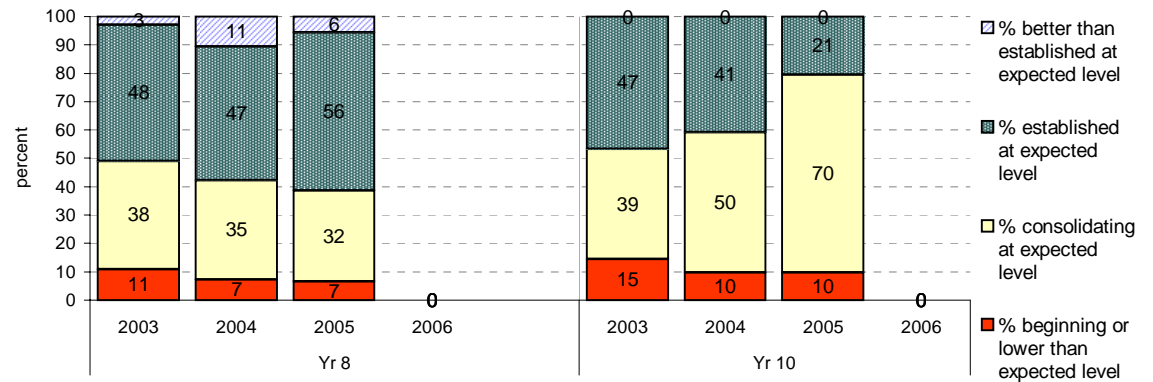
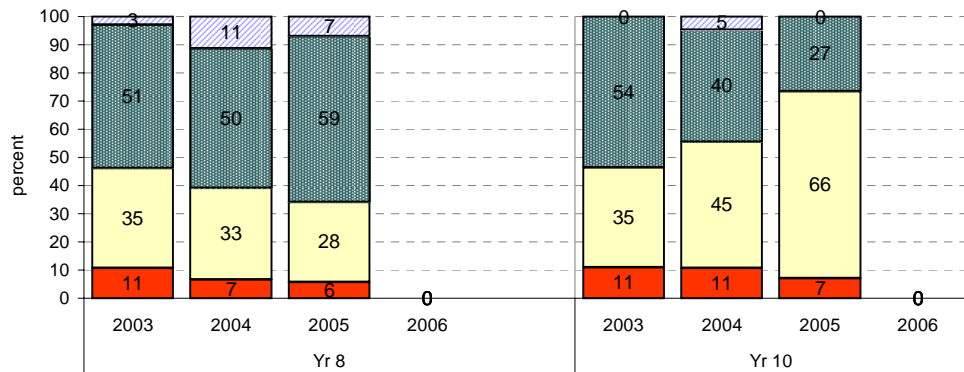
** In 2006, a subset of schools assessed students against the VELS using Beginning, Consolidating, Established. 2005 benchmarks are therefore shown for 2006.

Teacher Assessments against the VELS / CSF - English (secondary)

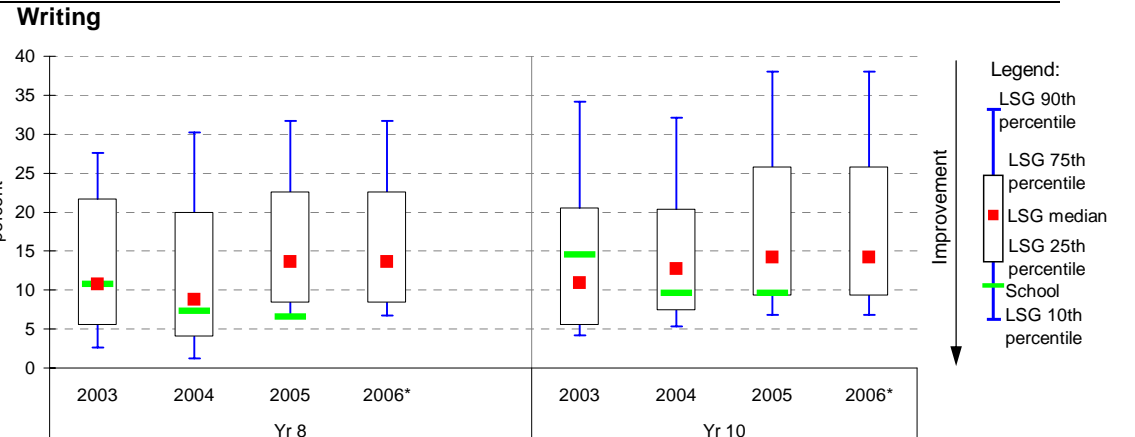
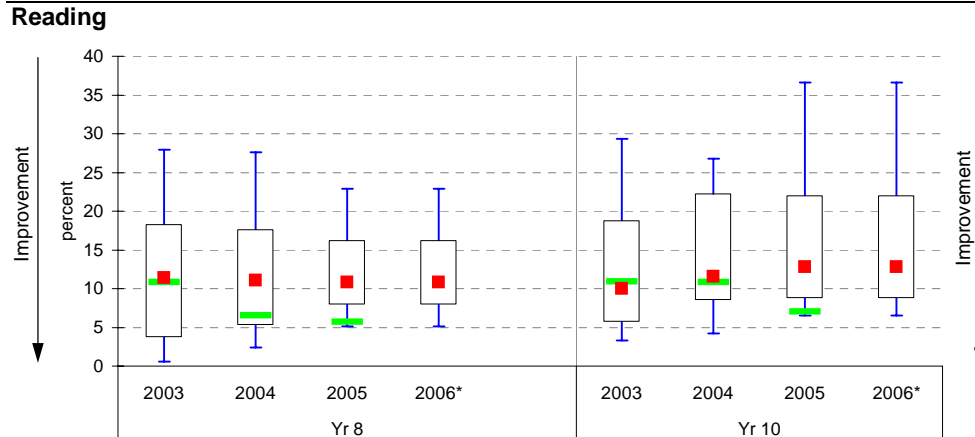
School no: 7603
School name: Berwick Secondary College
Source of data: Data retrieved electronically from CASES21 at time of rollover.
Explanation: Teacher assessments of student progress against the VELS / CSF.

		total students	% better than established at expected level		% consolidating at expected level		% beginning or lower than expected level		Benchmarks* (means)	
			at expected level	at expected level	at expected level	at expected level	mean	LSG	State	
Yr 8	2003	241	3	51	35	11	4.82	4.86	4.80	
	2004	246	11	50	33	7	4.90	4.85	4.81	
	2005	244	7	59	28	6	4.89	4.80	4.80	
	2006							4.80	4.80	
Yr 10	2003	322	0	54	35	11	5.77	5.82	5.76	
	2004	343	5	40	45	11	5.80	5.84	5.79	
	2005	229	0	27	66	7	5.73	5.77	5.77	
	2006							5.77	5.77	

		total students	% better than established at expected level		% consolidating at expected level		% beginning or lower than expected level		Benchmarks* (means)	
			at expected level	at expected level	at expected level	at expected level	mean	LSG	State	
Yr 8	2003	241	3	48	38	11	4.81	4.84	4.77	
	2004	246	11	47	35	7	4.87	4.83	4.78	
	2005	244	6	56	32	7	4.87	4.78	4.78	
	2006							4.78	4.78	
Yr 10	2003	323	0	47	39	15	5.69	5.80	5.75	
	2004	343	0	41	50	10	5.75	5.82	5.77	
	2005	229	0	21	70	10	5.70	5.75	5.75	
	2006							5.75	5.75	



Percentage beginning or lower than expected level, compared to LSG benchmarks*



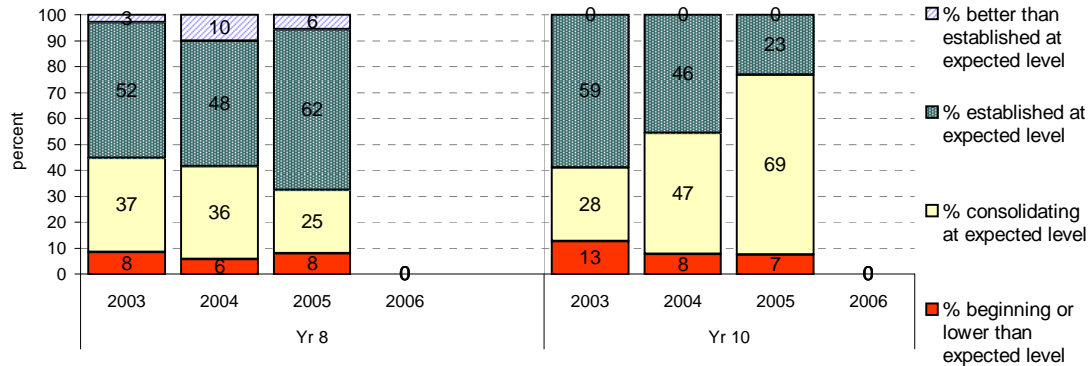
* Note: In 2006, a subset of schools assessed students against the VELS using Beginning, Consolidating, Established. 2005 benchmarks are therefore shown for 2006.

Teacher Assessments against the VELS / CSF - English (secondary)

School no: 7603
School name: Berwick Secondary College
Source of data: Data retrieved electronically from CASES21 at time of rollover.
Explanation: Teacher assessments of student progress against the VELS / CSF.

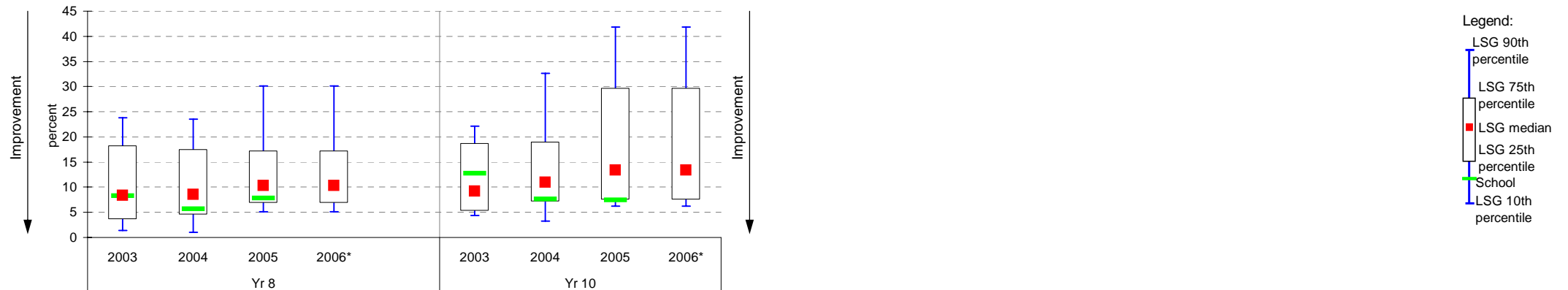
Speaking and Listening

	Year	total students	% better than established at expected level		% consolidating at expected level		% beginning or lower than expected level		Benchmarks* (means)	
			at expected level	at expected level	at expected level	at expected level	mean	LSG	State	
Yr 8	2003	241	3	52	37	8	4.83	4.86	4.80	
	2004	246	10	48	36	6	4.87	4.85	4.82	
	2005	244	6	62	25	8	4.90	4.81	4.81	
	2006							4.81	4.81	
Yr 10	2003	323	0	59	28	13	5.79	5.82	5.77	
	2004	343	0	46	47	8	5.79	5.84	5.79	
	2005	229	0	23	69	7	5.72	5.71	5.77	
	2006							5.71	5.77	



Percentage beginning or lower than expected level, compared to LSG benchmarks*

Speaking and Listening



* Note: In 2006, a subset of schools assessed students against the VELS using Beginning, Consolidating, Established. 2005 benchmarks are therefore shown for 2006.

Teacher Assessments against the VELS / CSF - Mathematics (secondary)

School no: 7603

School name: Berwick Secondary College

Source of data: Data retrieved electronically from CASES21 at time of rollover.

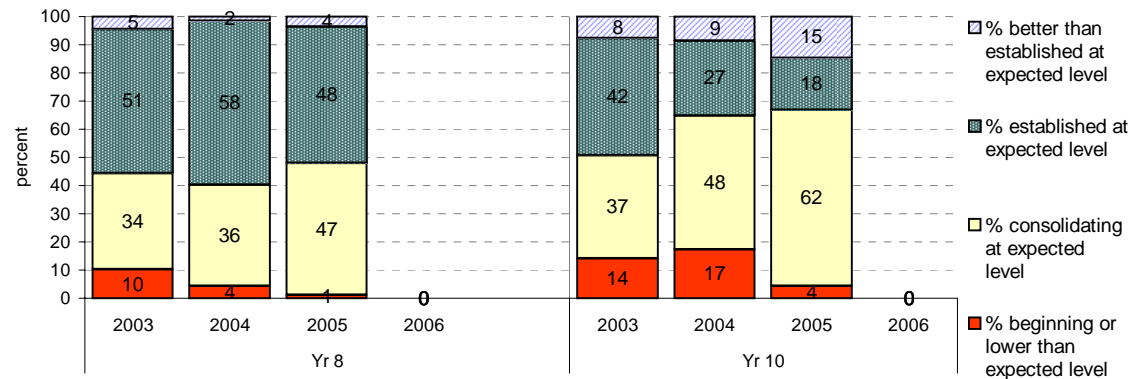
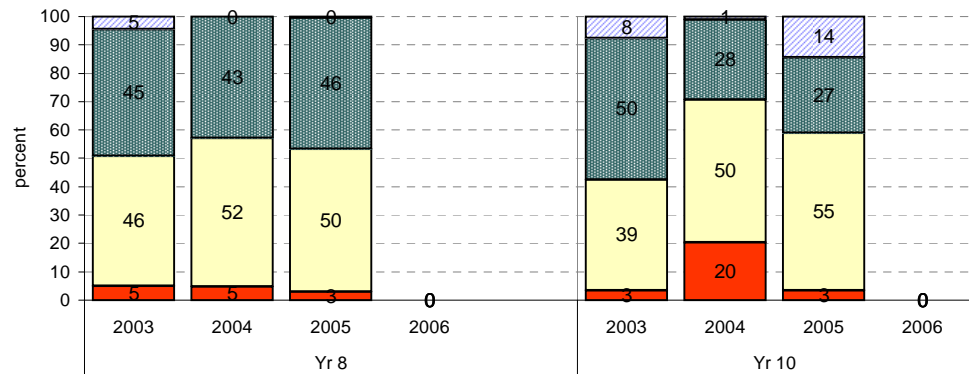
Explanation: Teacher assessments of student progress against the VELS / CSF.

Measurement, Chance and Data (pre-2006, the corresponding CSF strand was Chance and Data)

	Year	total students	% better than established at expected level		% consolidating at expected level		% beginning or lower than expected level		Benchmarks* (means)		
			at expected level	at expected level	at expected level	at expected level	mean	LSG	State		
Yr 8	2003	244	5	45	46	5	4.84	4.80	4.78		
	2004	249	0	43	52	5	4.80	4.82	4.78		
	2005	244	0	46	50	3	4.81	4.75	4.77		
	2006						4.75	4.77			
Yr 10	2003	325	8	50	39	3	5.89	5.74	5.73		
	2004	343	1	28	50	20	5.63	5.73	5.73		
	2005	229	14	27	55	3	5.89	5.75	5.74		
	2006						5.75	5.74			

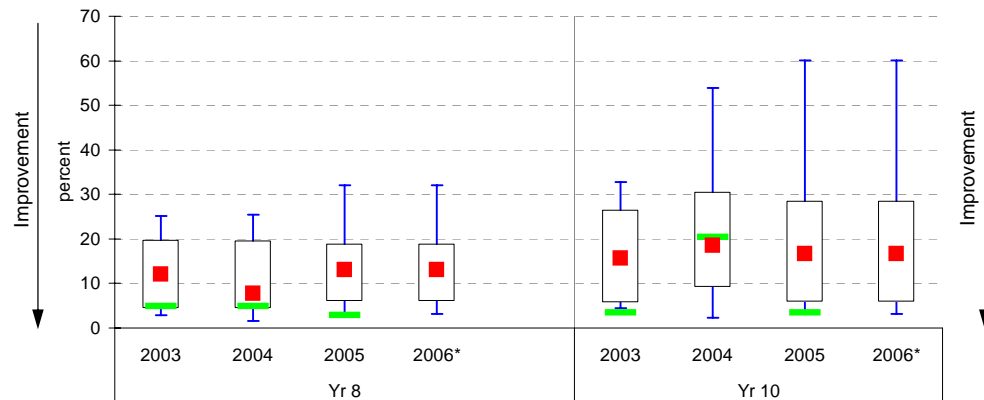
Structure (pre-2006, the corresponding CSF strand was Algebra)

	Year	total students	% better than established at expected level		% consolidating at expected level		% beginning or lower than expected level		Benchmarks* (means)		
			at expected level	at expected level	at expected level	at expected level	mean	LSG	State		
Yr 8	2003	242	5	51	34	10	4.85	4.80	4.77		
	2004	249	2	58	36	4	4.86	4.82	4.79		
	2005	244	4	48	47	1	4.85	4.75	4.78		
	2006						4.75	4.78			
Yr 10	2003	325	8	42	37	14	5.82	5.71	5.71		
	2004	343	9	27	48	17	5.71	5.71	5.71		
	2005	229	15	18	62	4	5.85	5.72	5.72		
	2006						5.72	5.72			

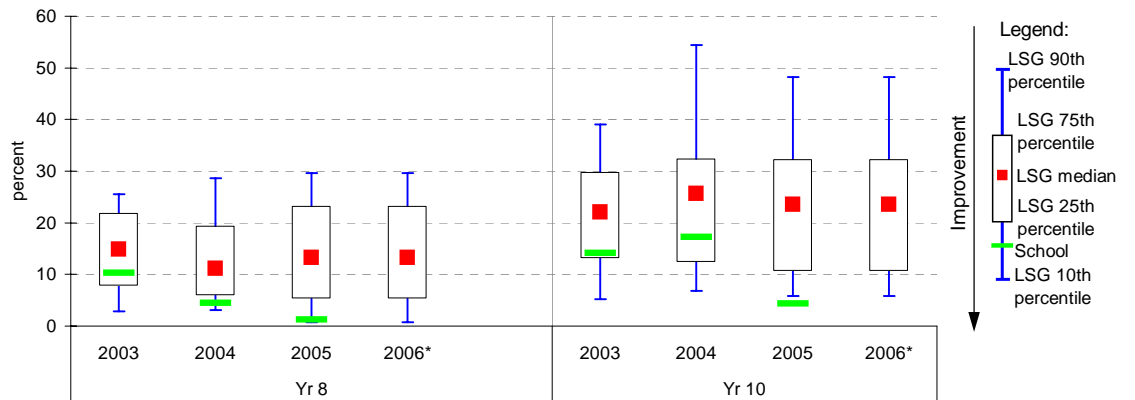


Percentage beginning or lower than expected level, compared to LSG benchmarks*

Measurement, Chance and Data (pre-2006, the corresponding CSF strand was Chance and Data)



Structure (pre-2006, the corresponding CSF strand was Algebra)



* Note: In 2006, a subset of schools assessed students against the VELS using Beginning, Consolidating, Established. 2005 benchmarks are therefore shown for 2006.

Teacher Assessments against the VELS / CSF - English (secondary)

School no: 7603
School name: Berwick Secondary College
Source of data: Data retrieved electronically from CASES21 at time of rollover.
Explanation: Teacher assessments of student progress against the VELS / CSF.

LSG History	
2003	1
2004	1
2005	1
2006	1

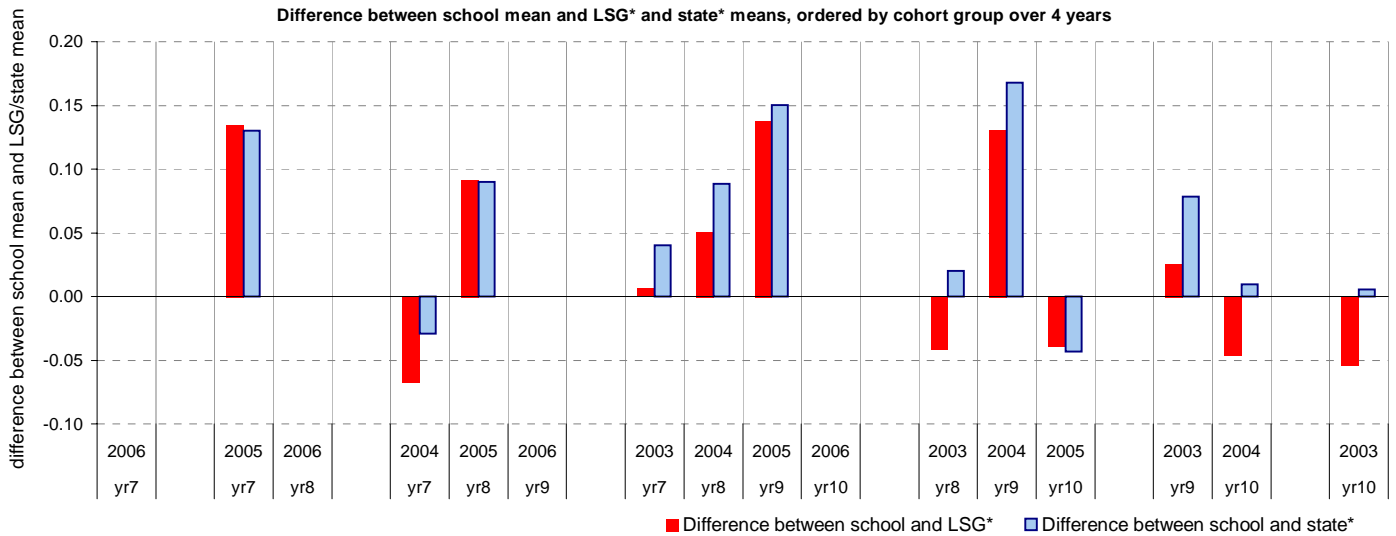
Reading

Year Level	Year	Total (1)	Assessed (2)	Level 1			Level 2			Level 3			Level 4			Level 5			Level 6			Level 6E			School mean	Benchmark* means		Diff. between school and ...	
				B	C	E	B	C	E	B	C	E	B	C	E	B	C	E	B	C	E	B	C	E		LSG	State	LSG	State
yr7	2006																							4.50	4.50				
yr7	2005	255	255				1			1	5	3	6	4	14	157	64							4.63	4.50	4.50	0.13	0.13	
yr8	2006																							4.80	4.80				
yr7	2004	240	240				1			2	7	10	11		30	163	16							4.46	4.52	4.49	-0.07	-0.03	
yr8	2005	244	244												14	69	144	16	1					4.89	4.80	4.80	0.09	0.09	
yr9	2006																							5.45	5.44				
yr7	2003	244	244						4	1	5	11	2	53	132	36								4.53	4.52	4.49	0.01	0.04	
yr8	2004	246	246								2	3		11	80	122	9	19						4.90	4.85	4.81	0.05	0.09	
yr9	2005	246	246										1		3	2	72	136	32					5.59	5.45	5.44	0.14	0.15	
yr10	2006																							5.77	5.77				
yr8	2003	241	241									2		24	85	123	7							4.82	4.86	4.80	-0.04	0.02	
yr9	2004	242	242					1			1			8	9	6	39	99	79					5.61	5.47	5.44	0.13	0.17	
yr10	2005	229	229												1	2	13	152	61					5.73	5.77	5.77	-0.04	-0.04	
yr9	2003	329	329								1			4	9	8	87	208	12					5.53	5.50	5.45	0.03	0.08	
yr10	2004	343	343											4	1		32	153	137	16				5.80	5.84	5.79	-0.05	0.01	
yr10	2003	322	322											9	3	6	17	114	173					5.77	5.82	5.76	-0.05	0.01	

shading indicates, for even numbered year levels, consolidating or established at the expected VELS / CSF level, and, for the odd numbered year levels, beginning or consolidating at the expected VELS / CSF level, plus established at the level below.

- (1) Students in group
- (2) Total assessed

* Note: In 2006, a subset of schools assessed students against the VELS using Beginning, Consolidating, Established. 2005 benchmarks are therefore shown for 2006.



Teacher Assessments against the VELS / CSF - English (secondary)

School no: 7603
School name: Berwick Secondary College
Source of data: Data retrieved electronically from CASES21 at time of rollover.
Explanation: Teacher assessments of student progress against the VELS / CSF.

LSG History	
2003	1
2004	1
2005	1
2006	1

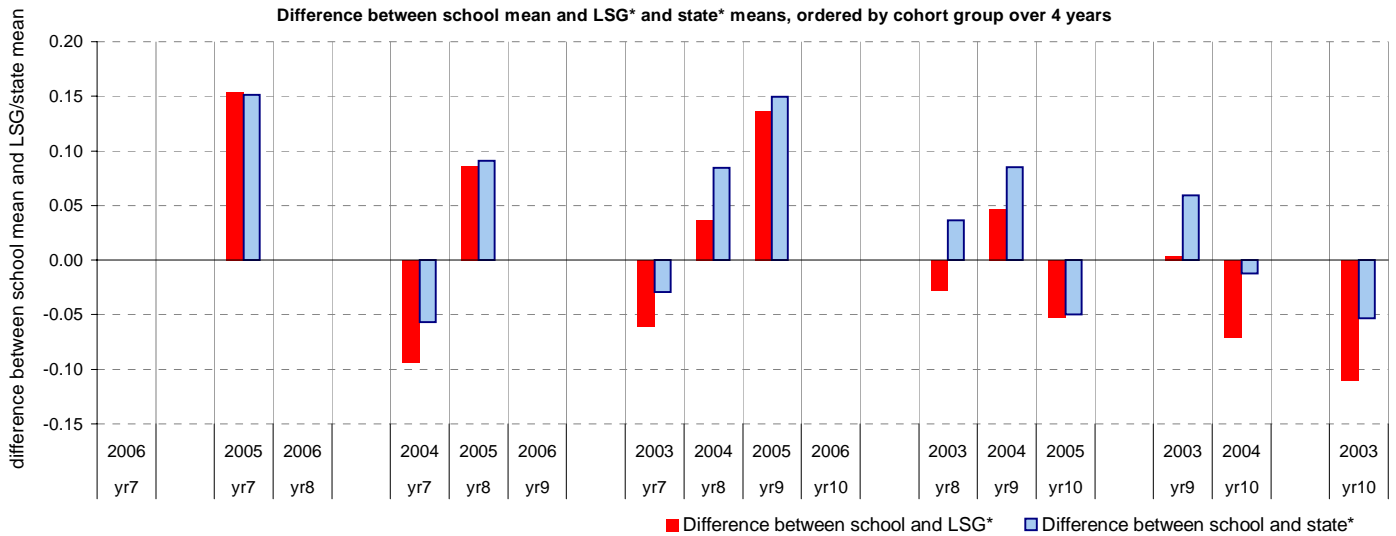
Writing

Year Level	Year	Total (1)	Assessed (2)	Level 1			Level 2			Level 3			Level 4			Level 5			Level 6			Level 6E			School mean	Benchmark* means		Diff. between school and ...	
				B	C	E	B	C	E	B	C	E	B	C	E	B	C	E	B	C	E	B	C	E		LSG	State	LSG	State
yr7	2006																							4.47	4.48				
yr7	2005	255	255				1			2	4	3	6	4	13	160	62							4.63	4.47	4.48	0.15	0.15	
yr8	2006																							4.78	4.78				
yr7	2004	240	240						2	6	13	18		40	153	8							4.41	4.50	4.46	-0.09	-0.06		
yr8	2005	244	244											16	78	136	13	1					4.87	4.78	4.78	0.09	0.09		
yr9	2006																						5.43	5.42					
yr7	2003	244	244					1	3	2	14	12	5	52	141	14							4.43	4.49	4.46	-0.06	-0.03		
yr8	2004	246	246								3	3		12	86	116	13	13					4.87	4.83	4.78	0.04	0.08		
yr9	2005	246	246									1	1		3	79	140	22					5.57	5.43	5.42	0.14	0.15		
yr10	2006																						5.75	5.75					
yr8	2003	241	241									2	24	92	116	7							4.81	4.84	4.77	-0.03	0.04		
yr9	2004	242	242					1			1	1	10	16	12	42	105	55					5.51	5.47	5.43	0.05	0.09		
yr10	2005	229	229											1	3	18	160	47					5.70	5.75	5.75	-0.05	-0.05		
yr9	2003	329	329								1	1	6	4	12	111	185	9					5.49	5.49	5.43	0.00	0.06		
yr10	2004	343	343									1	3	1	2	26	170	140					5.75	5.82	5.77	-0.07	-0.01		
yr10	2003	323	323								1	20	5	5	16	125	151						5.69	5.80	5.75	-0.11	-0.05		

shading indicates, for even numbered year levels, consolidating or established at the expected VELS / CSF level, and, for the odd numbered year levels, beginning or consolidating at the expected VELS / CSF level, plus established at the level below.

- (1) Students in group
- (2) Total assessed

* Note: In 2006, a subset of schools assessed students against the VELS using Beginning, Consolidating, Established. 2005 benchmarks are therefore shown for 2006.



Teacher Assessments against the VELS / CSF - English (secondary)

School no: 7603
School name: Berwick Secondary College
Source of data: Data retrieved electronically from CASES21 at time of rollover.
Explanation: Teacher assessments of student progress against the VELS / CSF.

LSG History	
2003	1
2004	1
2005	1
2006	1

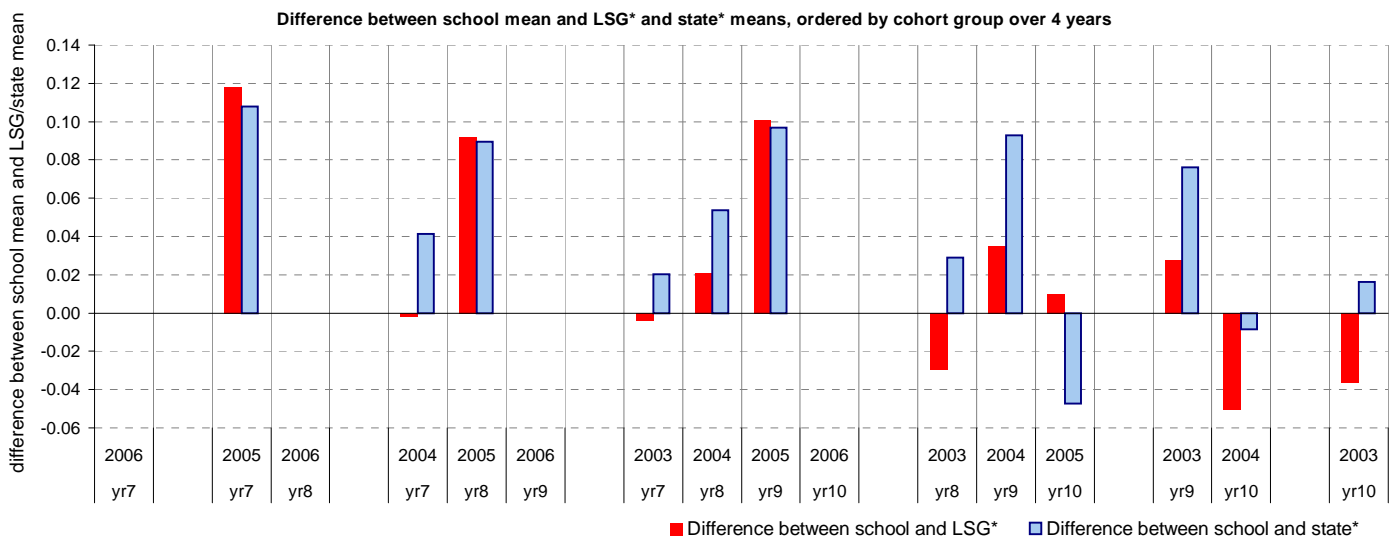
Speaking and Listening

Year Level	Year	Total (1)	Assessed (2)	Level 1			Level 2			Level 3			Level 4			Level 5			Level 6			Level 6E			School mean	Benchmark* means		Diff. between school and ...	
				B	C	E	B	C	E	B	C	E	B	C	E	B	C	E	B	C	E	B	C	E		LSG	State	LSG	State
yr7	2006																						4.51	4.52					
yr7	2005	255	255				1			1	5	3	6	4	13	164	58						4.62	4.51	4.52	0.12	0.11		
yr8	2006																						4.81	4.81					
yr7	2004	240	240						1	2	5	15	1	25	169	22							4.55	4.55	4.50	0.00	0.04		
yr8	2005	244	244											19	60	151	9	1	4				4.90	4.81	4.81	0.09	0.09		
yr9	2006																						5.45	5.45					
yr7	2003	244	244								2	14	3	66	145	14							4.52	4.52	4.50	0.00	0.02		
yr8	2004	246	246							2	2			10	88	119	21	4				4.87	4.85	4.82	0.02	0.05			
yr9	2005	246	246											1	2	2	99	118	24			5.55	5.45	5.45	0.10	0.10			
yr10	2006																					5.71	5.77						
yr8	2003	241	241									1	19	88	126	7						4.83	4.86	4.80	-0.03	0.03			
yr9	2004	242	242					1						3	5	17	68	96	52			5.55	5.52	5.46	0.03	0.09			
yr10	2005	229	229														17	159	53			5.72	5.71	5.77	0.01	-0.05			
yr9	2003	329	329									1	2	5	7	100	213	1				5.52	5.50	5.45	0.03	0.08			
yr10	2004	343	343											2	1	2	21	160	157			5.79	5.84	5.79	-0.05	-0.01			
yr10	2003	323	323										7	11	23	91	191					5.79	5.82	5.77	-0.04	0.02			

shading indicates, for even numbered year levels, consolidating or established at the expected VELS / CSF level, and, for the odd numbered year levels, beginning or consolidating at the expected VELS / CSF level, plus established at the level below.

- (1) Students in group
- (2) Total assessed

* Note: In 2006, a subset of schools assessed students against the VELS using Beginning, Consolidating, Established. 2005 benchmarks are therefore shown for 2006.



Teacher Assessments against the VELS / CSF - Mathematics (secondary)

School no: 7603
School name: Berwick Secondary College
Source of data: Data retrieved electronically from CASES21 at time of rollover.
Explanation: Teacher assessments of student progress against the VELS / CSF.

LSG History	
2003	1
2004	1
2005	1
2006	1

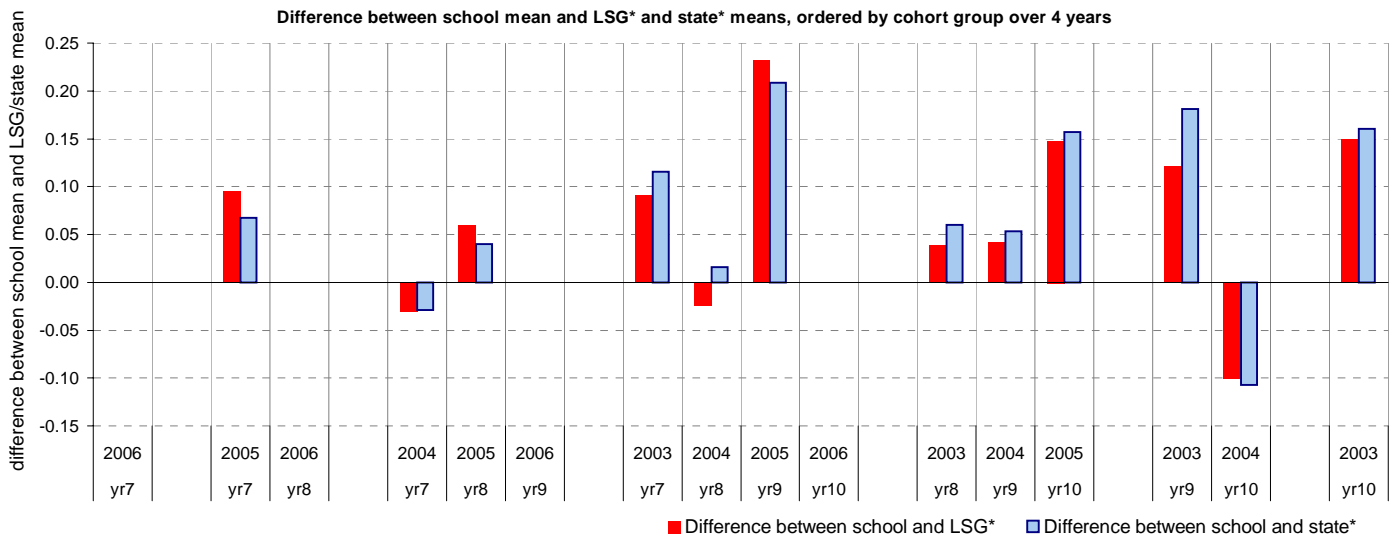
Measurement, Chance and Data (pre-2006, the corresponding CSF strand was Chance and Data)

Year Level	Year	Total (1)	Assessed (2)	Level 1			Level 2			Level 3			Level 4			Level 5			Level 6			Level 6E			School mean	Benchmark* means		Diff. between school and ...	
				B	C	E	B	C	E	B	C	E	B	C	E	B	C	E	B	C	E	B	C	E		LSG	State	LSG	State
																												LSG	State
yr7	2006																							4.48	4.50				
yr7	2005	254	254							1			4	14	4		5	225	1					4.57	4.48	4.50	0.09	0.07	
yr8	2006																							4.75	4.77				
yr7	2004	241	241									3	10	4		104	115	5					4.46	4.49	4.49	-0.03	-0.03		
yr8	2005	244	244									1	1		5	123	113			1			4.81	4.75	4.77	0.06	0.04		
yr9	2006																						5.41	5.44					
yr7	2003	244	244									1	2		71	139	29		2				4.61	4.52	4.49	0.09	0.12		
yr8	2004	249	249												12	130	107						4.80	4.82	4.78	-0.02	0.02		
yr9	2005	246	246																37	190	19		5.64	5.41	5.44	0.23	0.21		
yr10	2006																						5.75	5.74					
yr8	2003	244	244							1			2		9	112	109		11				4.84	4.80	4.78	0.04	0.06		
yr9	2004	243	243												4	16	2		63	149	9		5.50	5.46	5.45	0.04	0.05		
yr10	2005	229	229																8	127	61	8	14	11	5.89	5.75	5.74	0.15	0.16
yr9	2003	349	349							1					2	3			31	296	16		5.63	5.51	5.45	0.12	0.18		
yr10	2004	343	343												41	1			28	172	97	2	2	5.63	5.73	5.73	-0.10	-0.11	
yr10	2003	325	325												1	3			7	127	162	24	1	5.89	5.74	5.73	0.15	0.16	

shading indicates, for even numbered year levels, consolidating or established at the expected VELS / CSF level, and, for the odd numbered year levels, beginning or consolidating at the expected VELS / CSF level, plus established at the level below.

- (1) Students in group
- (2) Total assessed

* Note: In 2006, a subset of schools assessed students against the VELS using Beginning, Consolidating, Established. 2005 benchmarks are therefore shown for 2006.



Teacher Assessments against the VELS / CSF - Mathematics (secondary)

School no: 7603
School name: Berwick Secondary College
Source of data: Data retrieved electronically from CASES21 at time of rollover.
Explanation: Teacher assessments of student progress against the VELS / CSF.

LSG History	
2003	1
2004	1
2005	1
2006	1

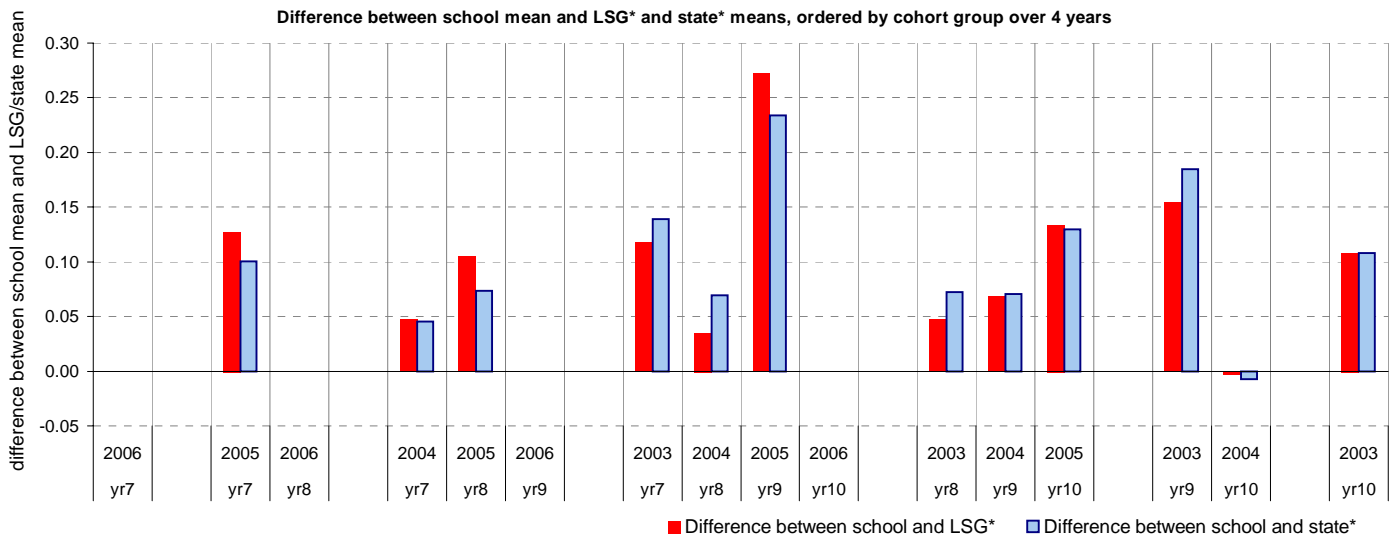
Structure (pre-2006, the corresponding CSF strand was Algebra)

Year Level	Year	Total (1)	Assessed (2)	Level 1			Level 2			Level 3			Level 4			Level 5			Level 6			Level 6E			School mean	Benchmark* means		Diff. between school and ...	
				B	C	E	B	C	E	B	C	E	B	C	E	B	C	E	B	C	E	B	C	E		LSG	State	LSG	State
																												LSG	State
yr7	2006																							4.50	4.53				
yr7	2005	255	255									10	20	216	9									4.63	4.50	4.53	0.13	0.10	
yr8	2006																							4.75	4.78				
yr7	2004	241	241									2	79	150	10									4.57	4.52	4.52	0.05	0.05	
yr8	2005	244	244									3	114	118		8	1							4.85	4.75	4.78	0.11	0.07	
yr9	2006																							5.40	5.44				
yr7	2003	244	244									2	25	197	20									4.66	4.54	4.52	0.12	0.14	
yr8	2004	249	249										11	89	145		4							4.86	4.82	4.79	0.04	0.07	
yr9	2005	246	246													23	201	19	3					5.67	5.40	5.44	0.27	0.23	
yr10	2006																							5.72	5.72				
yr8	2003	242	242								2	23	82	124			11							4.85	4.80	4.77	0.05	0.07	
yr9	2004	243	243									4	16	1	61	153	8							5.50	5.44	5.43	0.07	0.07	
yr10	2005	229	229													10	143	42	16	12	6			5.85	5.72	5.72	0.13	0.13	
yr9	2003	348	348													11	2		35	272	28			5.61	5.46	5.43	0.15	0.18	
yr10	2004	343	343													42	3	14	163	91	5	15	10	5.71	5.71	5.71	0.00	-0.01	
yr10	2003	325	325													2	5	39	119	135	4	16	5	5.82	5.71	5.71	0.11	0.11	

shading indicates, for even numbered year levels, consolidating or established at the expected VELS / CSF level, and, for the odd numbered year levels, beginning or consolidating at the expected VELS / CSF level, plus established at the level below.

- (1) Students in group
- (2) Total assessed

* Note: In 2006, a subset of schools assessed students against the VELS using Beginning, Consolidating, Established. 2005 benchmarks are therefore shown for 2006.



AIM Year 7 & 9: Reading ¹

School no: 7603

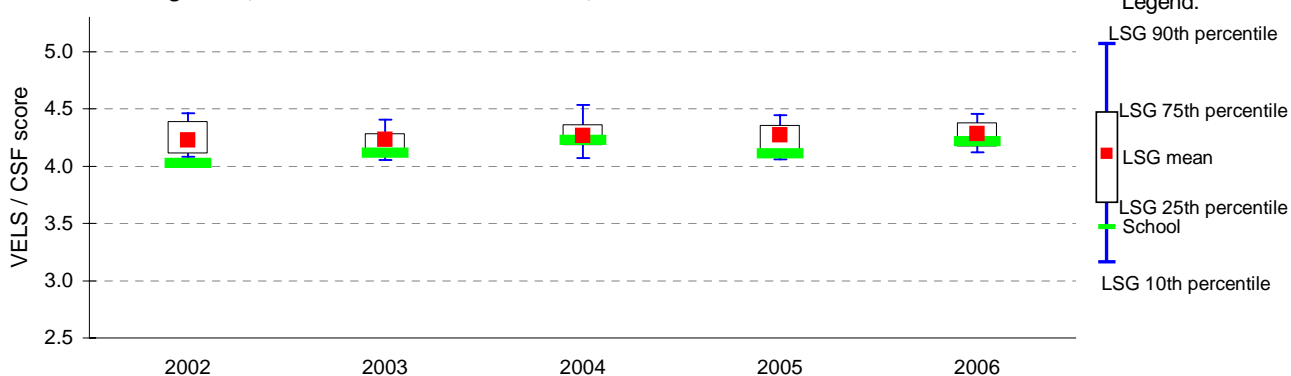
School name: Berwick Secondary College

Explanation: The Achievement Improvement Monitor (AIM) is a statewide assessment program conducted each year for students in Years 3, 5, 7 and 9.

Source of data: Victorian Curriculum and Assessment Authority.

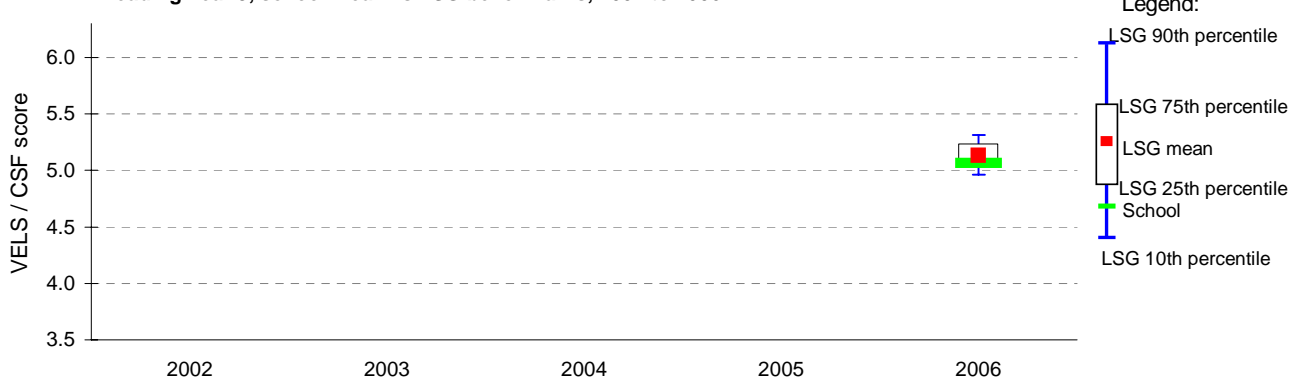
Year 7 ⁴	School							LSG					State
	student participation ² (%)	students participated (n)	VELS / CSF				mean	10th ptile*	25th ptile*	75th mean#	90th ptile*	mean#	
			Level 3 (n)	Level 3 (%)	Level 6/6E (n)	Level 6/6E (%)							
2002	95	224	17	8	31	14	4.0	4.1	4.1	4.2	4.4	4.5	4.1
2003	86	212	16	8	40	19	4.1	4.1	4.1	4.2	4.3	4.4	4.1
2004	94	221	11	5	49	22	4.2	4.1	4.2	4.3	4.4	4.5	4.2
2005	93	239	15	6	29	12	4.1	4.1	4.1	4.3	4.4	4.4	4.2
2006	94	257	6	2	42	16	4.2	4.1	4.2	4.3	4.4	4.5	4.2

AIM Reading Year 7, school mean vs LSG benchmarks, 2002 to 2006



Year 9 ⁵	School							LSG					State
	student participation ² (%)	students participated (n)	VELS / CSF				mean	10th ptile*	25th ptile*	75th mean#	90th ptile*	mean#	
			Level 4 (n)	Level 4 (%)	Level 6E (n)	Level 6E (%)							
2006	93	228					5.1	5.0	5.1	5.1	5.2	5.3	5.1

AIM Reading Year 9, school mean vs LSG benchmarks, 2002 to 2006



Year 7 / Year 9 matched cohort ³	Yr 9 students participated (n)	Students in matched cohort (n)	Matched cohort (%)	Average growth (VELS / CSF units)	
				Complete school	Matched cohort
Yr7 2004 / Yr9 2006	228	168	74%	0.8	0.9

Notes: * distribution of school means
mean score of students

¹ for more detailed AIM data, refer to your school's 2006 AIM Data Service website at <http://aimds.vcaa.vic.edu.au>.

² % student participation = (students who participated in AIM / Feb enrolments) * 100

³ students who participated in AIM at the same school in Years 7 and 9 are called the matched cohort

⁴ Year 7 data for 2004 and 2005 includes test results from AIM online

⁵ AIM Year 9 was introduced in 2006. The percentage of secondary and pri/sec schools with Year 9 students that participated in 2006 AIM was: 77%

AIM Year 7 & 9: Mathematics ¹

School no: 7603

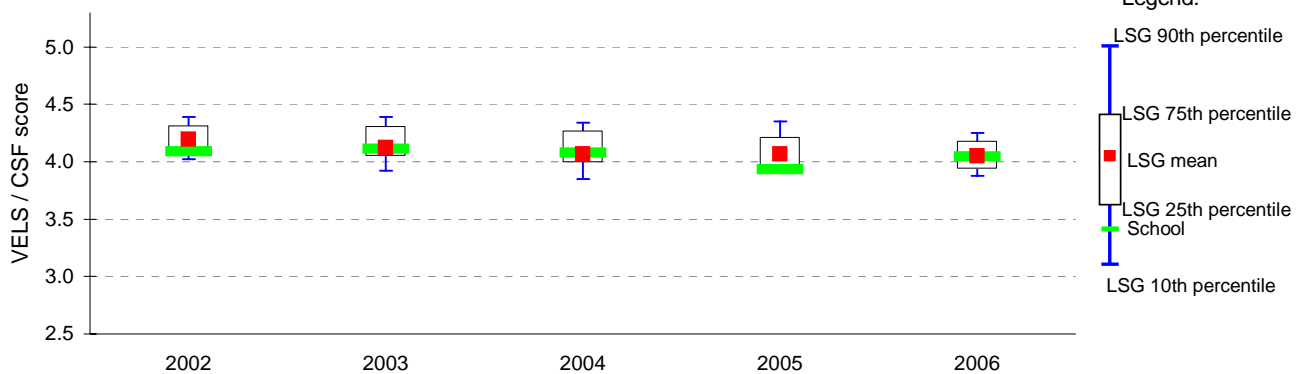
School name: Berwick Secondary College

Explanation: The Achievement Improvement Monitor (AIM) is a statewide assessment program conducted each year for students in Years 3, 5, 7 and 9.

Source of data: Victorian Curriculum and Assessment Authority.

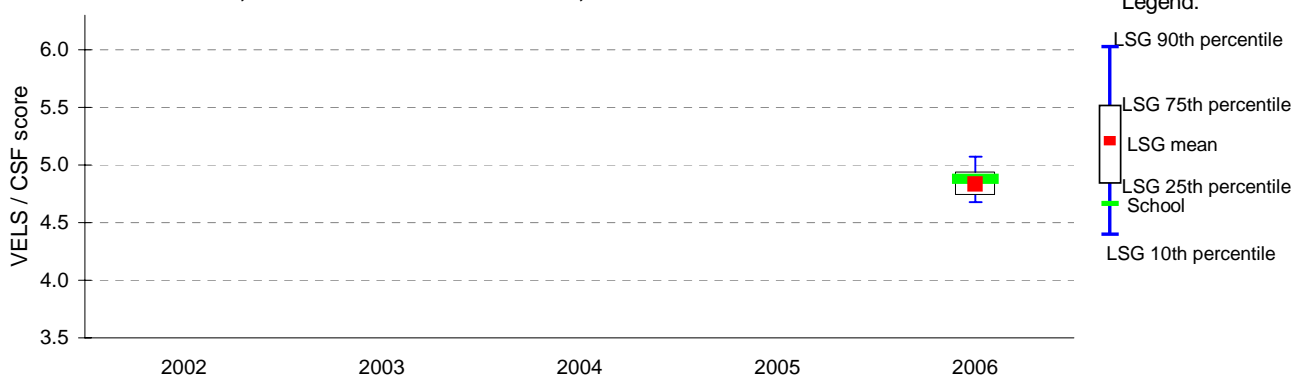
Year	School		VELS / CSF						LSG				State
	student participation ²	students participated	Level 3		Level 6/6E		mean	10th ptile*	25th ptile*	75th mean#	90th ptile*	mean#	
	(%)	(n)	(n)	(%)	(n)	(%)							
2002	94	223	9	4	16	7	4.1	4.0	4.1	4.2	4.3	4.4	4.1
2003	83	205	15	7	21	10	4.1	3.9	4.0	4.1	4.3	4.4	4.0
2004	92	216	9	4	24	11	4.1	3.9	4.0	4.1	4.3	4.3	4.0
2005	94	242	20	8	16	7	3.9	3.9	4.0	4.1	4.2	4.4	4.0
2006	92	251	11	4	11	4	4.0	3.9	3.9	4.1	4.2	4.3	4.0

AIM Maths Year 7, school mean vs LSG benchmarks, 2002 to 2006



Year	School		VELS / CSF						LSG				State
	student participation ²	students participated	Level 4		Level 6E		mean	10th ptile*	25th ptile*	75th mean#	90th ptile*	mean#	
	(%)	(n)	(n)	(%)	(n)	(%)							
2006	91	221					4.9	4.7	4.7	4.8	4.9	5.1	4.8

AIM Maths Year 9, school mean vs LSG benchmarks, 2002 to 2006



Year 7 / Year 9 matched cohort ³	Yr 9 students participated (n)	Students in matched cohort (n)	Matched cohort (%)	Average growth (VELS / CSF units)	
				Complete school	Matched cohort
Yr7 2004 / Yr9 2006	221	159	72%	0.8	0.8

Notes: * distribution of school means
mean score of students

¹ for more detailed AIM data, refer to your school's 2006 AIM Data Service website at <http://aimds.vcaa.vic.edu.au>.

² % student participation = (students who participated in AIM / Feb enrolments) * 100

³ students who participated in AIM at the same school in Years 7 and 9 are called the matched cohort

⁴ Year 7 data for 2004 and 2005 includes test results from AIM online

⁵ AIM Year 9 was introduced in 2006. The percentage of secondary and pri/sec schools with Year 9 students that participated in 2006 AIM was: 77%

VCE

School no: 7603
School name: Berwick Secondary College
Explanation: Only 2006 studies, which at least 1 student completed, are included.
Source of data: Victorian Curriculum and Assessment Authority.

Notes:	2002 LSG=1		2003 LSG=1		2004 LSG=1				2005 LSG=1				2006 LSG=1				2006 school mean less 2005 school mean
	No. of students	school mean	No. of students	school mean	No. of students	school mean	LSG mean	Diff	No. of students	school mean	LSG mean	Diff	No. of students	school mean	LSG mean	Diff	
- After allstudy, English, Further Maths and Maths Methods, studies are listed in descending order of the number of students in the latest year. - From 2005, VET study scores are included. - From 2005, data is based on 'reported' study scores, not 'achieved' study scores.																	
allstudy		27.7		28.0		27.8	28.6	-0.8		28.5	29.0	-0.4		28.7	28.6	0.1	0.2
English EN01	201	28.2	200	28.4	249	28.0	28.3	-0.3	169	28.3	28.4	-0.1	177	29.5	28.0	1.5	1.2
Further Mathematics MA07	62	25.1	97	25.8	110	26.0	28.8	-2.8	90	27.2	29.0	-1.8	81	28.4	28.7	-0.3	1.2
Mathematical Methods MA08	80	24.9	53	26.8	72	27.0	27.8	-0.8	53	27.1	28.1	-1.0	58	28.0	27.9	0.1	0.9
Biology BI03	50	28.8	41	27.6	48	28.7	28.0	0.7	57	28.6	28.9	-0.3	50	29.0	28.6	0.4	0.4
Business Management BM03	50	27.0	70	27.6	51	29.7	28.6	1.0	38	27.9	28.9	-1.0	42	30.7	28.7	2.0	2.8
Chemistry CH03	38	20.1	26	26.2	49	25.3	27.4	-2.1	38	26.5	28.0	-1.6	42	26.3	27.5	-1.2	-0.2
Psychology PY03	62	29.3	69	28.3	111	26.9	28.5	-1.6	33	30.2	29.8	0.4	42	29.2	29.5	-0.3	-1.1
Design & Tech. DT03	26	30.6	32	30.0	33	28.0	29.2	-1.2	35	26.3	29.5	-3.2	40	27.6	29.6	-2.0	1.3
Health & Human Dev. HH03	32	27.9	55	26.9	40	26.7	29.3	-2.6	56	30.1	29.5	0.6	39	27.6	29.4	-1.9	-2.5
Studio Arts SA03	45	30.1	27	29.0	56	27.7	29.3	-1.6	37	30.1	29.4	0.7	36	29.9	28.9	1.0	-0.2
Physics PH03	23	26.1	27	26.3	39	27.1	27.6	-0.5	32	26.0	28.8	-2.8	33	25.5	28.3	-2.8	-0.5
Literature LI01	15	28.0	31	29.6	19	28.7	28.6	0.1	17	30.3	29.2	1.1	31	26.5	28.7	-2.2	-3.8
Physical Ed. PE03	36	29.6	47	30.6	28	29.3	28.8	0.5	37	29.1	28.4	0.7	28	31.2	28.3	2.9	2.1
Legal Studies LS03	20	26.9	17	28.6	31	26.1	28.8	-2.7	36	30.3	29.6	0.7	24	28.8	28.4	0.4	-1.4
Outdoor & Environmental Studies OS03	16	32.8	22	30.0	19	31.0	28.8	2.2					23	29.9	31.0	-1.1	
Info. Systems IT03	24	28.1	15	30.9	20	31.9	31.4	0.5	16	34.3	30.7	3.6	22	29.0	29.1	-0.1	-5.4
Accounting AC03	12	27.0	15	27.9	30	25.7	28.5	-2.8	20	26.7	28.1	-1.5	21	29.4	28.7	0.7	2.7
Art AR03	16	32.6	18	31.8	27	29.3	30.1	-0.8	11	27.3	29.1	-1.8	21	27.4	29.7	-2.3	0.1
Geography GE03	22	29.7	46	25.6	29	26.7	27.3	-0.6	30	28.7	28.0	0.8	21	29.8	28.7	1.0	1.0
History (Revolutions) HI13	39	27.0	23	26.9	20	27.2	27.0	0.2	34	27.8	27.7	0.0	21	26.9	26.4	0.4	-0.9

VCE

School no: 7603
School name: Berwick Secondary College
Explanation: Only 2006 studies, which at least 1 student completed, are included.
Source of data: Victorian Curriculum and Assessment Authority.

Notes:

- After allstudy, English, Further Maths and Maths Methods, studies are listed in descending order of the number of students in the latest year.
- From 2005, VET study scores are included.
- From 2005, data is based on 'reported' study scores, not 'achieved' study scores.

	2002 LSG=1		2003 LSG=1		2004 LSG=1				2005 LSG=1				2006 LSG=1				2006 school mean less 2005 school mean
	No. of students	school mean	No. of students	school mean	No. of students	school mean	LSG mean	Diff	No. of students	school mean	LSG mean	Diff	No. of students	school mean	LSG mean	Diff	
Visual Communication & Design VC03	18	32.4	29	31.2	27	29.6	30.2	-0.6	22	30.9	30.9	0.0	20	29.7	30.0	-0.3	-1.2
Indonesian 2nd Language LO40	10	31.3	7	31.3	15	26.9	25.6	1.2	15	29.8	26.9	2.9	17	28.4	27.0	1.3	-1.4
Specialist Mathematics MA09	18	23.7	18	24.1	15	25.6	27.4	-1.8	14	25.9	27.1	-1.2	17	27.2	26.5	0.6	1.2
Drama DR03													16	22.9	26.3	-3.4	
Info. Processing & Management IT02	32	29.8	43	27.8	46	33.2	29.9	3.2	16	33.7	30.0	3.7	15	32.0	30.6	1.4	-1.7
Philosophy PL03					18	25.6	28.5	-2.9	20	28.4	29.2	-0.9	15	27.5	28.3	-0.8	-0.8
Theatre Studies TS03	11	25.7			12	30.7	25.7	4.9	14	24.3	27.3	-3.1	13	22.5	24.9	-2.4	-1.7
Community Services Work CT11													10	32.7	30.0	2.7	
Media ME03	13	27.2	8	28.9	10	26.6	29.4	-2.8	14	26.2	28.6	-2.4	9	31.9	29.0	2.9	5.7
Food & Tech. FY03	11	32.6	20	29.1	19	29.9	30.6	-0.7	8	32.1	31.5	0.6	8	29.5	30.7	-1.2	-2.6
Dance DA03	12	27.0			10	27.3	27.8	-0.4	5	31.2	28.8	2.4	7	30.6	28.5	2.1	-0.6
German LO10	11	24.4	9	32.9	10	29.1	27.7	1.4	3	30.3	26.5	3.8	5	29.2	29.5	-0.3	-1.1
Hospitality (Comm. Cook) (VCE VET) HS07													4	29.3	29.1	0.1	
Multimedia (VCE VET) MU02													4	30.8	30.3	0.4	
Music Performance: Group MC03	1	20.0	3	30.3	3	35.0	29.8	5.2	3	27.7	28.7	-1.0	4	34.5	28.0	6.5	6.8
Electrotechnology ET06													3	35.3	33.2	2.2	
English ESL EN09	1	29.0	2	28.0	4	34.8	29.6	5.2	8	36.0	32.0	4.0	2	27.0	29.4	-2.4	-9.0
Bosnian LO50													1	33.0	33.0		
Info. Tech (Software Apps) (VCE VET) IN12									4	38.3	32.4	5.8	1	36.0	31.4	4.6	-2.3
Italian LO14					1	26.0	26.9	-0.9					1	41.0	29.7	11.3	
Korean 2nd Language LO47													1	27.0	27.0		
Music (VCE VET) MI07													1	36.0	31.2	4.8	
Music Industry (Tech Prod) (VCE VET) MI09													1	31.0	28.9	2.1	
Music Performance: Solo MC02	3	27.0	2	29.0	2	30.0	28.1	1.9					1	48.0	27.1	20.9	

VCE

School no: 7603
School name: Berwick Secondary College
Explanation: Only 2006 studies, which at least 1 student completed, are included.
Source of data: Victorian Curriculum and Assessment Authority.

Notes:	2002 LSG=1		2003 LSG=1		2004 LSG=1				2005 LSG=1				2006 LSG=1				2006 school mean less 2005 school mean
	No. of students	school mean	No. of students	school mean	No. of students	school mean	LSG mean	Diff	No. of students	school mean	LSG mean	Diff	No. of students	school mean	LSG mean	Diff	
- After allstudy, English, Further Maths and Maths Methods, studies are listed in descending order of the number of students in the latest year.																	
- From 2005, VET study scores are included.																	
- From 2005, data is based on 'reported' study scores, not 'achieved' study scores.																	
Serbian LO25					1								1	20.0	20.0		
Sinhala LO34	1	33.0			1	32.0	32.0						1	38.0	38.0		

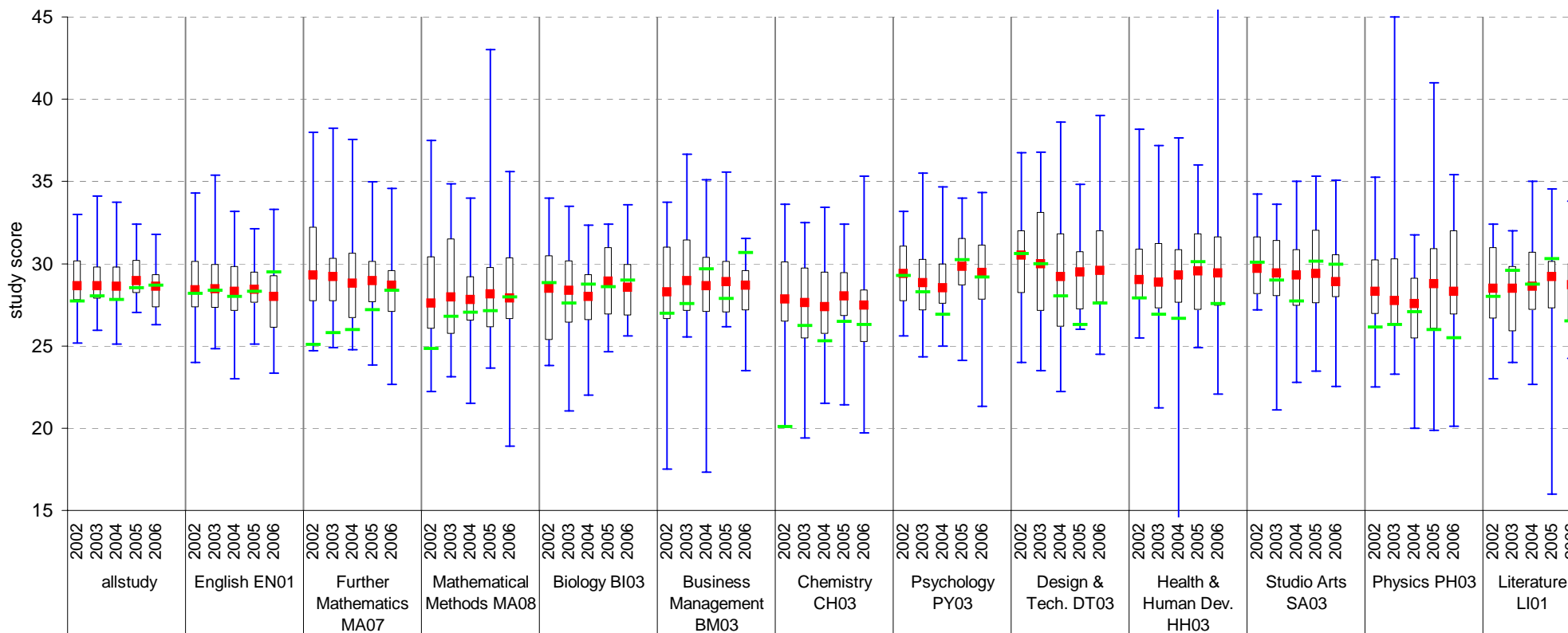
VCE

School no: 7603

School name: Berwick Secondary College

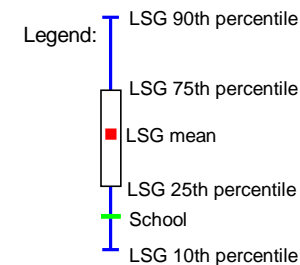
Source of data: Victorian Curriculum and Assessment Authority.

School mean plotted against the distribution of school means for schools in that LSG, for each study, 2002 to 2006 (chart 1 of 3)



Notes:

- After allstudy, English and the two mathematics, the remaining studies are charted in order of the number of students who completed that study in 2006, from highest to lowest.
- From 2005, VET study scores are included.
- From 2005, data is based on 'reported' study scores, not 'achieved' study scores.
- Care should be taken when interpreting this chart, as the number of students may be small.
- Only the results of the 31 studies with the most students (apart from English and the two mathematics) are charted.



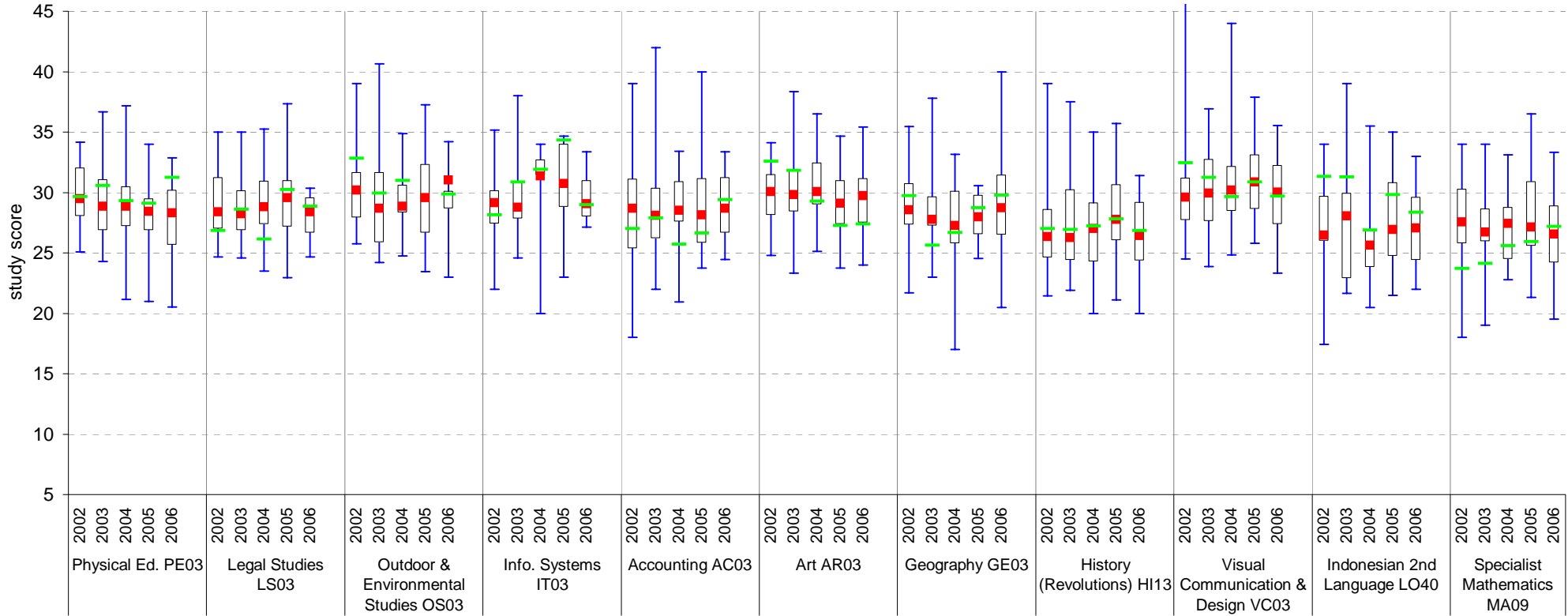
VCE Results

School no: 7603

School name: Berwick Secondary College

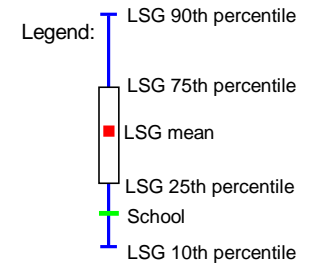
Source of data: Victorian Curriculum and Assessment Authority.

School mean plotted against the distribution of school means for schools in that LSG, for each study, 2002 to 2006 (chart 2 of 3)



Notes:

- After allstudy, English and the two mathematics, the remaining studies are charted in order of the number of students who completed that study in 2006, from highest to lowest.
- From 2005, VET study scores are included.
- From 2005, data is based on 'reported' study scores, not 'achieved' study scores.
- Care should be taken when interpreting this chart, as the number of students may be small.
- Only the results of the 31 studies with the most students (apart from English and the two mathematics) are charted.



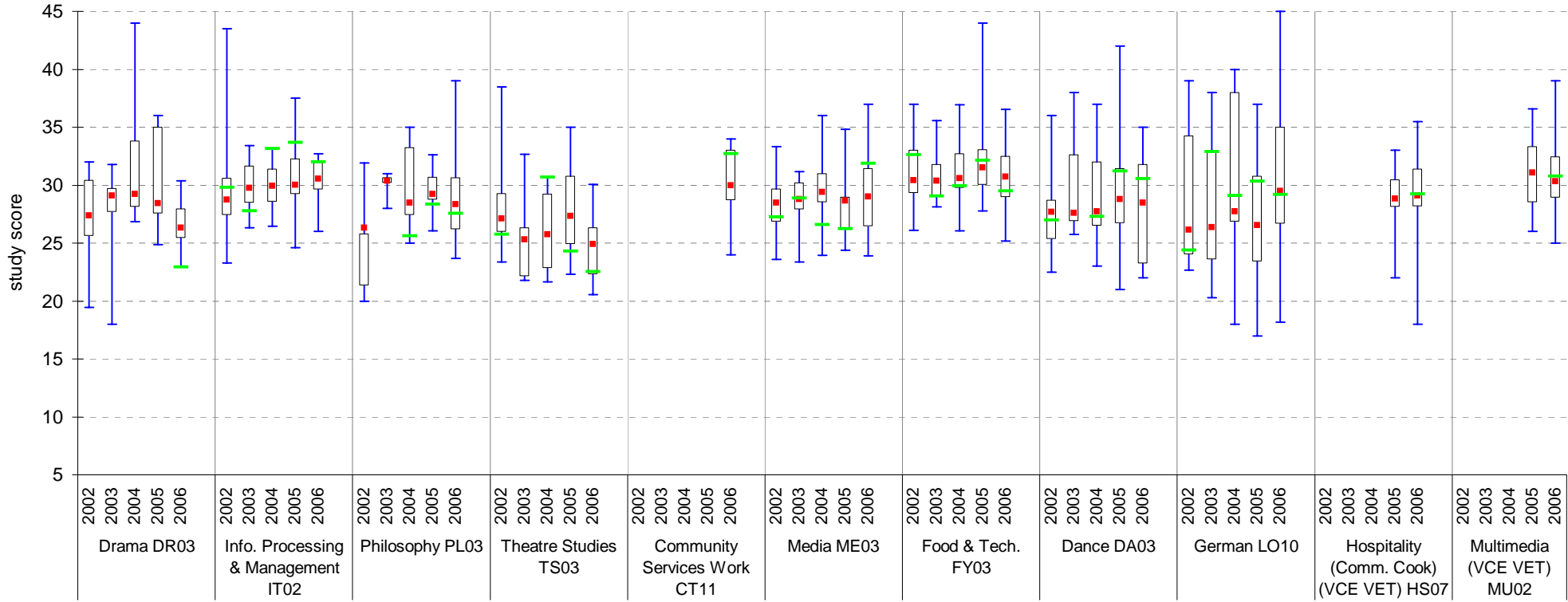
VCE Results

School no: 7603

School name: Berwick Secondary College

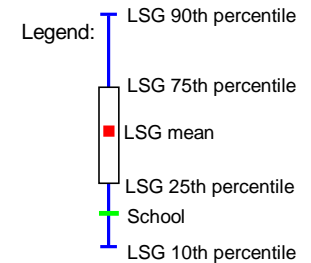
Source of data: Victorian Curriculum and Assessment Authority.

School mean plotted against the distribution of school means for schools in that LSG, for each study, 2002 to 2006 (chart 3 of 3)



Notes:

- After allstudy, English and the two mathematics, the remaining studies are charted in order of the number of students who completed that study in 2006, from highest to lowest.
- From 2005, VET study scores are included.
- From 2005, data is based on 'reported' study scores, not 'achieved' study scores.
- Care should be taken when interpreting this chart, as the number of students may be small.
- Only the results of the 31 studies with the most students (apart from English and the two mathematics) are charted.

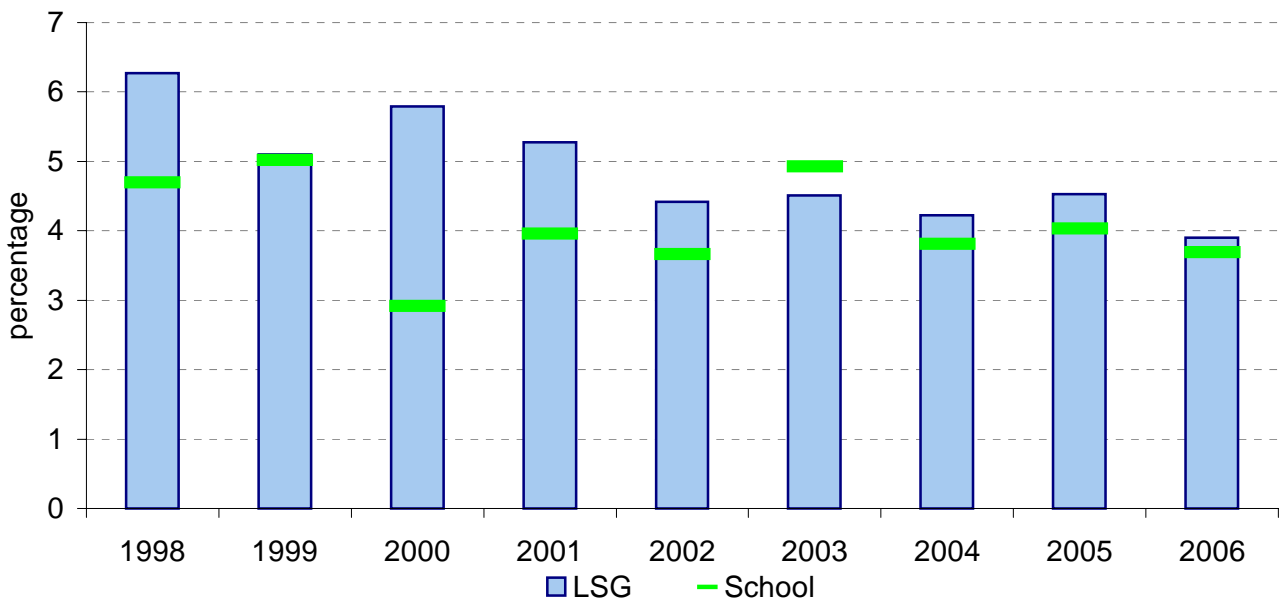


VCE: Study Scores of 40 or more

School no: 7603
School name: Berwick Secondary College
Explanation: Of all VCE study scores, the percentage that were 40 or more.
Source of data: Victorian Curriculum and Assessment Authority.

Year	School		LSG	State (all govt schools)
	Total study scores	% 40 or more*	% 40 or more	% 40 or more
1998	618	4.7	6.3	6.2
1999	738	5.0	5.1	6.2
2000	893	2.9	5.8	6.0
2001	909	4.0	5.3	6.0
2002	1011	3.7	4.4	6.0
2003	1076	4.9	4.5	5.9
2004	1286	3.8	4.2	6.0
2005	993	4.0	4.5	6.1
2006	1030	3.7	3.9	6.0

VCE percentage of study scores of 40 or more*, 1998 to 2006



Note:

* Prior to 2005, this data may not match the information published in *The Age*. Data presented on this page prior to 2005 does not include study scores from the small number of VET studies that are given study scores.
 - From 2005, VET study scores are included.
 - From 2005, data is based on 'reported' study scores, not 'achieved' study scores.

VET

School no: 7603

School name: Berwick Secondary College

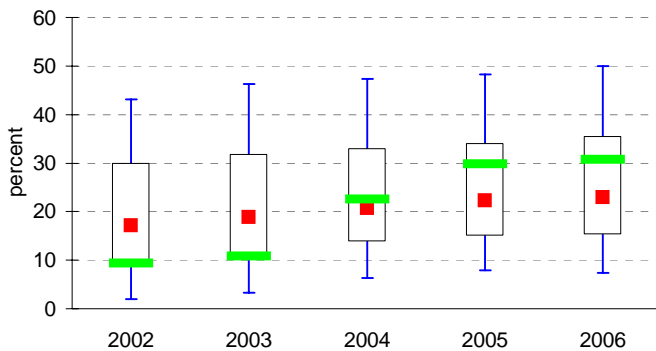
Source of data: Victorian Curriculum and Assessment Authority.

More detailed information is available on the VASS system provided by VCAA.

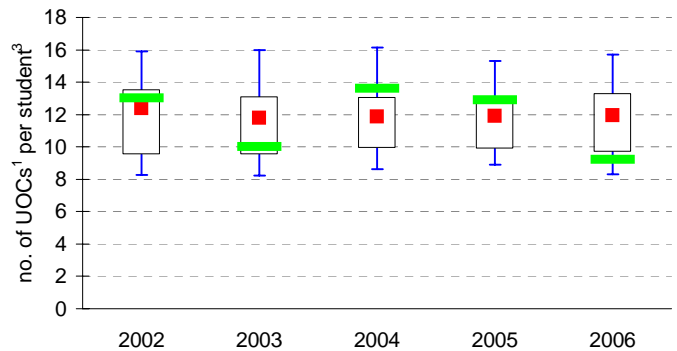
Participation						Completion			
School						State			
Year	Level	No. students undertaking at least 1 UOC ¹	% students ² undertaking at least 1 UOC ¹	Avg no. UOCs ¹ undertaken per student ³	% students ² undertaking at least 1 UOC ¹	Avg no. UOCs ¹ undertaken per student ³	No. UOCs ¹ with satisfactory result	% UOCs ¹ with satisfactory result	% UOCs ¹ with satisfactory result
2002	10	0	0	-			-	-	
	11	33	11.9	14.8			296	60.8	
	12	13	6.1	8.7			91	80.5	
	10-12	46	9.3	13	17.2	12.4	387	64.5	73.7
2003	10	2	0.6	10			1	5	
	11	85	23.7	9.8			601	72.1	
	12	12	5.4	11.6			109	78.4	
	10-12	99	10.8	10	18.8	11.8	711	71.6	73.5
2004	10	18	5.1	15			42	15.6	
	11	90	29.4	12.8			522	45.3	
	12	108	35.7	14.1			813	53.4	
	10-12	216	22.5	13.6	20.7	11.9	1377	46.7	71.3
2005	10	14	6	12.2			95	55.6	
	11	136	41.5	11.4			1000	64.5	
	12	89	36.7	15.4			1006	73.5	
	10-12	239	29.8	12.9	22.3	11.9	2101	68	72.6
2006	10	21	8.4	11.6			214	87.7	
	11	102	44.9	8.2			788	94.6	
	12	106	39.6	9.6			929	91.2	
	10-12	229	30.7	9.2	23.0	12.0	1931	92.1	75.6

Participation

% Yr10-12 students² undertaking at least 1 UOC¹, school plotted on state benchmarks, 2002 to 2006

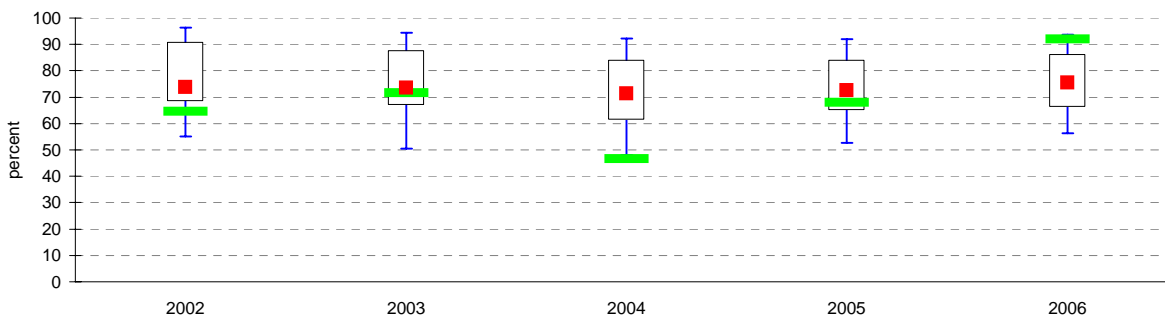


Avg no. UOCs¹ undertaken per student³, school plotted on state benchmarks, 2002 to 2006



Completion

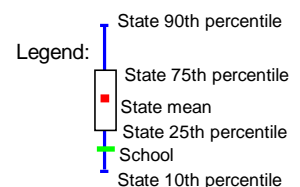
% UOCs¹ with satisfactory result, school plotted on state benchmarks, 2002 to 2006



Notes:¹ UOC = Unit(s) of Competency.

² % students based on year 10, 11 and 12 August enrolments.

³ only includes students undertaking at least 1 UOC.



VCAL

School no: 7603

School name: Berwick Secondary College

Explanation: 'No. of VCAL credits undertaken' is calculated by summing the number of credits undertaken by each VCAL student across all VCAL students.

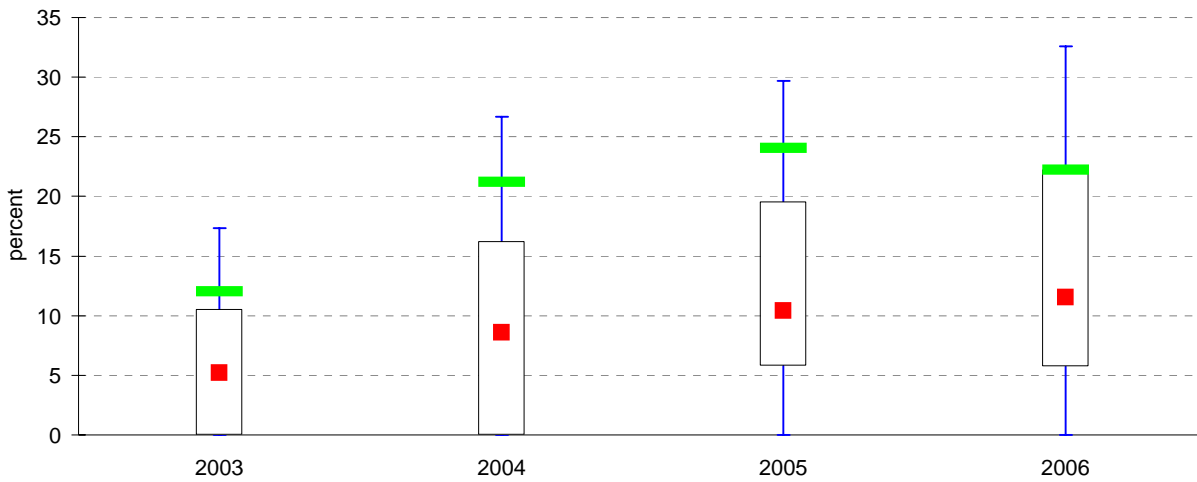
The data contained in this page is for all VCAL strands and levels combined.

Source of data: Victorian Curriculum and Assessment Authority.
More detailed information is available on the VASS system provided by VCAA.

Participation						Completion		
		School		State		School		State
Year	Level	No. students ¹	No. students undertaking VCAL	% students ¹ undertaking VCAL	% students ¹ undertaking VCAL	No. VCAL unit credits undertaken	% satisfactory completion of VCAL credits	% satisfactory completion of VCAL credits
2003	11-12	580.9	70	12.1	5.2	222	83.8	73.6
2004	11-12	608.2	129	21.2	8.6	724	71.4	70.4
2005	11-12	569.9	137	24.0	10.4	813	77.0	72.9
2006	11-12	494.9	110	22.2	11.5	599	88.3	77.7

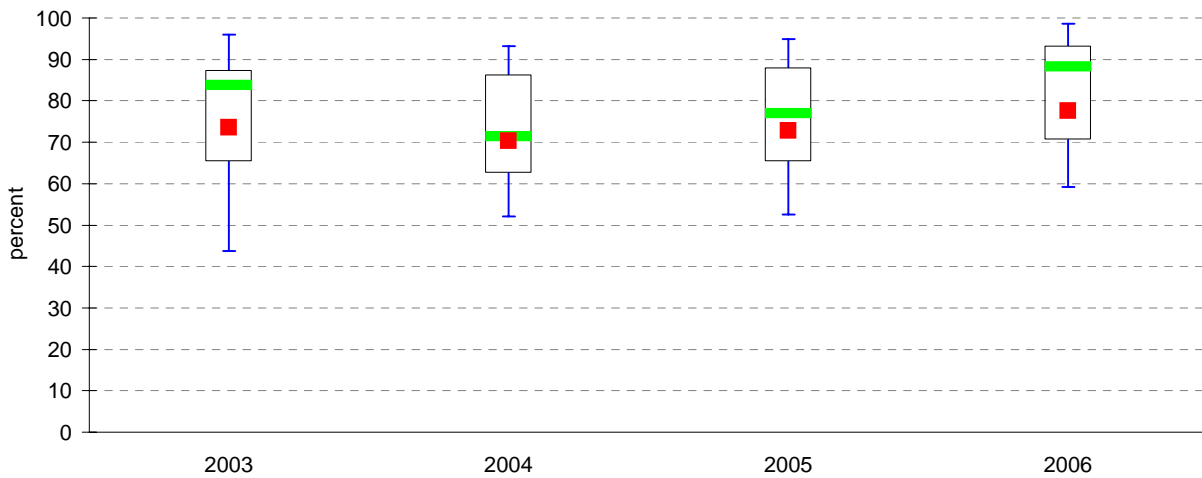
Participation

% Yr11-12 students¹ undertaking VCAL, school plotted on state benchmarks, 2003 to 2006

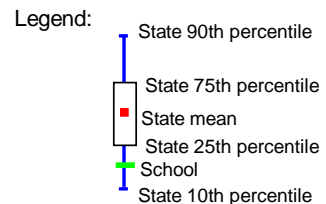


Completion

% satisfactory completion of VCAL credits, school plotted on state benchmarks, 2003 to 2006



Notes:¹ No. and % students based on year 11 and 12 August enrolments.



Teacher Assessment of Student Progress (PSD students)

School no: 7603

School name: Berwick Secondary College

Explanation: Teachers assess their students' progress against the 8 VELS Domains / CSF KLAs using a 6-point scale (students in special schools and those who cannot be assessed against the VELS / CSF).

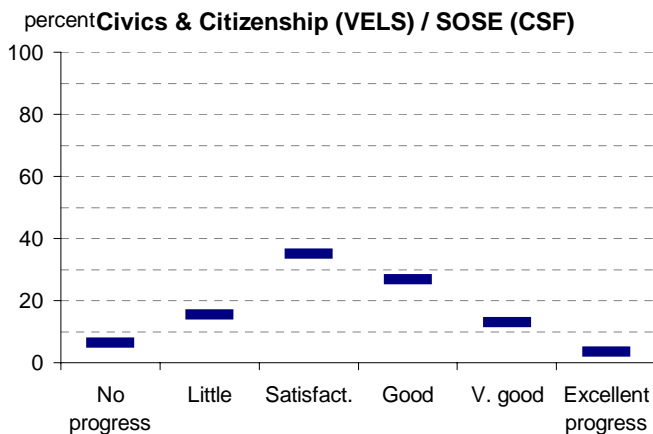
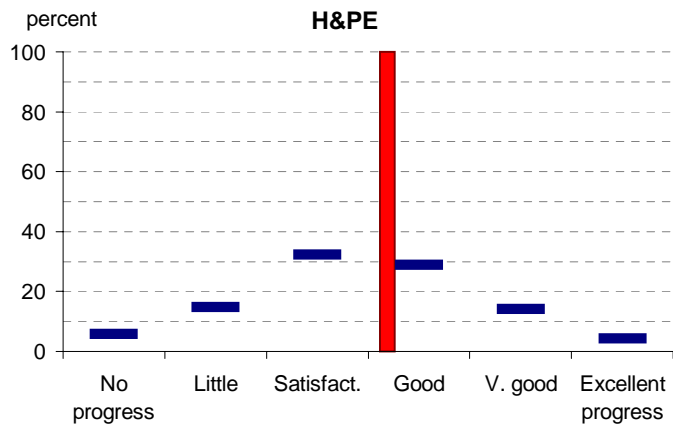
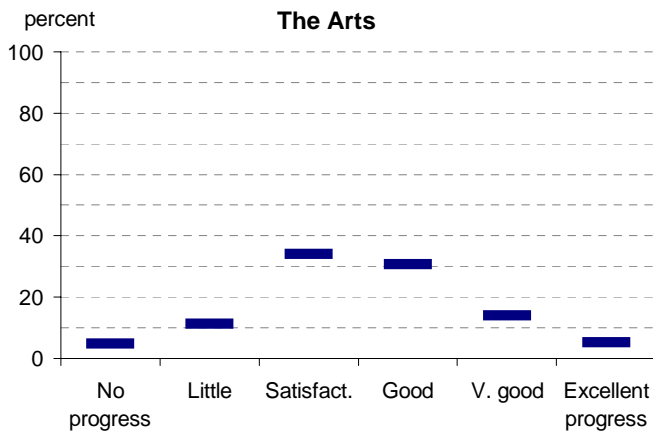
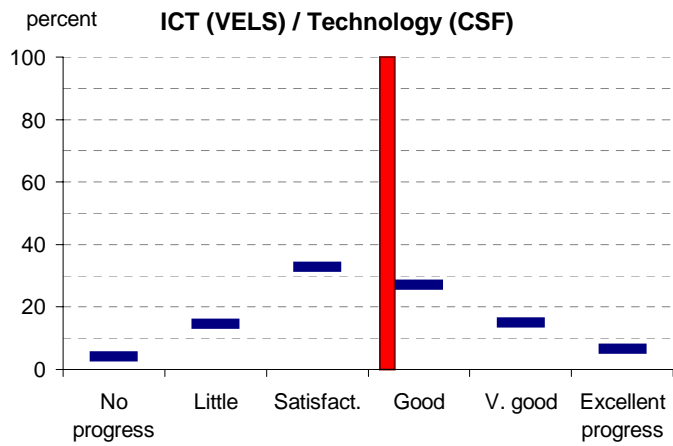
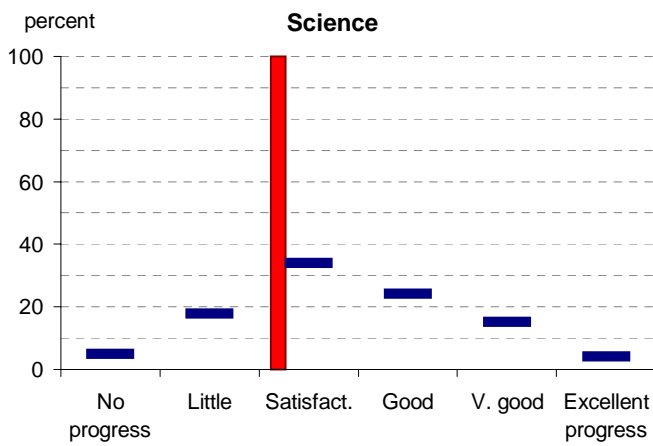
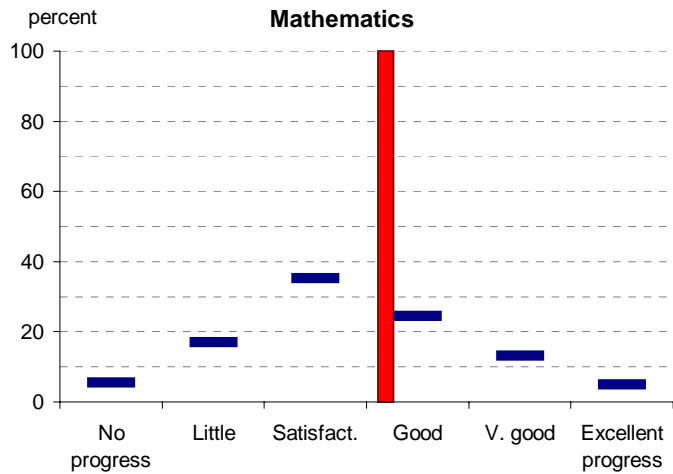
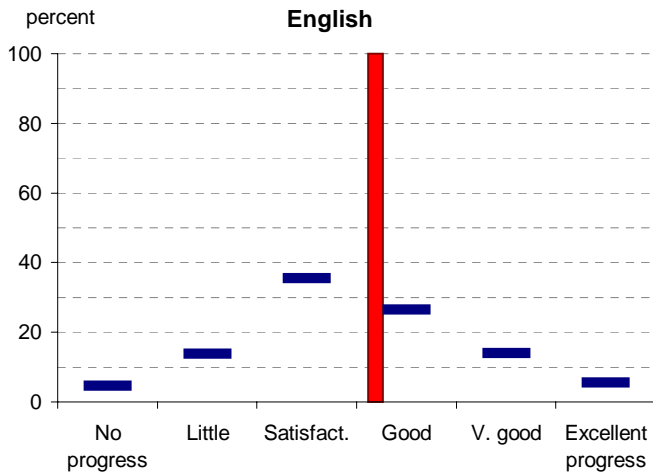
Source of data: Data transmitted from school to DoE via an online web-form.

	No progress (%)	Little progress (%)	Satisfactory progress (%)	Good progress (%)	Very good progress (%)	Excellent progress (%)	Total students assessed ¹ (no.)
2002 (by CSF KLA)							
English				100			2
Mathematics				100			2
Science			100				1
Technology				100			2
The Arts							
H&PE				100			1
SOSE							
2003 (by CSF KLA)							
English							
Mathematics							
Science							
Technology							
The Arts							
H&PE							
SOSE							
2004 (by CSF KLA)							
English							
Mathematics							
Science							
Technology							
The Arts							
H&PE							
SOSE							
2005 (by CSF KLA)							
English							
Mathematics							
Science							
Technology							
The Arts							
H&PE							
SOSE							
2006 (by VELS Domain)							
English							
Mathematics							
Science							
ICT							
The Arts							
H&PE							
Civics & Citizenship							
2005 Secondary state benchmarks (by CSF KLA) (2006 benchmarks are not available at this stage)							
English	5	14	36	26	14	6	
Mathematics	5	17	35	24	13	5	
Science	5	18	34	24	15	4	
Technology	4	15	33	27	15	6	
The Arts	5	11	34	31	14	5	
H&PE	6	15	32	29	14	4	
SOSE	6	15	35	27	13	3	

Note: ¹ If schools provided percentages only, it is not possible to report the number of students assessed. In these cases, the total percentage (100) will be shown.

Teacher Assessment of Student Progress (PSD students)

School no: 7603
 School name: Berwick Secondary College

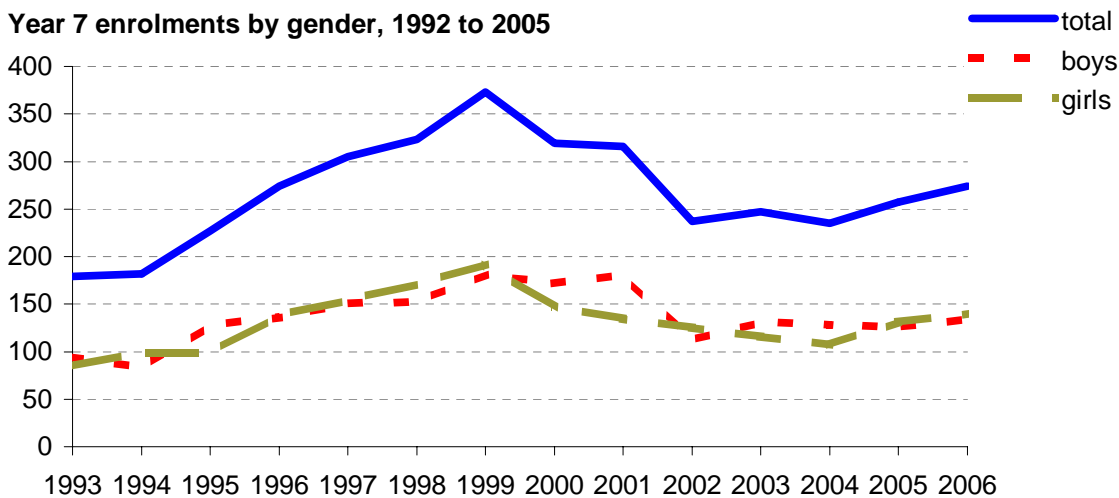
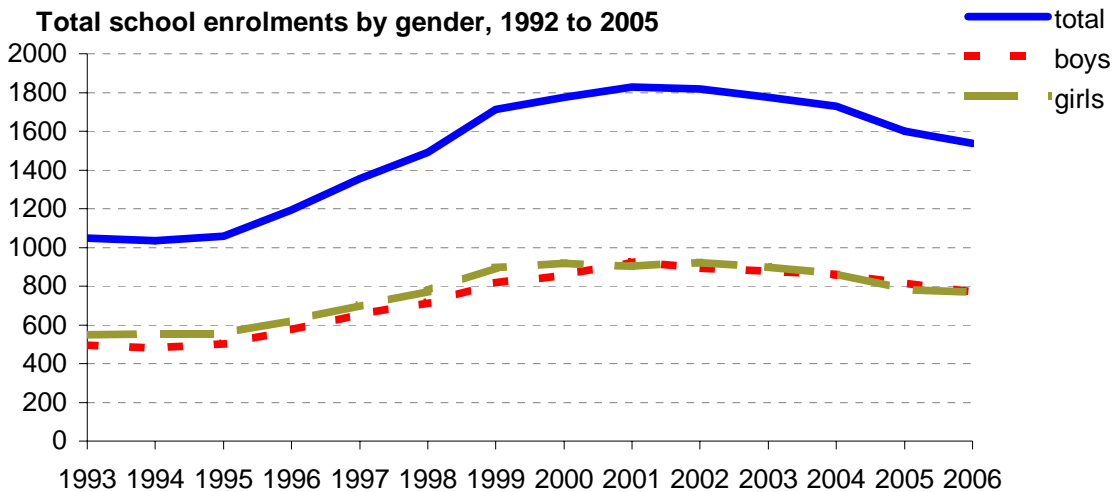


- 2002 (by CSF KLA)
- 2003 (by CSF KLA)
- 2004 (by CSF KLA)
- 2005 (by CSF KLA)
- 2006 (by VELS Domain)

Enrolments

School no: 7603
School name: Berwick Secondary College
Explanation: Enrolments at February census.
Source of data: February census.

Year	Total school enrolment			Prep enrolment			Year 7 enrolments		
	boys	girls	total	boys	girls	total	boys	girls	total
1993	497	550	1047				94	85	179
1994	478	555	1033				83	99	182
1995	504	556	1059				128	99	227
1996	572	620	1192				136	138	274
1997	655	702	1357				151	154	305
1998	715	775	1490				152	171	323
1999	818	896	1713				181	192	373
2000	858	919	1777				172	147	319
2001	925	904	1829				181	135	316
2002	894	924	1818				112	125	237
2003	876	899	1775				131	116	247
2004	861	867	1728				128	107	235
2005	818	784	1601				126	131	257
2006	771	767	1538				134	140	274



Apparent Retention

School no: 7603
School name: Berwick Secondary College
Report Year: 2006
Explanation: Apparent retention rates are based on enrolments. For example, Year 7Feb-12Aug apparent retention refers to year 12 enrolment of students in full-time school education in August expressed as a percentage of year 7 enrolments in February five years earlier.
Source of data: February and August census.

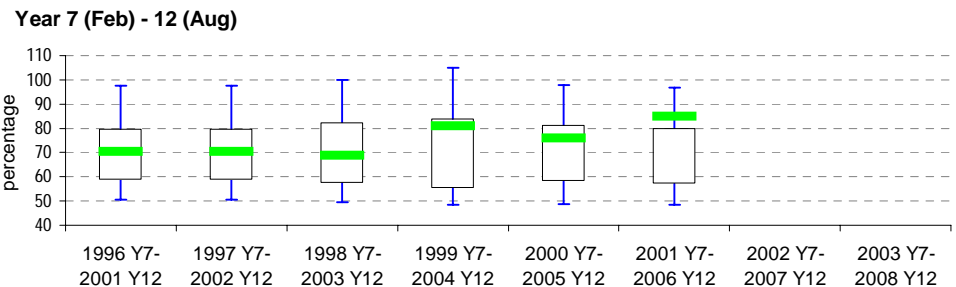
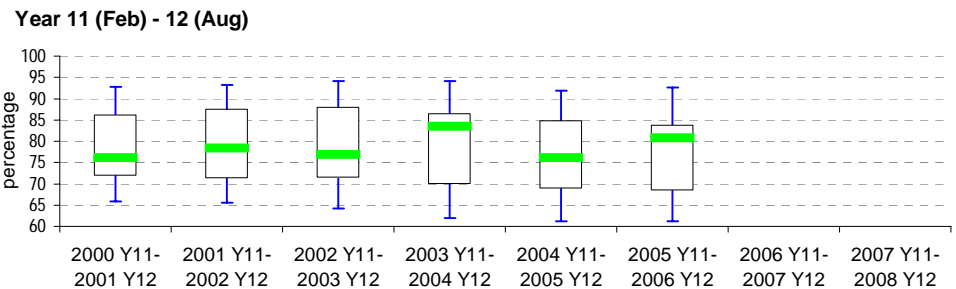
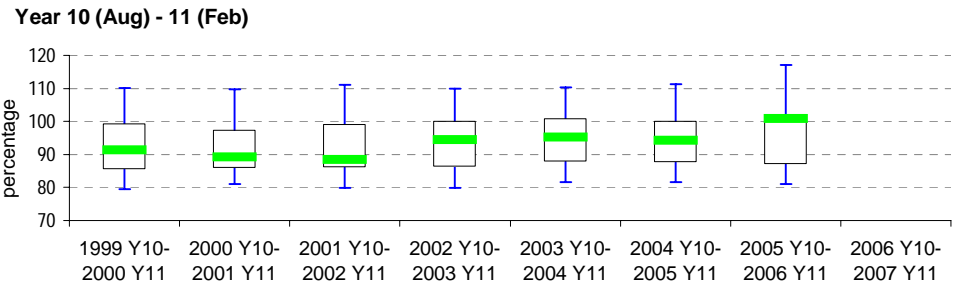
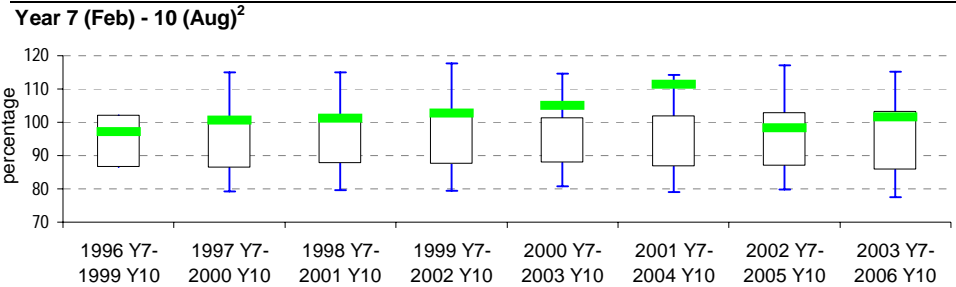
	Cohorts							
Year 7	1996	1997	1998	1999	2000	2001	2002	2003
Year 10	1999	2000	2001	2002	2003	2004	2005	2006
Year 11	2000	2001	2002	2003	2004	2005	2006	
Year 12	2001	2002	2003	2004	2005	2006		
Year 7 (Feb)	no. 274	305	323	373	319	316	237	247
Year 10 (Aug)	no. 266	307	327	383	335	352	233	251
Year 7 (Feb) - 10 (Aug)	% 97.1	100.7	101.2	102.7	105.0	111.4	98.3	101.6
LSG mean ³	% 94.9	94.5	97.0	95.6	96.4	94.6	97.0	101.2
State mean ³	% 95.0	96.6	97.3	95.0	96.6	96.3	97.6	97.3
Year 10 (Aug)	no. 266	307	327	383	335	352	233	
Year 11 (Feb)	no. 243	274	289.1	361.9	319	332	235	
Year 10 (Aug) - 11 (Feb)	% 91.4	89.3	88.4	94.5	95.2	94.3	100.9	
LSG mean ³	% 104.5	99.9	96.5	100.3	102.6	97.3	100.9	
State mean ³	% 96.7	96.4	96.2	97.7	98.7	98.2	99.0	
Year 11 (Feb)	no. 243	274	289.1	361.9	319	332		
Year 12 (Aug)	no. 184.9	214.6	222	302.2	242.5	267.9		
Year 11 (Feb) - 12 (Aug)	% 76.1	78.3	76.8	83.5	76.0	80.7		
LSG mean ³	% 80.3	84.0	84.1	79.9	79.4	84.1		
State mean ³	% 81.3	80.7	82.5	81.0	79.9	78.8		
Year 7 (Feb)	no. 274	305	323	373	319	316		
Year 12 (Aug)	no. 184.9	214.6	222	302.2	242.5	267.9		
Year 7 (Feb) - 12 (Aug)	% 67.5	70.4	68.7	81.0	76.0	84.8		
LSG mean ³	% 78.5	78.1	78.3	78.2	78.6	77.3		
State mean ³	% 75.9	76.7	77.2	76.9	76.8	74.6		

Legend:

	LSG History ¹			
	Year	LSG	Year	LSG
State 90th percentile	2006	1	2002	1
	2005	1	2001	1
State 75th percentile	2004	1	2000	1
	2003	1	1999	4

Notes:
¹ The LSG of the school in the latter year (eg for Year 7 2001 to Year 12 2006, the LSG in 2006).
² 90th and 10th percentiles for Yr7-10 available from 2000 only.

Apparent school retention rates plotted on state benchmarks



Real Retention

School no: 7603
School name: Berwick Secondary College
Report Year: 2006
Explanation: Real retention rates show the percentage of students who have been enrolled at the same school over a period of time.

For example, the formula for the real retention rate for Year 7Feb to 10Aug for school X in 2006 is as follows:

$$\frac{\text{(no. of students enrolled in Yr10 in school X as at August 2006 census and who enrolled prior to 1/3/2003, ie, enrolled in school X at beginning of Yr7)}}{\text{(enrolments in Yr7 Feb in 2003 according to census)}} * 100$$

By definition, real school retention will be less than or equal to 100% (assuming there are no students repeating the year, or accelerating through years).

Generally, real school retention rates are affected by students transferring to another school & students exiting the school system. They are a measure of the 'holding power' of the school.

Source of data: Data retrieved electronically from CASES21 at time of rollover.

		Year 7 cohorts						
Year 7		1997	1998	1999	2000	2001	2002	2003
Year 10		2000	2001	2002	2003	2004	2005	2006
Year 11		2001	2002	2003	2004	2005	2006	
Year 12		2002	2003	2004	2005	2006		
Year 7 (Feb)	no.		323	373	319	316	237	247
Year 10 (Aug)	no.		254	293	251	265	178	203
Year 7 (Feb) - 10 (Aug)	%		78.6	78.6	78.7	83.9	75.1	82.2
LSG median ²	%		78.6	77.8	77.7	75.7	75.6	75.6
State median ²	%		73.4	72.9	71.9	71.4	71.6	71.6
Year 10 (Aug)	no.	307	327	383	335	352	233	
Year 11 (Feb)	no.	247	274.7	327	290	312	210	
Year 10 (Aug) - 11 (Feb)	%	80.5	84.0	85.4	86.6	88.6	90.1	
LSG median ²	%	83.0	84.9	85.9	87.0	83.7	83.7	
State median ²	%	85.7	83.3	84.8	85.1	85.2	85.2	
Year 11 (Feb)	no.	274	289.1	361.9	319	332		
Year 12 (Aug)	no.	198.9	209	285.3	226.8	256		
Year 11 (Feb) - 12 (Aug)	%	72.6	72.3	78.8	71.1	77.1		
LSG median ²	%	78.3	77.6	77.5	77.7	77.7		
State median ²	%	73.6	73.4	72.2	72.8	72.8		
Year 7 (Feb)	no.	305	323	373	319	316		
Year 12 (Aug)	no.	158.4	170	214.3	173.3	188		
Year 7 (Feb) - 12 (Aug)	%	51.9	52.6	57.5	54.3	59.5		
LSG median ²	%	55.4	57.6	56.4	55.2	55.2		
State median ²	%	49.1	49.0	48.7	49.4	49.4		

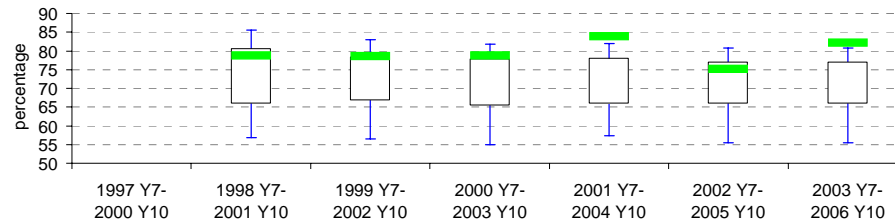
Legend:

		LSG History ¹			
		Year	LSG	Year	LSG
State 90th percentile		2006	1	2003	1
		2005	1	2002	1
		2004	1	2001	1

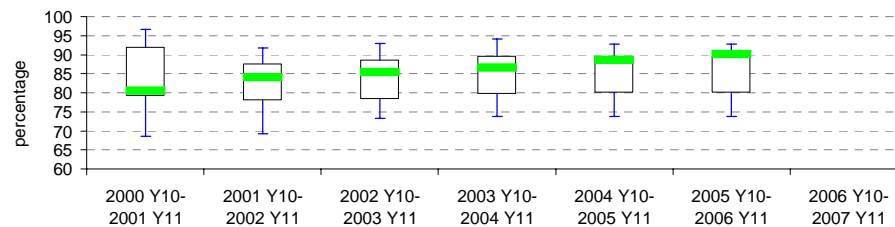
Notes:
¹ The LSG of the school in the latter year (eg for Year 7 2001 to Year 12 2006, the LSG in 2006).
² 2006 benchmarks are not available at this stage. In the meantime, 2005 benchmarks are shown.

Real school retention rates plotted on state benchmarks²

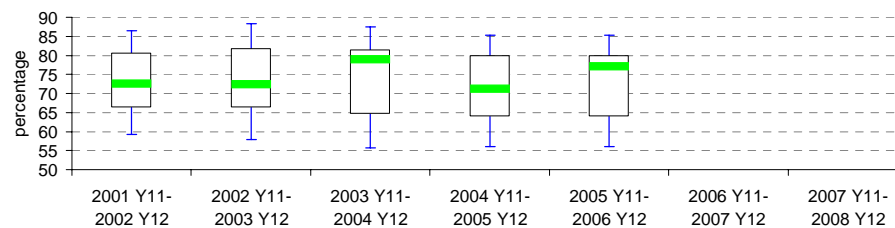
Year 7 (Feb) - 10 (Aug)



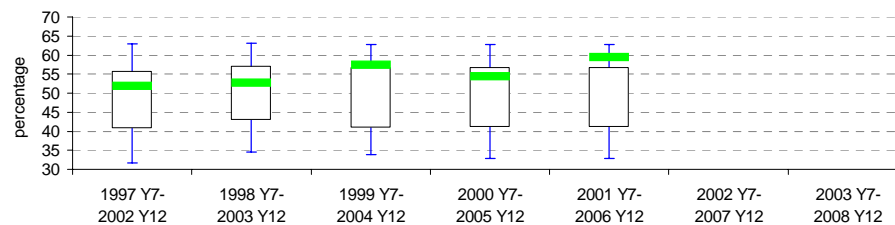
Year 10 (Aug) - 11 (Feb)



Year 11 (Feb) - 12 (Aug)



Year 7 (Feb) - 12 (Aug)



Exit Destination: Year 10

School no: 7603

School name: Berwick Secondary College

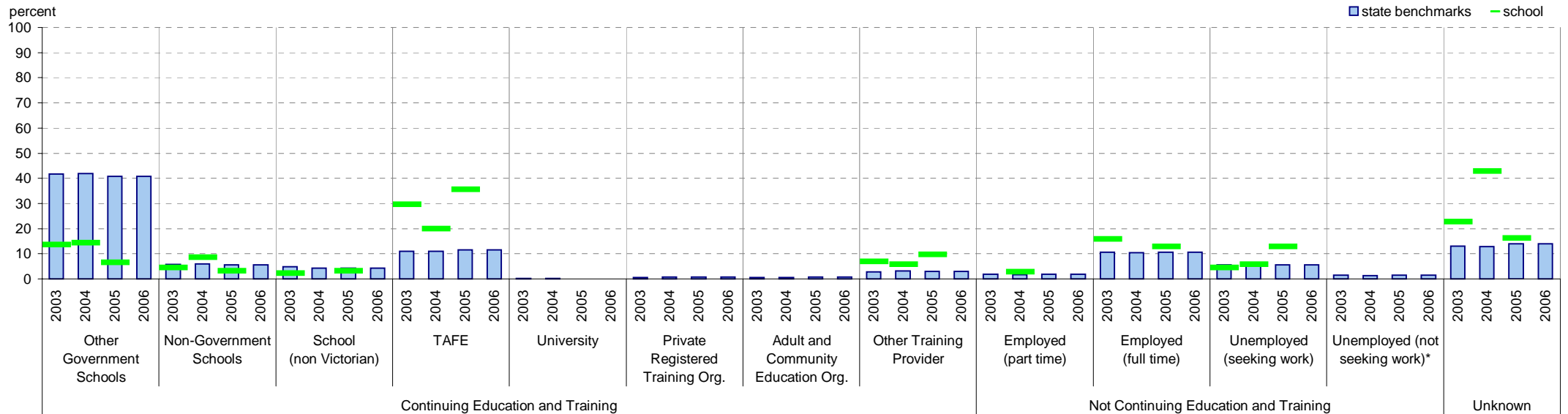
Explanation: The destination of students who left during or at the end of Year 10.

Source of data: Data retrieved electronically from CASES21 following February census.

Exit Destination	2003		2004		2005		2006		2005 state^
	n	%	n	%	n	%	n	%	%
Continuing education and training									
Other Government Schools (Victorian)	6	13.6	5	14.3	2	6.5			40.8
Non-Government Schools (Victorian)	2	4.5	3	8.6	1	3.2			5.6
School (non Victorian)	1	2.3			1	3.2			4.2
TAFE (Victorian)	13	29.5	7	20.0	11	35.5			11.6
TAFE (non Victorian)									0.1
University (Victorian)									0.1
University (non Victorian)									0.01
Private Registered Training Organisation									0.8
Adult and Community Education Organisation									0.8
Other Training Provider	3	6.8	2	5.7	3	9.7			3.0
SUBTOTAL	25	56.8	17	48.6	18	58.1			66.8
Not continuing education and training									
Employed (part time)			1	2.9					1.8
Employed (full time)	7	15.9			4	12.9			10.6
Unemployed (seeking work)	2	4.5	2	5.7	4	12.9			5.5
Unemployed (not seeking work)*									1.4
SUBTOTAL	9	20.5	3	8.6	8	25.8			19.3
Unknown	10	22.7	15	42.9	5	16.1			13.9
TOTAL	44	100.0	35	100.0	31	100.0			100.0
Total Yr 10 February enrolment	341		352		247				

Notes: ^ 2006 benchmarks are not available at this stage. In the meantime, 2005 benchmarks are shown.
* includes deceased students.

Exit destination of students who left during or at the end of Year 10, school vs state benchmarks^ (2003 to 2006)



Exit Destination: Year 11

School no: 7603

School name: Berwick Secondary College

Explanation: The destination of students who left during or at the end of Year 11.

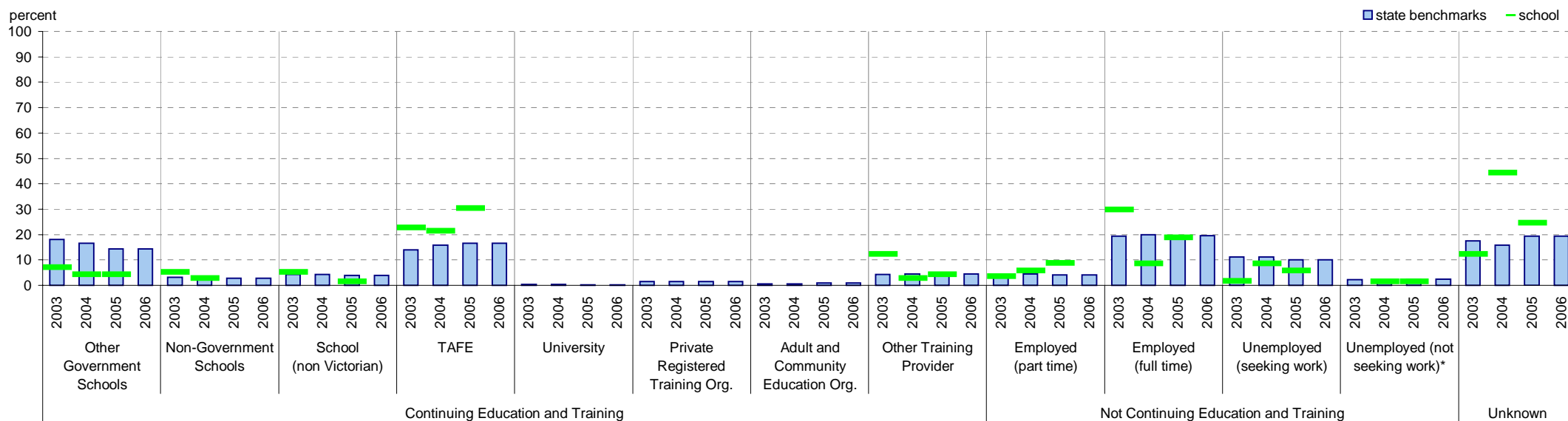
Source of data: Data retrieved electronically from CASES21 following February census.

Exit Destination	2003		2004		2005		2006		2005 state^
	n	%	n	%	n	%	n	%	%
Continuing education and training									
Other Government Schools (Victorian)	4	7.0	3	4.3	3	4.3			14.3
Non-Government Schools (Victorian)	3	5.3	2	2.9					2.8
School (non Victorian)	3	5.3			1	1.4			3.9
TAFE (Victorian)	13	22.8	14	20.0	20	29.0			16.4
TAFE (non Victorian)			1	1.4	1	1.4			0.2
University (Victorian)									0.1
University (non Victorian)									0.06
Private Registered Training Organisation									1.4
Adult and Community Education Organisation									0.9
Other Training Provider	7	12.3	2	2.9	3	4.3			4.4
SUBTOTAL	30	52.6	22	31.4	28	40.6			44.4
Not continuing education and training									
Employed (part time)	2	3.5	4	5.7	6	8.7			4.2
Employed (full time)	17	29.8	6	8.6	13	18.8			19.6
Unemployed (seeking work)	1	1.8	6	8.6	4	5.8			10.0
Unemployed (not seeking work)*			1	1.4	1	1.4			2.5
SUBTOTAL	20	35.1	17	24.3	24	34.8			36.3
Unknown	7	12.3	31	44.3	17	24.6			19.4
TOTAL	57	100.0	70	100.0	69	100.0			100.0

Total Yr 11 February enrolment 362 319 332

Notes: ^ 2006 benchmarks are not available at this stage. In the meantime, 2005 benchmarks are shown.
* includes deceased students.

Exit destination of students who left during or at the end of Year 11, school vs state benchmarks^ (2003 to 2006)



Exit Destination: Students who left Year 12 before completing the year

School no: 7603

School name: Berwick Secondary College

Explanation: The destination of students who left prior to completing Year 12.

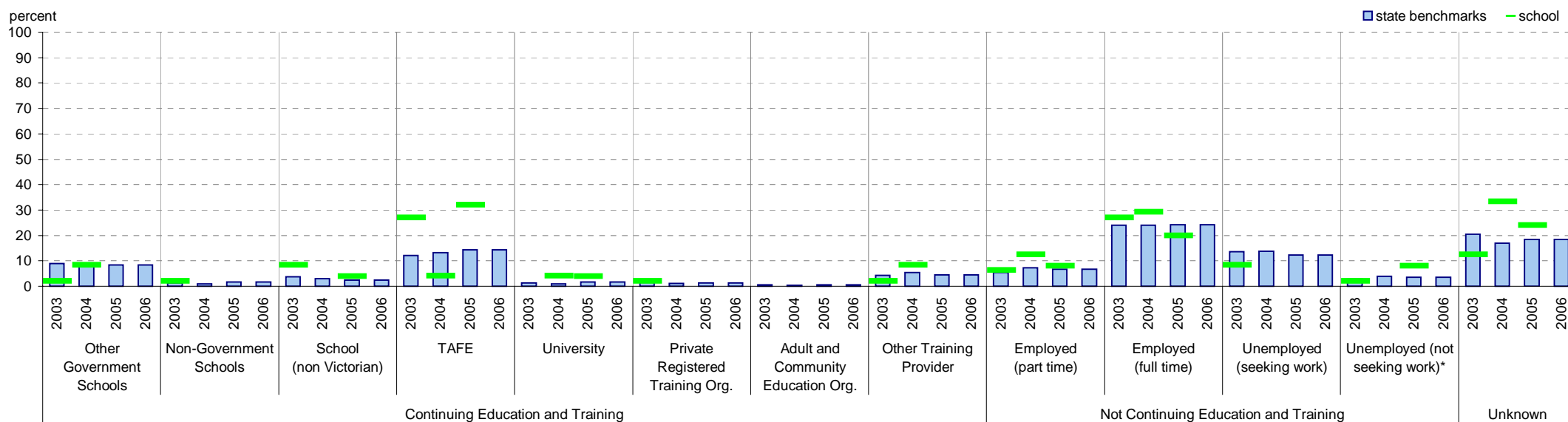
Source of data: Data retrieved electronically from CASES21 following February census.

Exit Destination	2003		2004		2005		2006		2005 state^
	n	%	n	%	n	%	n	%	%
Continuing education and training									
Other Government Schools (Victorian)	1	2.1	2	8.3					8.3
Non-Government Schools (Victorian)	1	2.1							1.7
School (non Victorian)	4	8.3			1	4.0			2.5
TAFE (Victorian)	13	27.1	1	4.2	8	32.0			14.2
TAFE (non Victorian)									0.0
University (Victorian)			1	4.2	1	4.0			1.2
University (non Victorian)									0.43
Private Registered Training Organisation	1	2.1							1.4
Adult and Community Education Organisation									0.7
Other Training Provider	1	2.1	2	8.3					4.5
SUBTOTAL	21	43.8	6	25.0	10	40.0			34.9
Not continuing education and training									
Employed (part time)	3	6.3	3	12.5	2	8.0			6.7
Employed (full time)	13	27.1	7	29.2	5	20.0			24.2
Unemployed (seeking work)	4	8.3							12.3
Unemployed (not seeking work)*	1	2.1			2	8.0			3.5
SUBTOTAL	21	43.8	10	41.7	9	36.0			46.7
Unknown	6	12.5	8	33.3	6	24.0			18.4
TOTAL	48	100.0	24	100.0	25	100.0			100.0

Total Yr 12 February enrolment 234 321 267

Notes: ^ 2006 benchmarks are not available at this stage. In the meantime, 2005 benchmarks are shown.
* includes deceased students.

Exit destination of students who left Year 12 before completing the year, school vs state benchmarks^ (2003 to 2006)



Exit Destination: Students who left at the end of Year 12

School no: 7603

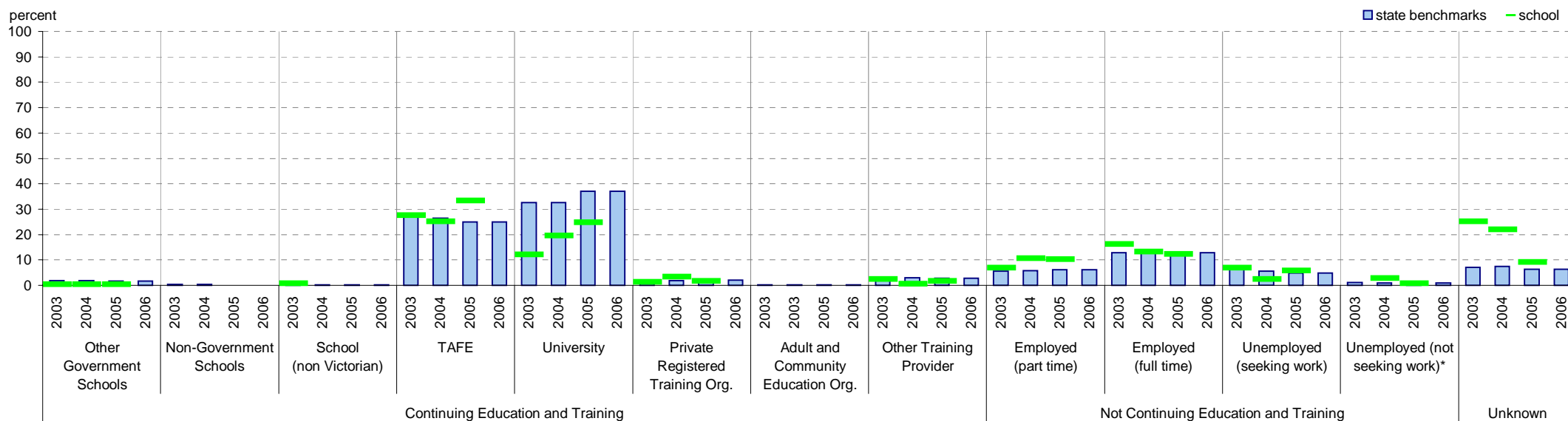
School name: Berwick Secondary College

Explanation: The destination of students who left at the end of Year 12.

Source of data: Data retrieved electronically from CASES21 following February census.

Exit Destination	2003		2004		2005		2006		2005 state^
	n	%	n	%	n	%	n	%	%
Continuing education and training									
Other Government Schools (Victorian)	1	0.4	1	0.3	1	0.4			1.7
Non-Government Schools (Victorian)									0.1
School (non Victorian)	2	0.8							0.2
TAFE (Victorian)	68	27.6	81	25.1	81	33.3			24.8
TAFE (non Victorian)									0.2
University (Victorian)	30	12.2	61	18.9	59	24.3			35.9
University (non Victorian)			2	0.6	1	0.4			1.13
Private Registered Training Organisation	3	1.2	11	3.4	4	1.6			2.0
Adult and Community Education Organisation									0.1
Other Training Provider	6	2.4	2	0.6	4	1.6			2.8
SUBTOTAL	110	44.7	158	48.9	150	61.7			68.9
Not continuing education and training									
Employed (part time)	17	6.9	34	10.5	25	10.3			6.1
Employed (full time)	40	16.3	43	13.3	30	12.3			12.9
Unemployed (seeking work)	17	6.9	8	2.5	14	5.8			4.8
Unemployed (not seeking work)*			9	2.8	2	0.8			0.9
SUBTOTAL	74	30.1	94	29.1	71	29.2			24.7
Unknown	62	25.2	71	22.0	22	9.1			6.4
TOTAL	246	100.0	323	100.0	243	100.0			100.0
Total Yr 12 February enrolment	234		321		267				

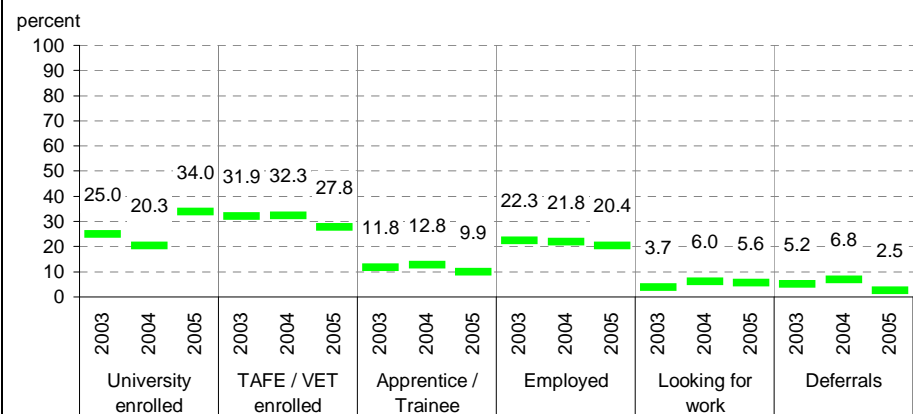
Exit destination of students who left at the end of Year 12, school vs state benchmarks^ (2003 to 2006)



On Track

Source of data: Data received from a telephone survey of Year 12 completers, conducted in April / May of the subsequent year.

Exit destination of students who left at the end of Year 12



Note: The exit destination data from On Track and CASES21 is not directly comparable for several reasons, one of which is the different bases. CASES21 data is based on all Year 12 completers, whereas On Track is based on Year 12 completers who responded to the survey. Hence the CASES21 data has an "unknown" category and the On Track data does not. Another reason is the slightly different categories, for example, On Track includes a "deferrals" category.

Notes: ^ 2006 benchmarks are not available at this stage. In the meantime, 2005 benchmarks are shown.
* includes deceased students.

Student Absence

NEW - Student Absence by FTE student

School no: 7603

School name: Berwick Secondary College

Source of data: Data retrieved electronically from CASES21 at time of rollover.

Explanation: The average (mean) number of absent days* per student. Up to 2006, the formula used to calculate the average number of absent days per student was based on student headcount. From 2006, the formula will be based on FTE** students. The new formula will provide a more accurate summary of student absence. For 2006, student absence will be provided for both student headcount and FTE student. Note that 20 absent days equates to 1 absent day per fortnight, and 10 absent days to 1 absent day per month.

Student Absence (by student headcount)

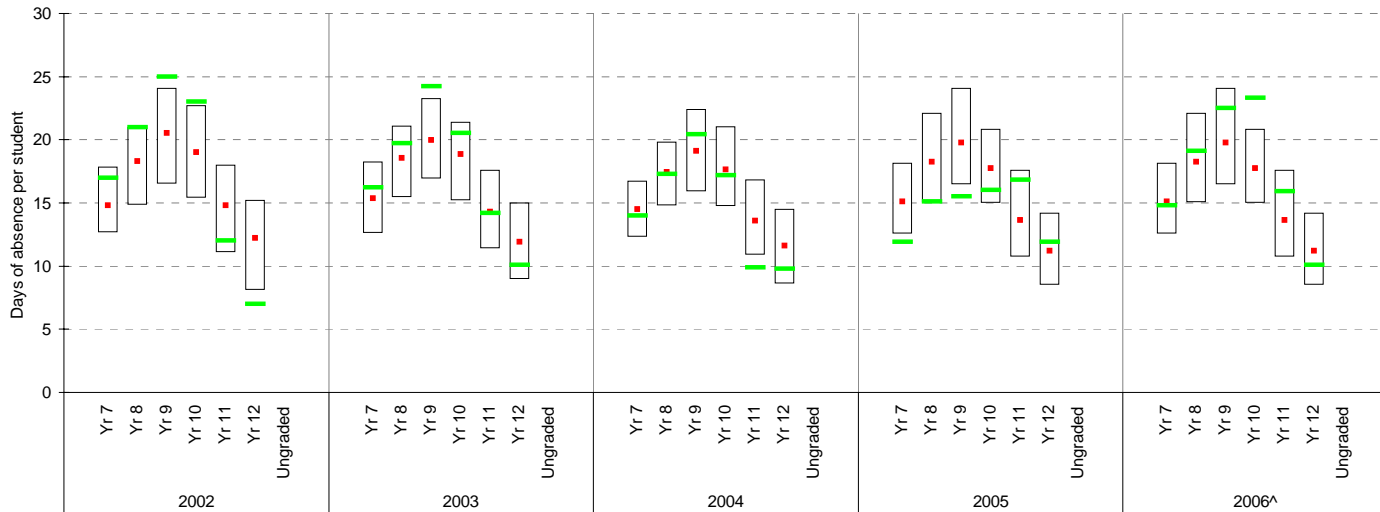
	School										2005 state benchmark^		
	2002		2003		2004		2005		2006		25th ptile	Mean	75th ptile
	Enrolments	Avg absent days / student	Enrolments	Avg absent days / student	Enrolments	Avg absent days / student	Enrolments	Avg absent days / student	Enrolments	Avg absent days / student			
Yr 7	237	17	248	16.2	238	14	257	11.9	282	14.8	12.6	15.1	18.1
Yr 8	337	21	263	19.7	256	17.3	247	15.1	263	19.1	15.1	18.3	22.1
Yr 9	343	25	370	24.2	268	20.4	251	15.5	257	22.5	16.5	19.7	24.1
Yr 10	386	23	343	20.5	353	17.2	247	16	258	23.3	15	17.7	20.8
Yr 11	289.1	12	368	14.2	325	9.9	332	16.8	250	15.9	10.7	13.6	17.6
Yr 12	225.4	7	299	10.1	354	9.8	267.1	11.9	284	10.1	8.5	11.2	14.2
Ungraded													
7-12 mean		18.5		17.7		14.5		14.6		17.5		16.2	

Student Absence (by FTE** student)

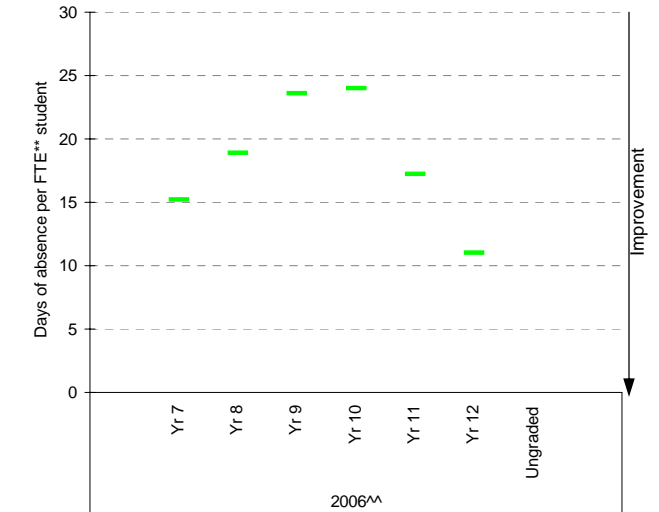
	School 2006		2006 state benchmark^^		
	Enrolments	Avg absent days / FTE** student	25th ptile	Mean	75th ptile
Yr 7	274.5	15.2			
Yr 8	249.3	18.9			
Yr 9	242.3	23.6			
Yr 10	249.6	24			
Yr 11	227.0	17.2			
Yr 12	259.1	11			
Ungraded					
7-12 mean		18.2			

Legend:
 State 75th percentile
■ State mean
 School
 State 25th percentile

Student absence (by student headcount), school plotted against state benchmarks^, 2002 to 2006



Student absence (by FTE** student), school plotted against state benchmarks^^, 2006



Notes: * Includes curriculum absences only (absence codes 200, 201, 202, 203, 205, 206, 207, 208, 209, 210, 211, 300, 401, 500, 700, 800, 804, 805, 900).
 ^ 2006 benchmarks are not available at this stage. In the meantime, 2005 benchmarks are shown.

Notes: ** FTE = Full Time Equivalent (including part-time and part-year fractions).
 ^^ 2006 benchmarks are not available at this stage.

Parent Opinion

School no: 7603

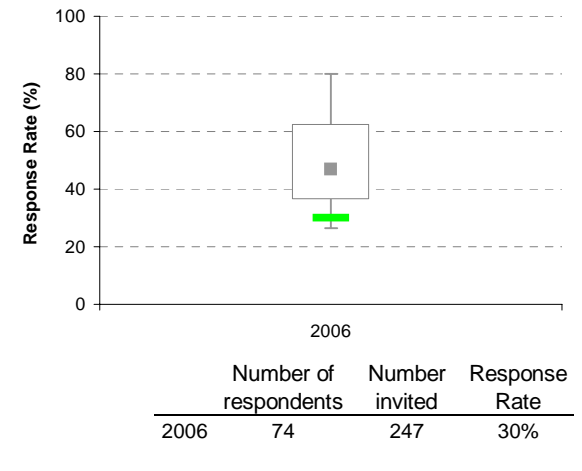
School name: Berwick Secondary College

Explanation: A self-completion questionnaire to obtain parents' opinions of the school. Parents rated a number of statements using a scale where 1=strongly disagree & 7=strongly agree. The statements were grouped into the following categories.

Source of data: Data scanned from questionnaires completed by parents.

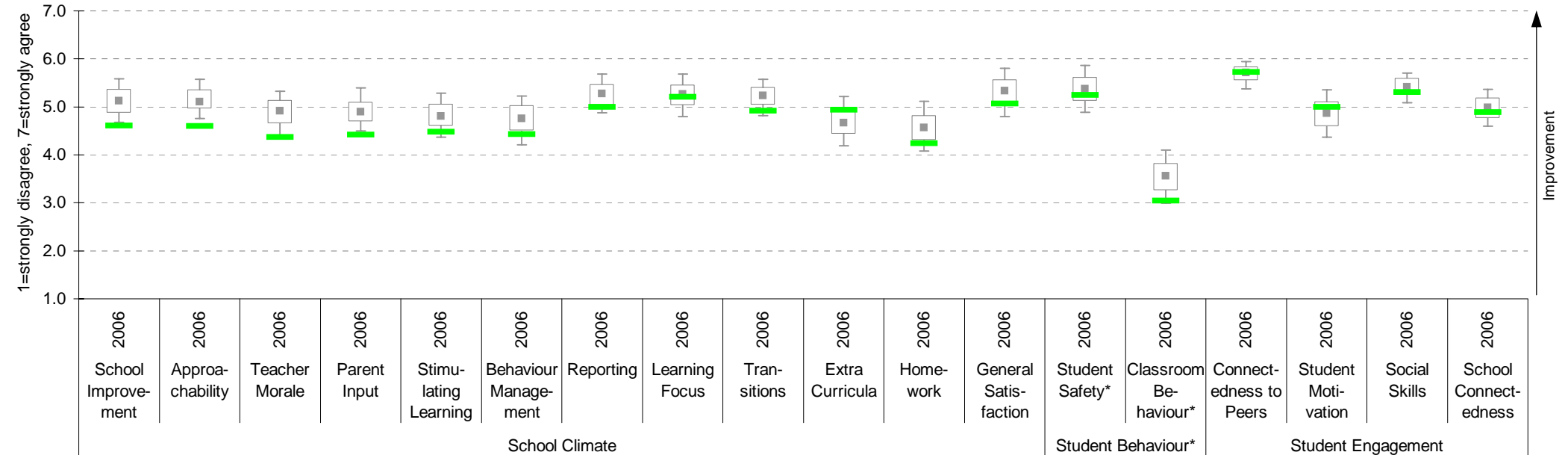
Variable	Year	School mean	State Secondary median	Variable	Year	School mean	State Secondary median
School Improvement	2006	4.61	5.13	Extra Curricula	2006	4.94	4.67
Approachability	2006	4.60	5.11	Homework	2006	4.24	4.57
Teacher Morale	2006	4.37	4.92	General Satisfaction	2006	5.07	5.33
Parent Input	2006	4.42	4.89	Student Safety*	2006	5.25	5.37
Stimulating Learning	2006	4.47	4.81	Classroom Behaviour*	2006	3.04	3.56
Behaviour Management	2006	4.43	4.76	Connectedness to Peers	2006	5.72	5.71
Reporting	2006	5.00	5.28	Student Motivation	2006	5.00	4.87
Learning Focus	2006	5.21	5.27	Social Skills	2006	5.30	5.42
Transitions	2006	4.92	5.24	School Connectedness	2006	4.89	4.99

School response rate against Secondary school distribution



Legend:
 State 90th percentile
 State 75th percentile
 State Median
 State 25th percentile
 School
 State 10th percentile

Parent Opinion, school plotted on state Secondary benchmarks 2006



Notes: ^ Benchmarks available for Primary, Secondary, Pri/Sec, Special and SDS schools.

* Parents' responses to all negatively phrased questions have been reversed for reporting purposes. Across all variables, the higher the score or percentile rank, the more positive parents' perceptions.

Staff Opinion

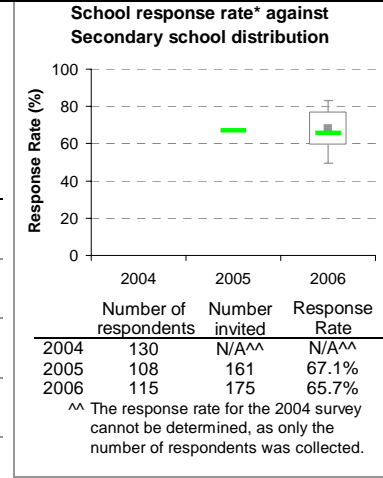
School no: 7603

School name: Berwick Secondary College

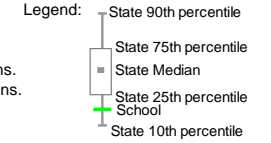
Explanation: A self-completion questionnaire to obtain the staff's opinions of the school. The survey was administered online using the School Organisational Health Questionnaire.

Source of data: Data transmitted from school staff to DoE via an online survey application.

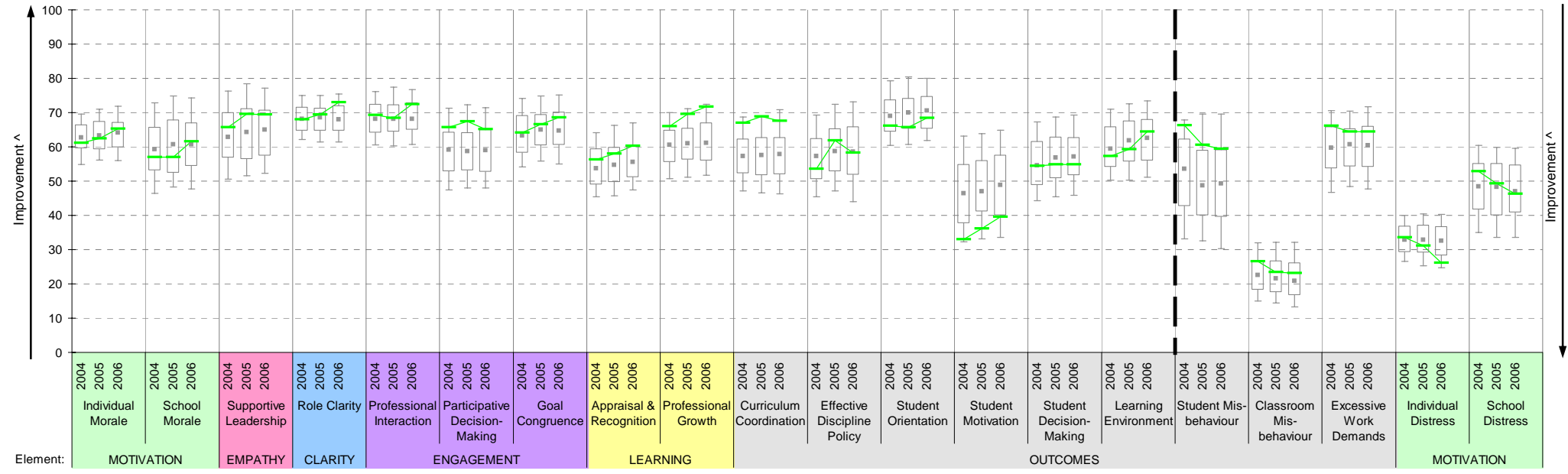
Variable					Variable					Variable				
No.	Name	Year	School mean	State Secondary median	No.	Name	Year	School mean	State Secondary median	No.	Name	Year	School mean	State Secondary median
1	Individual Morale	2004	61.2	62.8	8	Appraisal & Recognition	2004	56.3	53.8	15	Learning Environment	2004	57.3	59.4
		2005	62.5	63.3			2005	58.1	54.7			2005	59.3	61.9
		2006	65.3	64.2			2006	60.2	55.6			2006	64.5	62.6
2	School Morale	2004	57.0	59.3	9	Professional Growth	2004	66.0	60.6	16	Student Misbehaviour	2004	66.2	53.6
		2005	56.9	60.7			2005	69.5	61.0			2005	60.5	48.7
		2006	61.6	60.8			2006	71.7	61.2			2006	59.5	49.3
3	Supportive Leadership	2004	65.7	62.9	10	Curriculum Coordination	2004	67.0	57.3	17	Classroom Misbehaviour	2004	26.5	22.6
		2005	69.6	64.3			2005	68.9	57.5			2005	23.4	21.6
		2006	69.4	65.0			2006	67.6	57.8			2006	23.1	20.9
4	Role Clarity	2004	68.0	68.1	11	Effective Discipline Policy	2004	53.6	57.3	18	Excessive Work Demands	2004	66.2	59.7
		2005	69.5	68.5			2005	61.8	58.7			2005	64.4	60.7
		2006	72.9	68.0			2006	58.3	58.5			2006	64.4	60.4
5	Professional Interaction	2004	69.3	68.1	12	Student Orientation	2004	66.2	69.0	19	Individual Distress	2004	33.6	32.9
		2005	68.4	68.2			2005	65.8	70.0			2005	31.1	32.8
		2006	72.4	68.1			2006	68.5	70.5			2006	26.2	32.6
6	Participative Decision-Making	2004	65.7	59.1	13	Student Motivation	2004	33.0	46.5	20	School Distress	2004	52.8	48.4
		2005	67.5	58.7			2005	36.2	46.9			2005	49.3	48.3
		2006	65.1	59.0			2006	39.6	48.9			2006	46.3	47.1
7	Goal Congruence	2004	64.1	63.3	14	Student Decision-Making	2004	54.5	54.5					
		2005	66.5	65.0			2005	54.8	56.8					
		2006	68.5	64.7			2006	54.8	57.2					



Notes:
 * If there were 6 or less respondents, table data is not shown for confidentiality reasons.
 If there were 3 or less respondents, graph data is not shown for confidentiality reasons.
 ^ The higher the school mean, the more positive the outcome for variables 1 to 15.
 The lower the school mean, the more positive the outcome for variables 16 to 20.



Staff Opinion, school plotted on state Secondary benchmarks 2004 to 2006



Staff Sick Leave

School no: 7603

School name: Berwick Secondary College

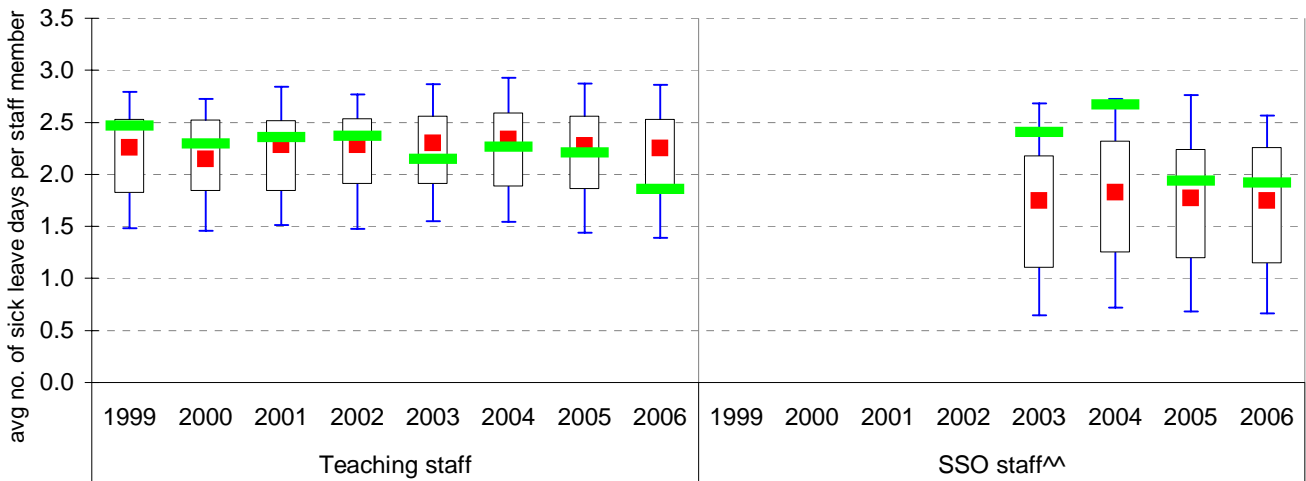
Explanation: The number of non-certificated and total sick leave days taken per staff member. A detailed explanation on how staff sick leave is calculated is provided in the Annual Reports Frequently Asked Questions page of the Standards website (<http://www.sofweb.vic.edu.au/standards/account/arepq.htm>).

Source of data: Human Resources Management System (HRMS)^.

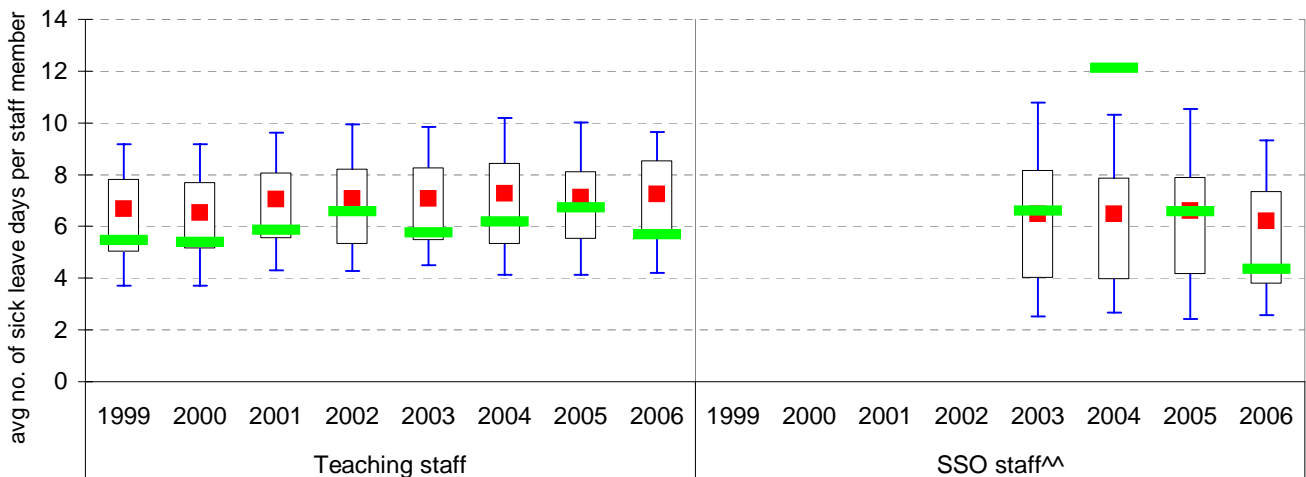
Staff Type	Non-Certificated sick leave days per staff member^								2006 bmark mean
	1999	2000	2001	2002	2003	2004	2005	2006	
Teacher	2.46	2.29	2.36	2.37	2.14	2.26	2.21	1.86	2.25
SSO^^					2.41	2.67	1.94	1.92	1.75

Staff Type	Total sick leave days per staff member^								2006 bmark mean
	1999	2000	2001	2002	2003	2004	2005	2006	
Teacher	5.46	5.39	5.86	6.58	5.77	6.17	6.74	5.70	7.24
SSO^^					6.61	12.11	6.57	4.36	6.20

NON-CERTIFICATED sick leave, 1999 to 2006



TOTAL sick leave, 1999 to 2006



Note: ^ There may be some discrepancy between the results from CASES & those from HRMS. The latter are considered to be more accurate.
^^ Data for SSO (School Services Officer) staff is only available from 2003.

Legend:

- State 90th percentile
- State 75th percentile
- State Mean
- State 25th percentile
- School
- State 10th percentile

Teaching Staff Retention

School no: 7603

School name: Berwick Secondary College

Explanation: The retention rate of teaching staff is determined by matching staff payroll records for the last pay in June of one year (Year A), to the last pay in June of the following year (Year B).

Source of data: Human Resources Management System (HRMS).

Teaching Staff*

Year A	Year B	Number of Teaching Staff in Year A	Number of Teaching Staff retained in Year B	Teaching Staff Retention Rate	Statewide Average
2005	2006	126	110	87%	87%

Of the 126 teaching service staff at Berwick Secondary College at June 2005 (including those on leave without pay), 110 or 87% were still at the school at June 2006. This figure across all Government schools was 87%.

Ongoing Teaching Staff*^

Year A	Year B	Number of Ongoing Teaching Staff in Year A	Number of Ongoing Teaching Staff retained in Year B	Ongoing Teaching Staff Retention Rate	Statewide Average
2005	2006	98	91	93%	91%

Of the 98 ongoing teaching service staff at Berwick Secondary College at June 2005 (including those on leave without pay), 91 or 93% were still at the school at June 2006. This figure across all Government schools was 91%.

Note: * Teaching staff includes Principal class, Teacher class and Instructor class. Teaching staff employed as visiting teachers, guidance officers, curriculum consultants, etc. are excluded as they are not charged to a particular school.

^ Not including fixed term staff, except for where staff had changed from ongoing in Year A to fixed term in Year B.

Bank Balances

School no: 7603

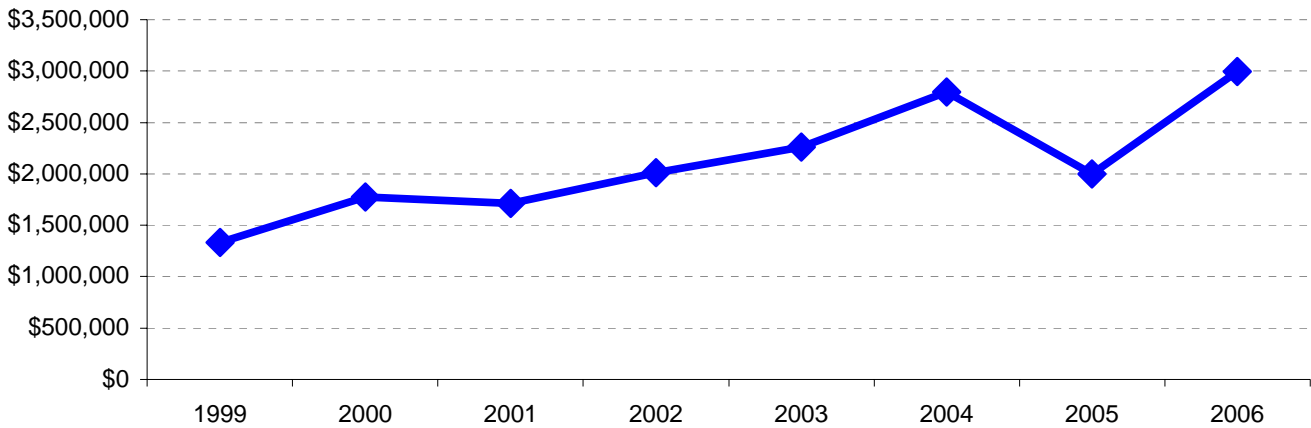
School name: Berwick Secondary College

Explanation: Account balance figures include official and investment accounts, and are calculated by taking the opening balance at 1st January plus the total receipts at 31st December less total payments at 31st December.

Account Balances (Official plus Investment Accounts)

1999	\$1,330,921	2003	\$2,260,372
2000	\$1,775,271	2004	\$2,797,702
2001	\$1,710,236	2005	\$2,002,124
2002	\$2,009,606	2006	\$2,992,497

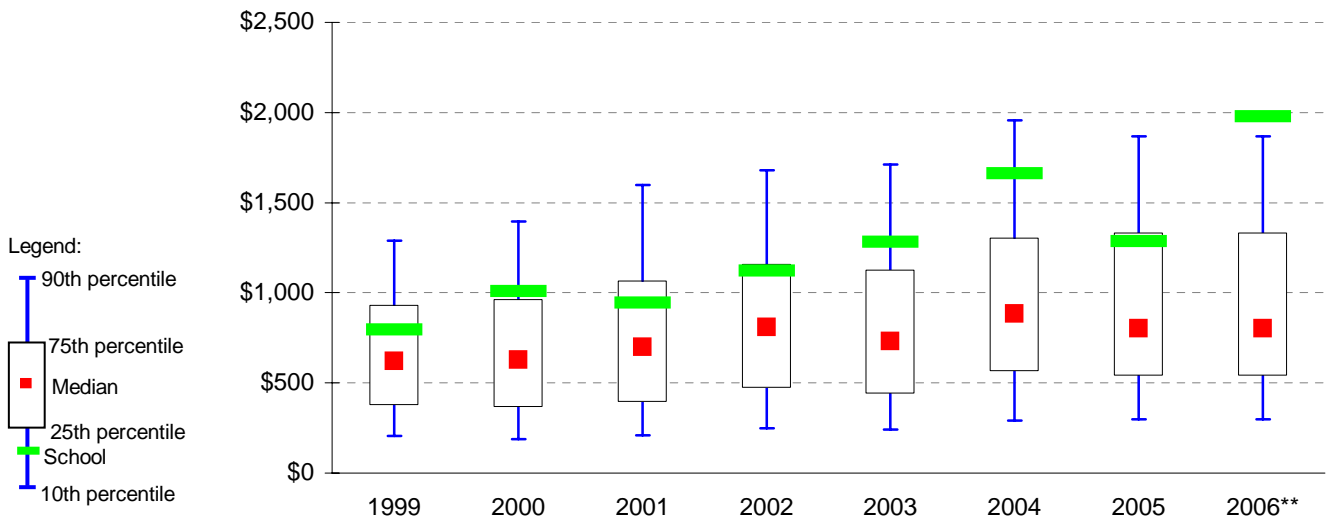
Account Balances, 1999 to 2006



Account Balances (Official plus Investment Accounts) per student^

1999	\$795	2003	\$1,284
2000	\$1,007	2004	\$1,661
2001	\$946	2005	\$1,284
2002	\$1,121	2006	\$1,978

School account balances per student enrolled in August census plotted on state Secondary benchmarks*, 1999 to 2006



Notes:

^ The account balance per student has been calculated to enable some comparison to be made between schools.

* Benchmarks for primary, secondary, pri/sec, SDS, special and language schools.

** 2006 benchmarks are not available at this stage. In the meantime, 2005 benchmarks are shown.