

Berwick Secondary College (7603)

2008 School Level Report

Please check the data in this report. If, after comparing it with your own records, you deem it to be incorrect or incomplete, follow the directions on the following website:

- <http://www.education.vic.gov.au/management/schoolimprovement/performancecd/>
then select 'School Performance Reports'.

Contents

	Page No.
Privacy	3
SFO Density and LBOTE	4
Teacher Judgments against the VELs	5-13
NAPLAN - Reading	14
- Writing	15
- Numeracy	16
AIM - Reading	17
- Mathematics	18
VCE	19-24
VET	25
VCAL	26
Teacher Assessment of Student Progress (PSD students)	27-28
Enrolment	29
Student Retention - Apparent	30
- Real	31
Exit Destination	32-35
Student Absence	36
Opinion Surveys - Parent	37
- Staff	38
Performance & Development Culture	39
Staff Sick Leave	40
Teaching Staff Retention	41
Bank Balances	42

Privacy

When reporting on the school's performance to the school community, care must be taken to avoid the disclosure of information that can directly or indirectly identify an individual. This may be a particular issue when reporting on the achievement of specific cohorts of students or the opinions of staff where there are small numbers.

In situations where privacy cannot be assured, schools may wish to report on the mean result or provide a written comment on school, year level or cohort performance.

Where the School Level Report is provided to school council members as part of any annual reporting process, or used for discussion on a school's performance, such as in consultation with the school community in the school self-evaluation process, it is important to remind school community members of their duty to only use this information for the purpose it was provided, and that the material must be kept confidential.

It is important to note that information that identifies an individual or can be used with other readily available information to identify a person is now protected by the *Information Privacy Act 2000* (<http://www.education.vic.gov.au/about/deptpolicies/informationprivacy.htm>).

SFO Density and LBOTE

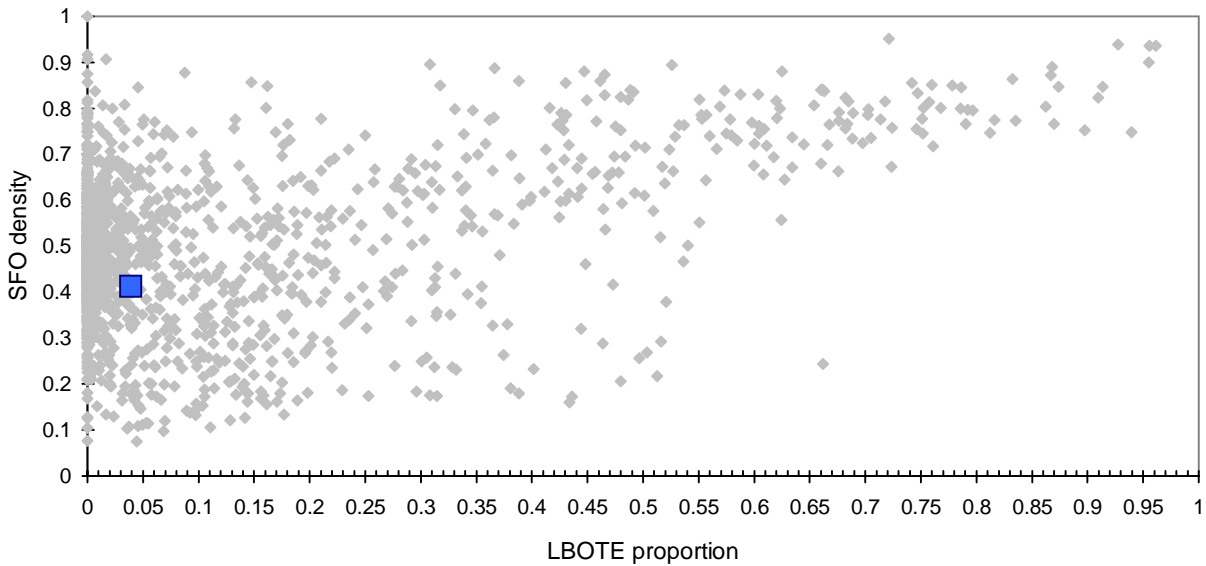
School no: 7603

School name: Berwick Secondary College

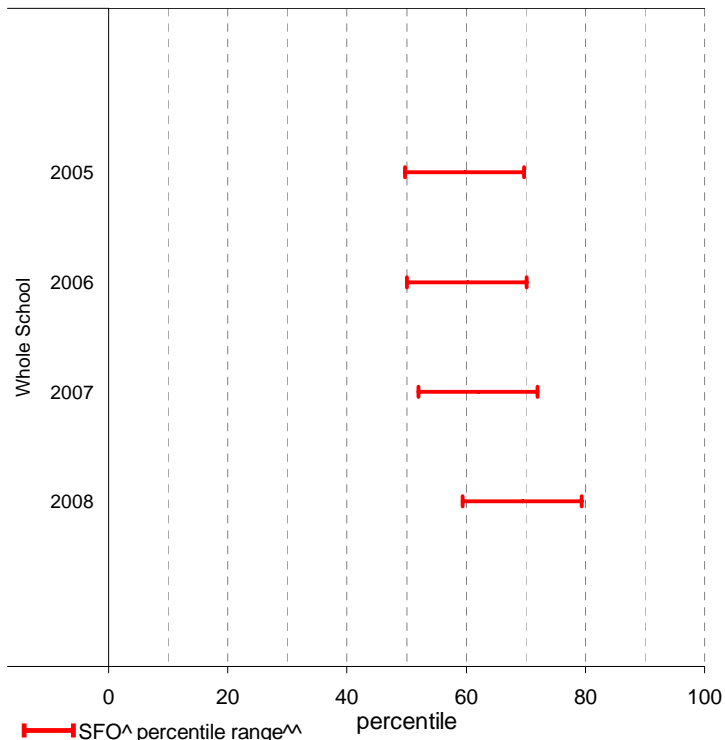
Explanation: The chart below plots the school's 2008 SFO (Student Family Occupation) density[^] and LBOTE (Language Background Other Than English) proportion* against that of all government schools. This school is highlighted as a square on the chart.

	2001	2002	2003	2004	2005	2006	2007	2008
SFO density [^] :					0.44	0.43	0.44	0.41
LBOTE proportion*:	0.03	0.03	0.04	0.05	0.04	0.04	0.03	0.04

School's 2008 SFO density and LBOTE proportion against that of all government schools



School's SFO[^] percentile range^{^^} over time



Notes: [^] The higher the SFO density, the lower the SFO percentile and the lower the socio-economic status (SES).
^{^^} The school's SFO percentile range shows the 20% of schools with an SFO Density most like this school.
* From 2007, a student is LBOTE if either the student or one parent/guardian speaks a language other than English at home. Prior to 2007, a student is LBOTE if the student or one of the parents was born in a non-English speaking country.

Teacher Judgments against the VELS - Year levels 7-10 combined

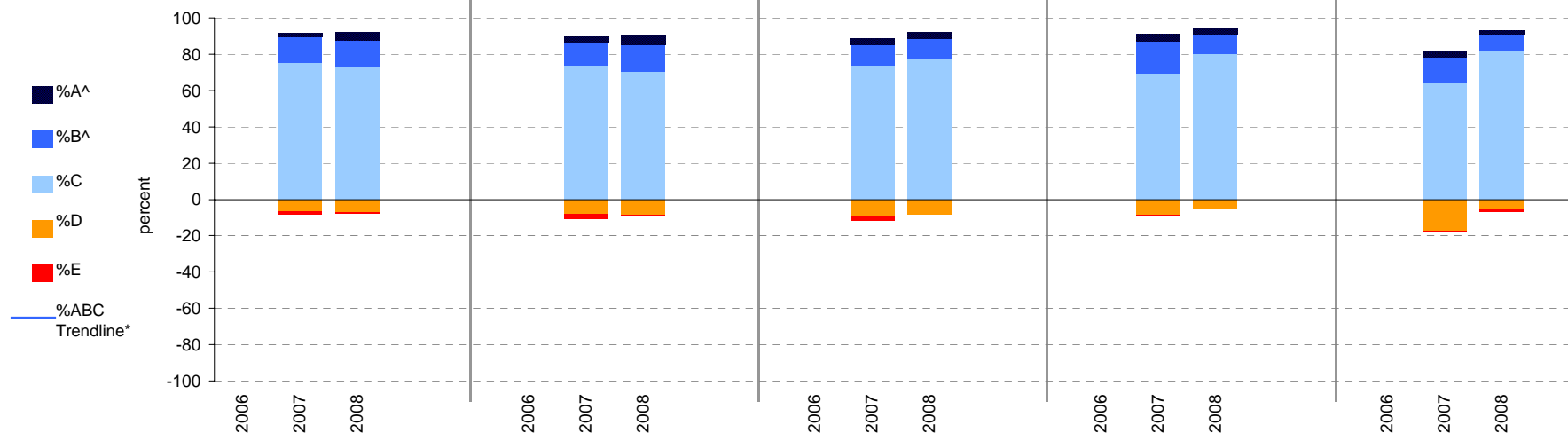
School no: 7603

School name: Berwick Secondary College

Source of data: Data retrieved electronically from CASES21.

Explanation: Teacher judgments of student achievement against the VELS.

Year Levels:	Reading						Writing					Speaking & Listening					Measurement, Chance & Data					Structure									
	total students	% A^	% B^	% C	% D	% E	total students	% A^	% B^	% C	% D	% E	total students	% A^	% B^	% C	% D	% E	total students	% A^	% B^	% C	% D	% E	total students	% A^	% B^	% C	% D	% E	
7-10 (combined)	2006						2006						2006						2006						2006						
	2007	1030	2	14	75	7	2	1030	3	13	74	8	3	1025	3	11	74	9	2	1026	4	18	69	8	0	1026	3	14	65	17	1
	2008	1075	4	15	73	7	1	1075	5	15	70	9	1	1075	4	11	78	8	0	1075	4	10	80	5	0	1074	2	9	82	5	1



Notes: * The school trendline is being trialled. It is only plotted when there is data for each calendar year.
 ^ The cutoff between grades A and B changed in 2007. Further information is available on the following website:
<http://www.education.vic.gov.au/studentlearning/studentreports/schools/whatsnew.htm>

Teacher Judgments against the VELS - English (secondary)

School no: 7603

School name: Berwick Secondary College

Source of data: Data retrieved electronically from CASES21.

Explanation: Teacher judgments of student achievement against the VELS.

Notes: * The school trendline is only plotted when there is data for each calendar year.

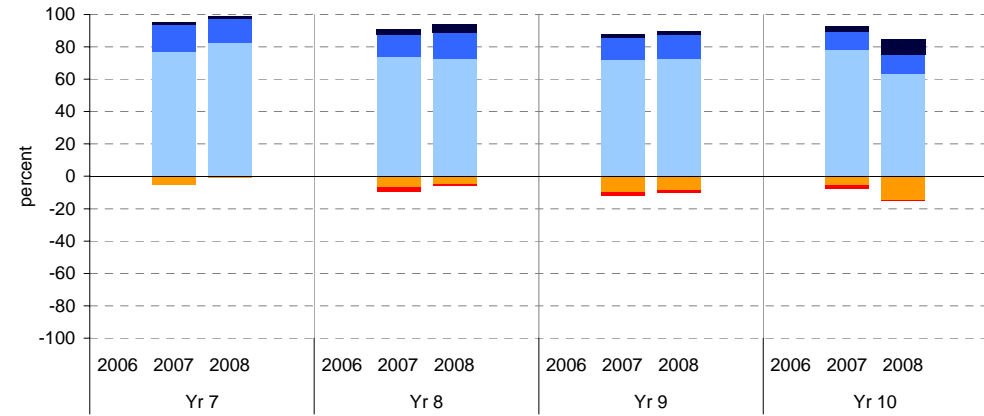
** In 2006, approx. 850 schools assessed their students against the 0.25 VELS scale. 2006 benchmarks are therefore based on a subset of schools.

^ The cutoff between grades A and B changed in 2007. Further information is available on the following website: <http://www.education.vic.gov.au/studentlearning/studentreports/schools/whatsnew.htm>.

^^ 2008 benchmarks and percentiles will be calculated in August, when data from all schools has been submitted.

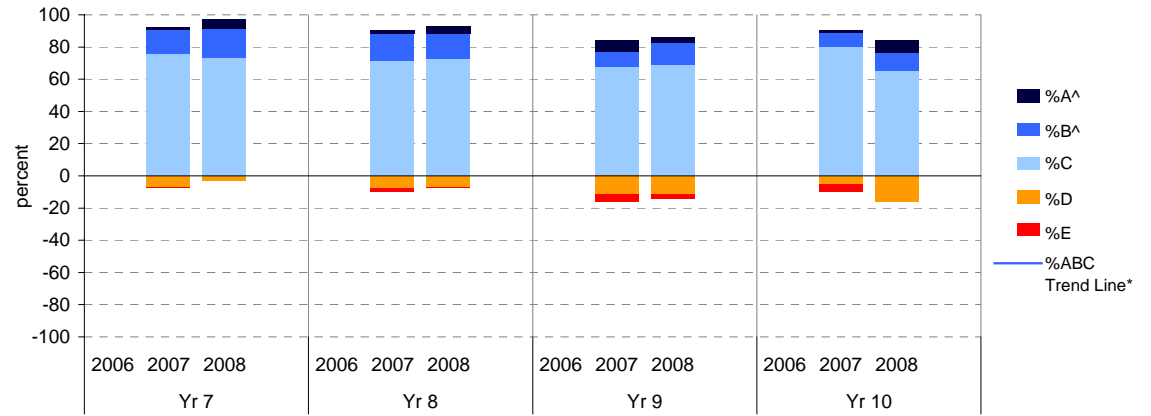
Reading

	total students	% of students by grade					Mean Score		total students	total students	% of students by grade					Mean Score		
		A^	B^	C	D	E	School	State**			A^	B^	C	D	E	School	State**	
Yr 7	2006						4.32	4.32	2006						5.26	5.26		
	2007	306	1	17	77	5	0	4.47	4.39	2007	249	2	13	72	10	2	5.40	5.36
	2008	259	2	14	83	1	0	4.51		2008	270	2	15	73	9	1	5.45	
Yr 8	2006						4.78		2006						5.77			
	2007	272	3	14	74	7	3	4.94	4.85	2007	203	3	11	78	5	2	5.95	5.85
	2008	329	5	16	73	5	1	5.00		2008	217	10	12	64	15	0	5.96	



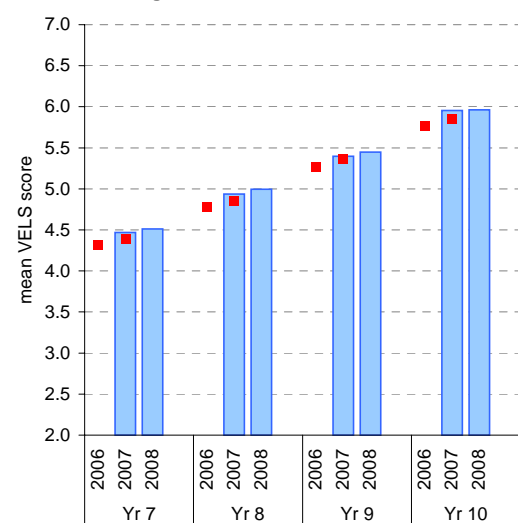
Writing

	total students	% of students by grade					Mean Score		total students	total students	% of students by grade					Mean Score		
		A^	B^	C	D	E	School	State**			A^	B^	C	D	E	School	State**	
Yr 7	2006						4.28	4.28	2006						5.25	5.25		
	2007	306	1	15	75	7	1	4.44	4.36	2007	249	6	9	68	11	5	5.37	5.34
	2008	259	6	18	73	3	0	4.53		2008	271	3	14	69	11	3	5.42	
Yr 8	2006						4.75		2006						5.75			
	2007	272	1	17	71	8	2	4.93	4.83	2007	203	1	9	80	5	4	5.90	5.83
	2008	329	4	16	72	7	1	4.99		2008	216	8	11	65	16	0	5.95	

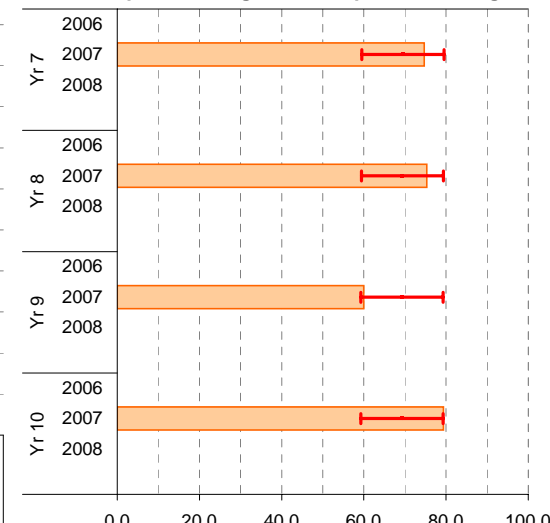


Reading

School Mean against State Mean^^

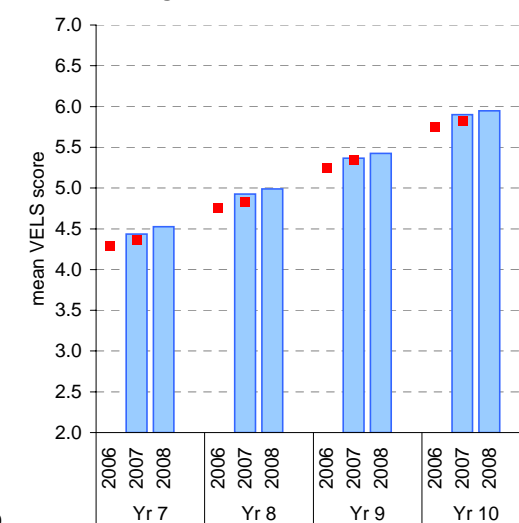


School Mean as percentile against SFO percentile range^^

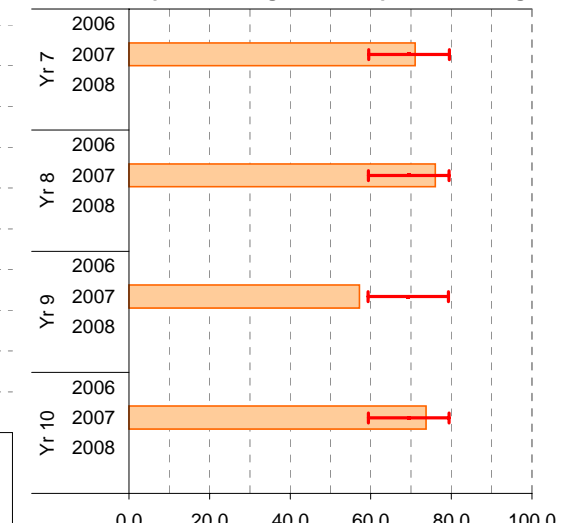


Writing

School Mean against State Mean^^



School Mean as percentile against SFO percentile range^^



School Mean State Mean**

School Mean as percentile SFO Percentile range

School Mean State Mean**

School Mean as percentile SFO Percentile range

Teacher Judgments against the VELS - English (secondary)

School no: 7603

School name: Berwick Secondary College

Source of data: Data retrieved electronically from CASES21.

Explanation: Teacher judgments of student achievement against the VELS.

Notes: * The school trendline is only plotted when there is data for each calendar year.

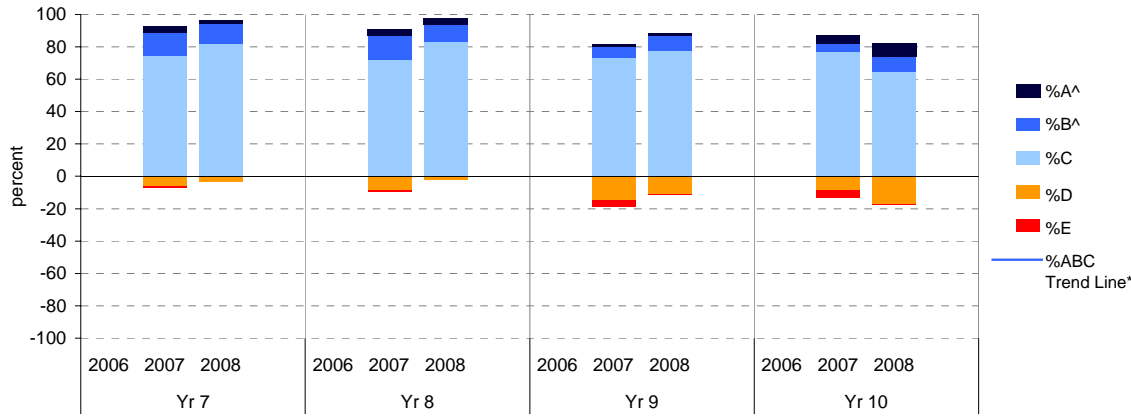
** In 2006, approx. 850 schools assessed their students against the 0.25 VELS scale. 2006 benchmarks are therefore based on a subset of schools.

^ The cutoff between grades A and B changed in 2007. Further information is available on the following website: <http://www.education.vic.gov.au/studentlearning/studentreports/schools/whatsnew.htm>.

^^ 2008 benchmarks and percentiles will be calculated in August, when data from all schools has been submitted.

Speaking and Listening

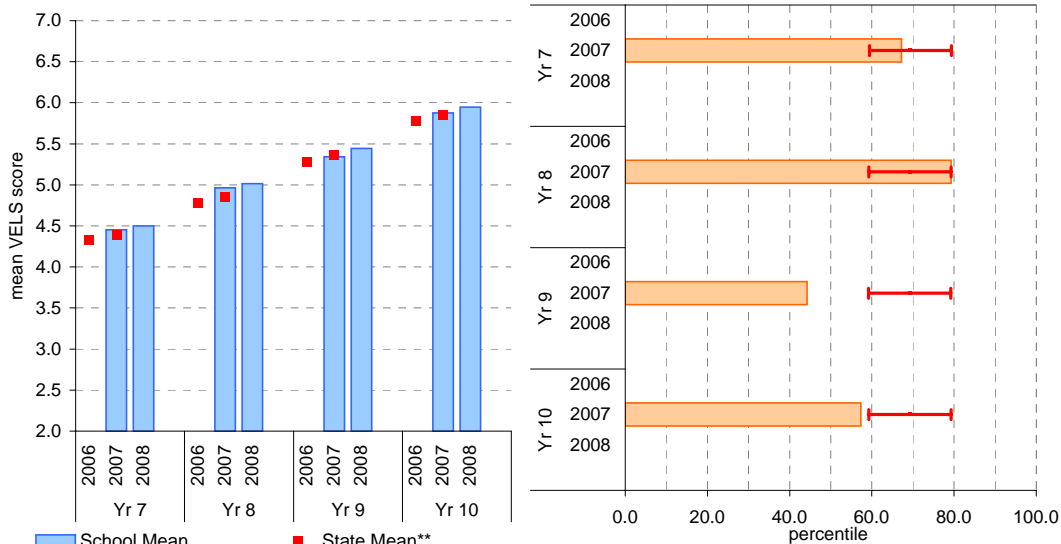
	total students	% of students by grade					Mean Score		total students		% of students by grade					Mean Score		
		A^	B^	C	D	E	School	State**			A^	B^	C	D	E	School	State**	
Yr 7	2006							4.33	2006							5.28		
	2007	306	4	15	75	6	1	4.45	4.39	2007	249	1	7	73	15	4	5.34	5.36
	2008	259	2	12	82	3	0	4.50		2008	270	2	9	78	11	0	5.44	
Yr 8	2006							4.79							5.78			
	2007	271	4	15	72	8	1	4.96	4.85	2007	199	5	5	77	9	5	5.88	5.85
	2008	329	4	11	83	2	0	5.01		2008	217	8	10	65	18	0	5.95	



Speaking and Listening

School Mean against State Mean^^

School Mean as percentile against SFO percentile range^^



■ School Mean
■ State Mean**
— School Trendline*

■ School Mean as percentile
— SFO Percentile range

Teacher Judgments against the VELS - Mathematics (secondary)

School no: 7603

School name: Berwick Secondary College

Source of data: Data retrieved electronically from CASES21.

Explanation: Teacher judgments of student achievement against the VELS.

Notes: * The school trendline is only plotted when there is data for each calendar year.

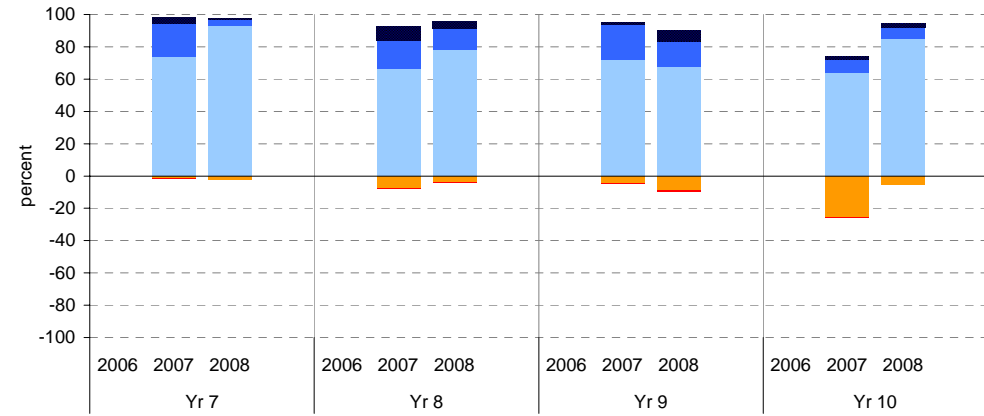
** In 2006, approx. 850 schools assessed their students against the 0.25 VELS scale. 2006 benchmarks are therefore based on a subset of schools.

^ The cutoff between grades A and B changed in 2007. Further information is available on the following website: <http://www.education.vic.gov.au/studentlearning/studentreports/schools/whatsnew.htm>.

^^ 2008 benchmarks and percentiles will be calculated in August, when data from all schools has been submitted.

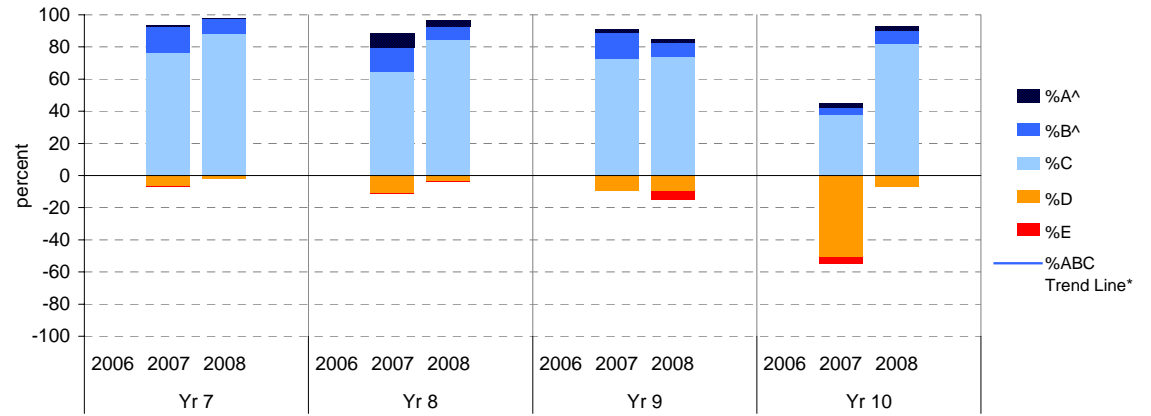
Measurement, Chance and Data

	total students	% of students by grade					Mean Score			total students	% of students by grade					Mean Score		
		A^	B^	C	D	E	School	State**			A^	B^	C	D	E	School	State**	
Yr 7	2006						4.31	4.31		2006						5.24	5.24	
	2007	306	4	21	74	2	0	4.53	4.40	2007	248	1	22	72	4	0	5.51	5.34
	2008	259	1	4	93	2	0	4.47		2008	270	7	16	68	9	1	5.48	
Yr 8	2006						4.78			2006						5.66		
	2007	270	8	18	66	7	0	5.00	4.83	2007	202	2	8	64	25	0	5.86	5.76
	2008	328	5	13	78	4	0	5.00		2008	218	3	7	85	6	0	5.96	



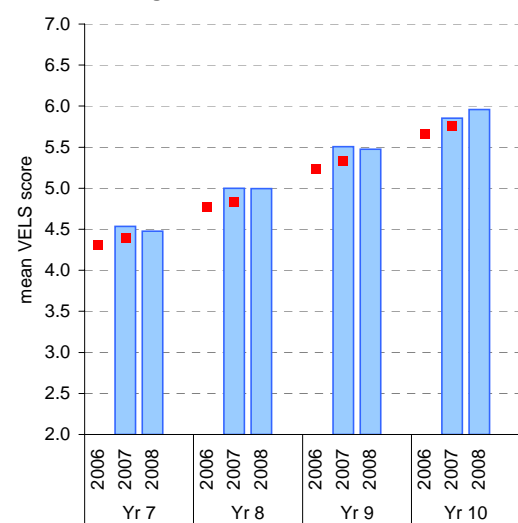
Structure

	total students	% of students by grade					Mean Score			total students	% of students by grade					Mean Score		
		A^	B^	C	D	E	School	State**			A^	B^	C	D	E	School	State**	
Yr 7	2006						4.30	4.30		2006						5.21	5.21	
	2007	306	0	17	76	7	0	4.48	4.39	2007	248	2	17	73	9	0	5.46	5.29
	2008	259	0	9	88	2	0	4.48		2008	269	2	9	74	10	5	5.37	
Yr 8	2006						4.74			2006						5.60		
	2007	270	9	15	64	11	0	4.98	4.82	2007	202	2	4	38	51	4	5.64	5.72
	2008	328	4	8	84	3	0	4.99		2008	218	3	8	82	7	0	5.93	

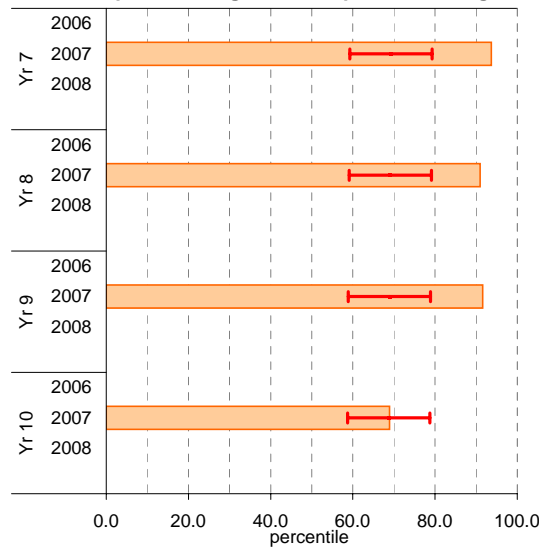


Measurement, Chance and Data

School Mean against State Mean^^



School Mean as percentile against SFO percentile range^^

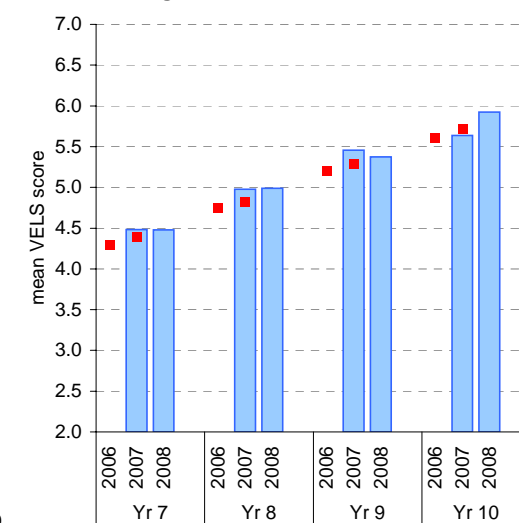


Legend: School Mean (blue bar), State Mean** (red square)

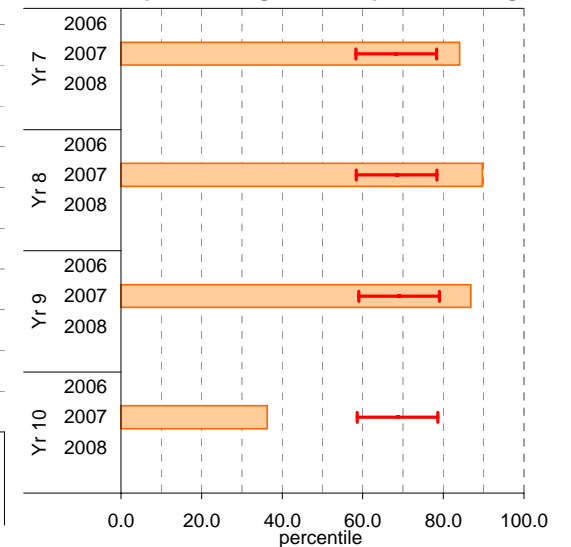
Legend: School Mean as percentile (orange bar), SFO Percentile range (red line with caps)

Structure

School Mean against State Mean^^



School Mean as percentile against SFO percentile range^^



Legend: School Mean (blue bar), State Mean** (red square)

Legend: School Mean as percentile (orange bar), SFO Percentile range (red line with caps)

Teacher Judgments against the VELS - English (secondary)

School no: 7603
School name: Berwick Secondary College
Source of data: Data retrieved electronically from CASES21.
Explanation: Teacher judgments of student achievement against the VELS.

Reading

Year Level	Year	Total ¹	Assessed ²	Level 1			Level 2			Level 3			Level 4			Level 5			Level 6			Level 6E			School mean	State mean ³	Difference between school and state mean ⁴													
				0.00	0.50	1.00	1.25	1.50	1.75	2.00	2.25	2.50	2.75	3.00	3.25	3.50	3.75	4.00	4.25	4.50	4.75	5.00	5.25	5.50				5.75	6.00	6.25	6.50	6.75								
yr7	2008	259	259										3				25	190	37	4														4.51						
yr7	2007	307	306									1	15				61	174	52	3														4.47	4.39	0.08				
yr8	2008	329	329										4				3	13	40	199		54	16											5.00						
yr7	2006																																			4.32				
yr8	2007	272	272									1		6			6	13	45	156		37	8											4.94	4.85	0.09				
yr9	2008	274	270														4	4	20		38	158	41	5										5.45						
yr7	2005																																			4.78				
yr8	2006																																				4.78			
yr9	2007	249	249										1		1	4	6	18		65	115	33	6											5.40	5.36	0.04				
yr10	2008	218	217													1				5	27	32	106		25	14	7							5.96						
yr8	2005																																				5.26			
yr9	2006																																				5.26			
yr10	2007	203	203																4	7	4	28	131		23	6									5.95	5.85	0.11			
yr9	2005																																					5.77		
yr10	2006																																					5.77		
yr10	2005																																							

shading indicates a 'C' grade (at the expected standard) on the VELS scale.

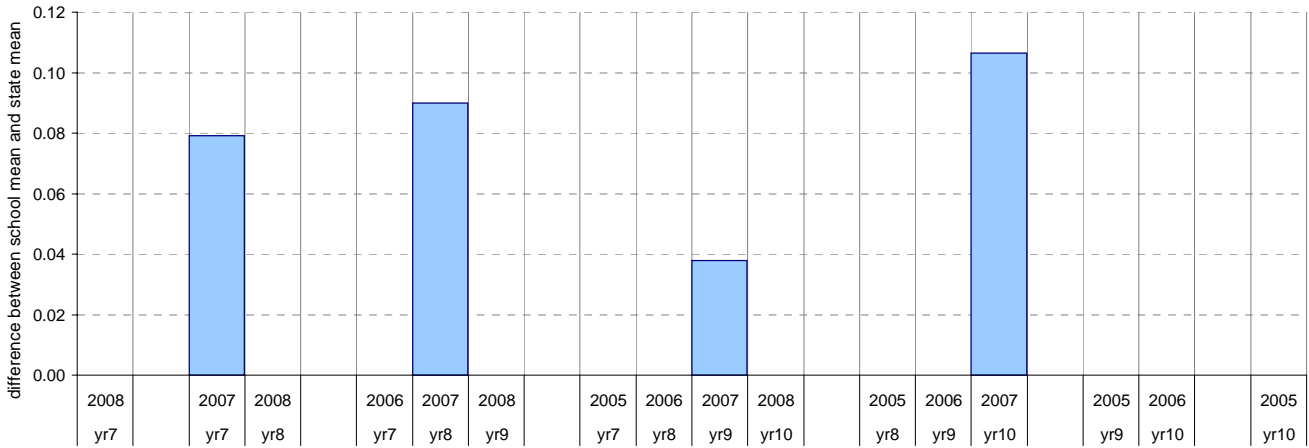
¹ The total number of students eligible to be assessed. This figure will typically match, or be very close to, the Year Level enrolment.

² The number of students assessed against the VELS. The difference between this figure and the total (1) should be accounted for by students assessed against Individual Learning Plans and/or the ESL companion in the case of English.

^{*} In 2006, approx. 850 schools assessed their students against the 0.25 VELS scale. 2006 benchmarks are therefore based on a subset of schools.

[^] 2008 benchmarks will be calculated in August, when data from all schools has been submitted.

Difference between school mean and state mean⁴, by cohort group



Teacher Judgments against the VELS - English (secondary)

School no: 7603
School name: Berwick Secondary College
Source of data: Data retrieved electronically from CASES21.
Explanation: Teacher judgments of student achievement against the VELS.

Writing

Year Level	Year	Total ¹	Assessed ²	Level 1			Level 2			Level 3			Level 4			Level 5			Level 6			Level 6E			School mean	State mean ³	Difference between school and state mean ⁴							
				0.00	0.50	1.00	1.25	1.50	1.75	2.00	2.25	2.50	2.75	3.00	3.25	3.50	3.75	4.00	4.25	4.50	4.75	5.00	5.25	5.50				5.75	6.00	6.25	6.50	6.75		
yr7	2008	259	259										7				37	153	47	13	2								4.53					
yr7	2007	307	306										2	3	19		78	153	47	4									4.44	4.36	0.08			
yr8	2008	329	329										2				6	16	39	199	53	14							4.99					
yr7	2006																													4.28				
yr8	2007	272	272							1			5				7	14	58	136	47	3	1						4.93	4.83	0.10			
yr9	2008	274	271														1	6	1	30	45	142	38	8					5.42					
yr7	2005																																	
yr8	2006																														4.75			
yr9	2007	249	249										2				3	7	4	24	73	97	23	15	1				5.37	5.34	0.03			
yr10	2008	218	216																		4	30	30	111	24	17				5.95				
yr8	2005																																	
yr9	2006																														5.25			
yr10	2007	203	203															4	5		3	8	37	126	18	2				5.90	5.83	0.08		
yr9	2005																																	
yr10	2006																															5.75		
yr10	2005																																	

shading indicates a 'C' grade (at the expected standard) on the VELS scale.

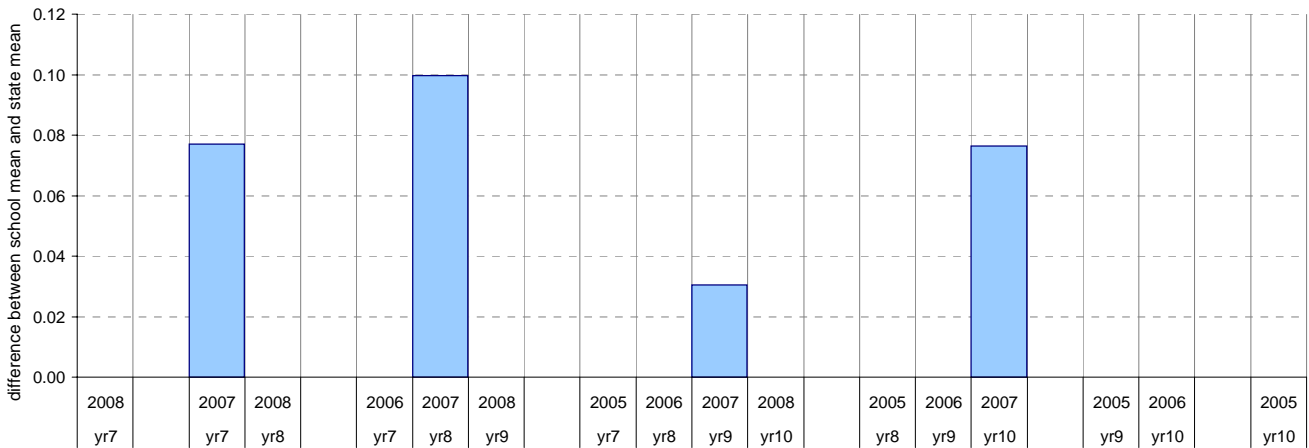
¹ The total number of students eligible to be assessed. This figure will typically match, or be very close to, the Year Level enrolment.

² The number of students assessed against the VELS. The difference between this figure and the total (1) should be accounted for by students assessed against Individual Learning Plans and/or the ESL companion in the case of English.

* In 2006, approx. 850 schools assessed their students against the 0.25 VELS scale. 2006 benchmarks are therefore based on a subset of schools.

⁴ 2008 benchmarks will be calculated in August, when data from all schools has been submitted.

Difference between school mean and state mean⁴, by cohort group



Teacher Judgments against the VELS - English (secondary)

School no: 7603
School name: Berwick Secondary College
Source of data: Data retrieved electronically from CASES21.
Explanation: Teacher judgments of student achievement against the VELS.

Speaking and Listening

Year Level	Year	Total ¹	Assessed ²	Level 1			Level 2			Level 3			Level 4			Level 5			Level 6			Level 6E			School mean	State mean ³	Difference between school and state mean ⁴					
				0.00	0.50	1.00	1.25	1.50	1.75	2.00	2.25	2.50	2.75	3.00	3.25	3.50	3.75	4.00	4.25	4.50	4.75	5.00	5.25	5.50				5.75	6.00	6.25	6.50	6.75
yr7	2008	259	259										9				22	191	32	5									4.50			
yr7	2007	307	306										3	6	13		69	159	45	11								4.45	4.39	0.06		
yr8	2008	329	329														2	6	25	248		36	12					5.01				
yr7	2006																													4.33		
yr8	2007	272	271									1				1	4	19	40	155		41	10					4.96	4.85	0.11		
yr9	2008	274	270														1		30		30	180	24	5				5.44				
yr7	2005																															
yr8	2006																													4.79		
yr9	2007	249	249										3			3	4	3	34		51	131	18	2			5.34	5.36	-0.02			
yr10	2008	218	217															1		3	35	22	118		21	12	5	5.95				
yr8	2005																															
yr9	2006																													5.28		
yr10	2007	203	199														1	6	2		9	8	40	113		10	10	5.88	5.85	0.03		
yr9	2005																															
yr10	2006																													5.78		
yr10	2005																															

shading indicates a 'C' grade (at the expected standard) on the VELS scale.

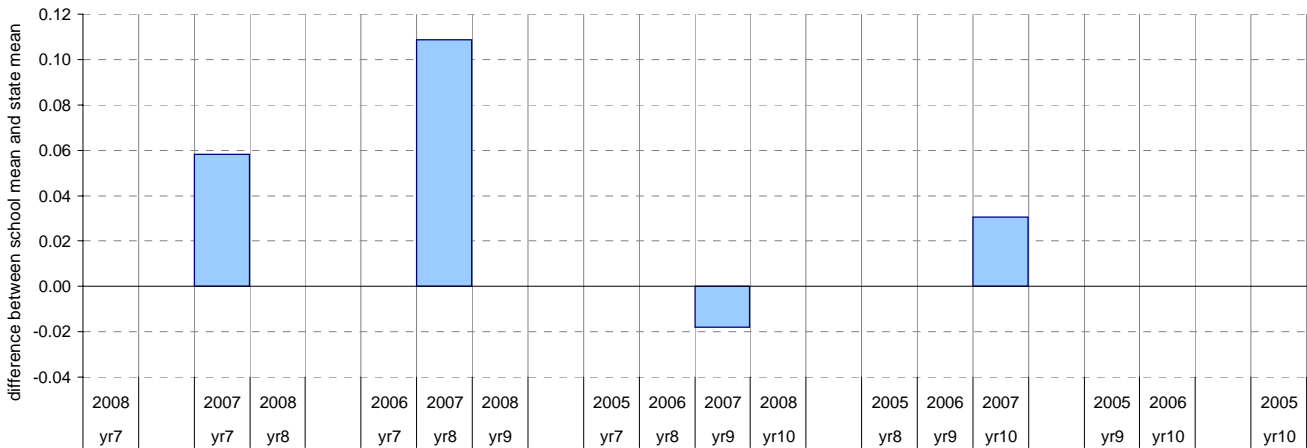
¹ The total number of students eligible to be assessed. This figure will typically match, or be very close to, the Year Level enrolment.

² The number of students assessed against the VELS. The difference between this figure and the total (1) should be accounted for by students assessed against Individual Learning Plans and/or the ESL companion in the case of English.

* In 2006, approx. 850 schools assessed their students against the 0.25 VELS scale. 2006 benchmarks are therefore based on a subset of schools.

⁴ 2008 benchmarks will be calculated in August, when data from all schools has been submitted.

Difference between school mean and state mean⁴, by cohort group



Teacher Judgments against the VELS - Mathematics (secondary)

School no: 7603
School name: Berwick Secondary College
Source of data: Data retrieved electronically from CASES21.
Explanation: Teacher judgments of student achievement against the VELS.

Measurement, Chance and Data

Year Level	Year	Total ¹	Assessed ²	Level 1			Level 2			Level 3			Level 4			Level 5			Level 6			Level 6E			School mean	State mean ³	Difference between school and state mean ⁴					
				0.00	0.50	1.00	1.25	1.50	1.75	2.00	2.25	2.50	2.75	3.00	3.25	3.50	3.75	4.00	4.25	4.50	4.75	5.00	5.25	5.50				5.75	6.00	6.25	6.50	6.75
yr7	2008	259	259											6	29	211	11	2										4.47				
yr7	2007	307	306										1	1	4	31	195	63	10			1						4.53	4.40	0.14		
yr8	2008	329	328										1		5	8	43	213			43	15						5.00				
yr7	2006																													4.31		
yr8	2007	271	270										1		6	14	42	137			48	22						5.00	4.83	0.17		
yr9	2008	276	270										1		2	14	9			30	153	42	19						5.48			
yr7	2005																															
yr8	2006																													4.78		
yr9	2007	249	248												1	1	10			30	148	55	2		1					5.51	5.34	0.17
yr10	2008	218	218																	12	43	142		15	3	3				5.96		
yr8	2005																															
yr9	2006																													5.24		
yr10	2007	203	202																1	7	44	29	100		17	4				5.86	5.76	0.09
yr9	2005																															
yr10	2006																													5.66		
yr10	2005																															

shading indicates a 'C' grade (at the expected standard) on the VELS scale.

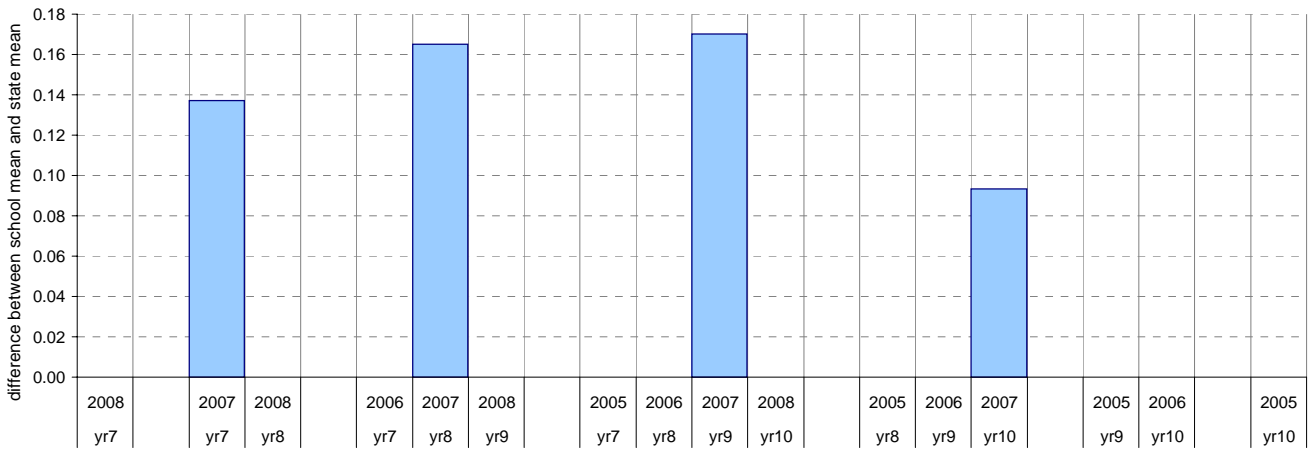
¹ The total number of students eligible to be assessed. This figure will typically match, or be very close to, the Year Level enrolment.

² The number of students assessed against the VELS. The difference between this figure and the total (1) should be accounted for by students assessed against Individual Learning Plans and/or the ESL companion in the case of English.

* In 2006, approx. 850 schools assessed their students against the 0.25 VELS scale. 2006 benchmarks are therefore based on a subset of schools.

⁴ 2008 benchmarks will be calculated in August, when data from all schools has been submitted.

Difference between school mean and state mean⁴, by cohort group



NAPLAN Year 7 and 9: Reading

School no: 7603

School name: Berwick Secondary College

Source of data: Victorian Curriculum and Assessment Authority.

Explanation: The National Assessment Program - Literacy and Numeracy (NAPLAN) is conducted each year for students in Years 3, 5, 7 and 9. For more detailed NAPLAN data, refer to the NAPLAN Data Service website at <http://naplands.vcaa.vic.edu.au>. A reference guide for analysing NAPLAN data is available at <http://www.vcaa.vic.edu.au/vcaa/prep10/naplan/schools/analysingnaplandata.pdf>.

Notes: * % student participation = (students who participated in NAPLAN / February enrolments) * 100

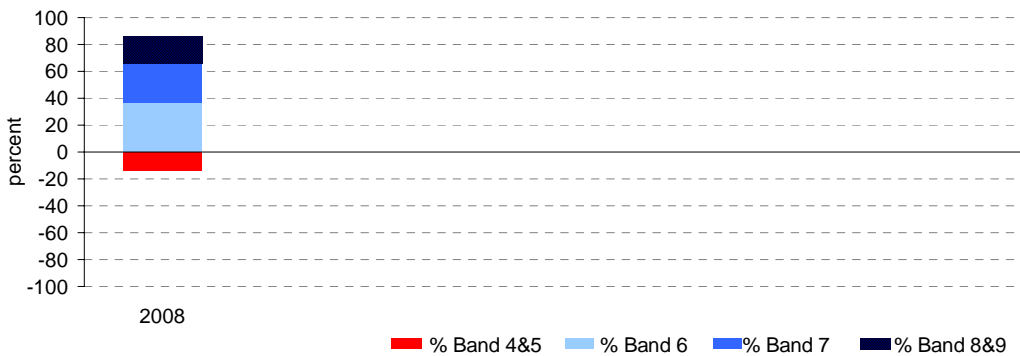
Year 7

	student participation		Percent of students by NAP Band						Mean Scaled Score	
	(n)	(%)*	Band 4	Band 5	Band 6	Band 7	Band 8	Band 9	School	State
2008	272	93	3	11	37	29	13	7	537.2	531.1

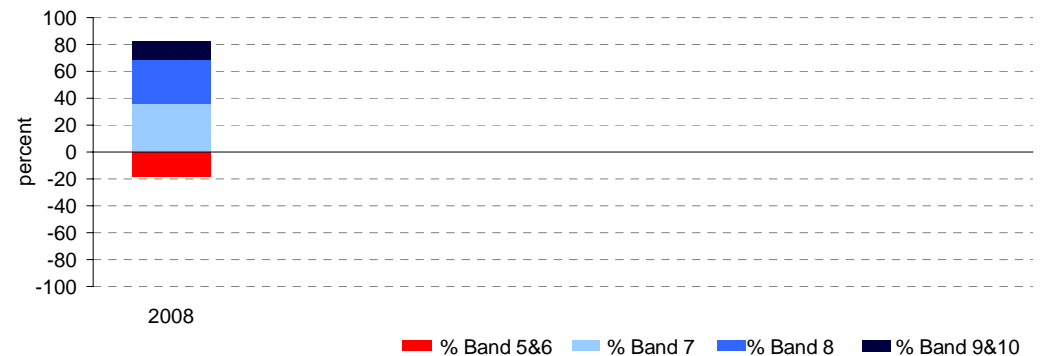
Year 9

	student participation		Percent of students by NAP Band						Mean Scaled Score	
	(n)	(%)*	Band 5	Band 6	Band 7	Band 8	Band 9	Band 10	School	State
2008	239	89	4	14	36	33	10	3	576.0	572.5

Percent of students by NAP Band

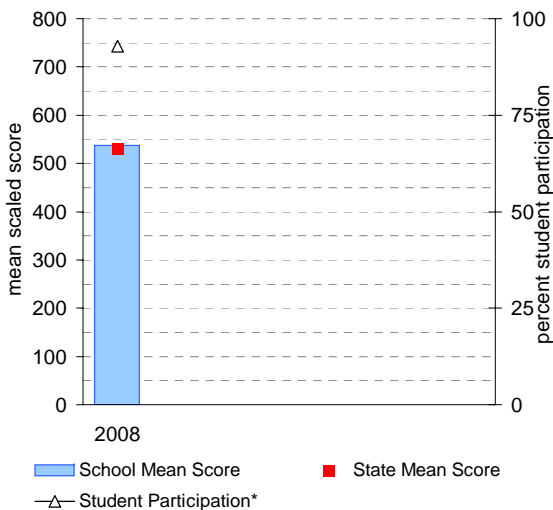


Percent of students by NAP Band

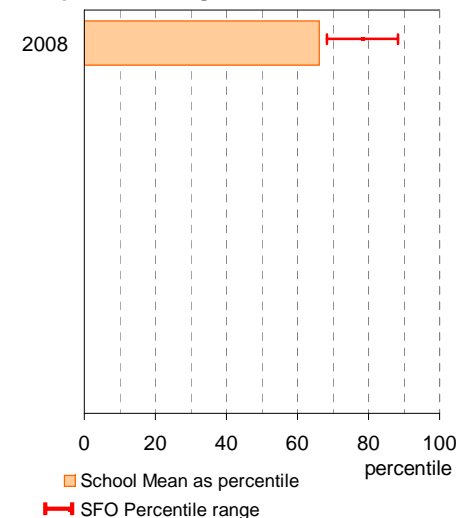


Year 7

School Mean against State Mean, including Participation

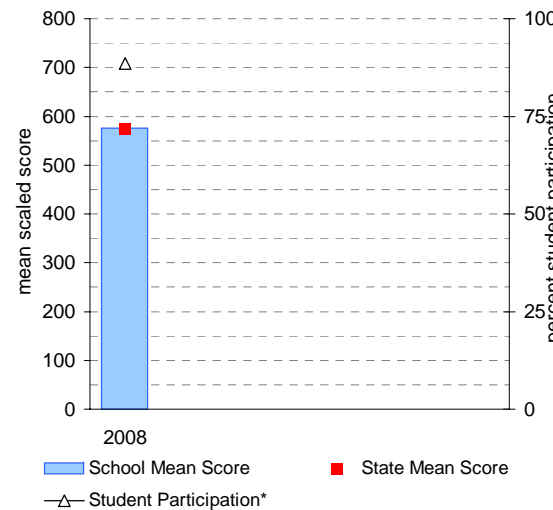


School Mean as percentile against SFO percentile range

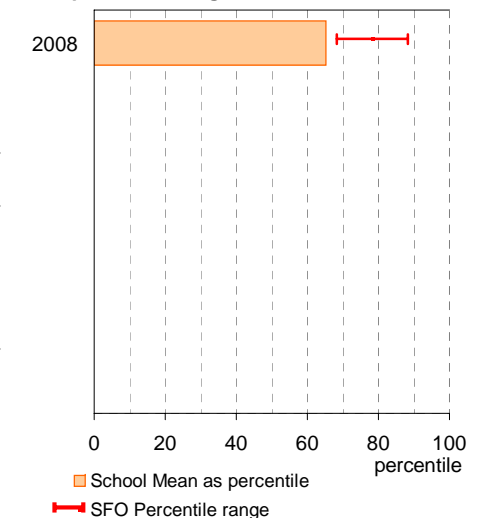


Year 9

School Mean against State Mean, including Participation



School Mean as percentile against SFO percentile range



NAPLAN Year 7 and 9: Writing

School no: 7603

School name: Berwick Secondary College

Source of data: Victorian Curriculum and Assessment Authority.

Explanation: The National Assessment Program - Literacy and Numeracy (NAPLAN) is conducted each year for students in Years 3, 5, 7 and 9. For more detailed NAPLAN data, refer to the NAPLAN Data Service website at <http://naplands.vcaa.vic.edu.au>. A reference guide for analysing NAPLAN data is available at <http://www.vcaa.vic.edu.au/vcaa/prep10/naplan/schools/analysingnaplandata.pdf>.

Notes: * % student participation = (students who participated in NAPLAN / February enrolments) * 100

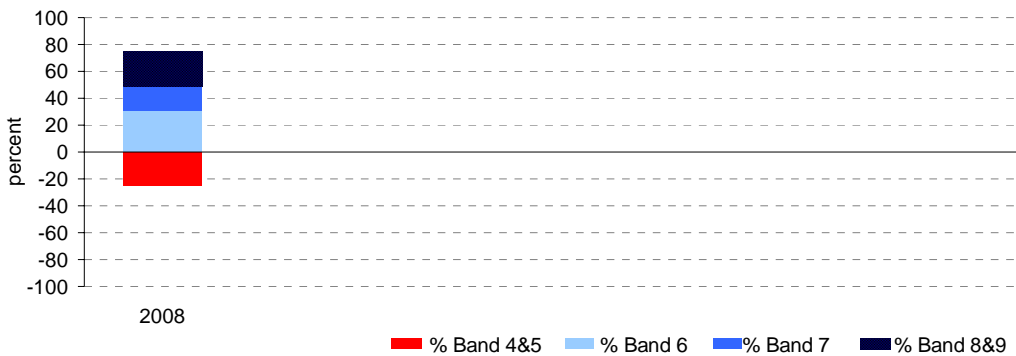
Year 7

	student participation		Percent of students by NAP Band						Mean Scaled Score	
	(n)	(%)*	Band 4	Band 5	Band 6	Band 7	Band 8	Band 9	School	State
2008	269	92	10	15	31	18	16	10	521.6	534.0

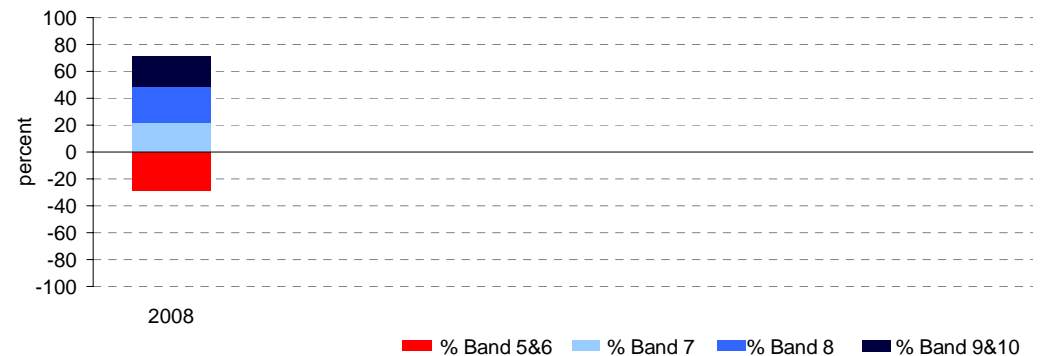
Year 9

	student participation		Percent of students by NAP Band						Mean Scaled Score	
	(n)	(%)*	Band 5	Band 6	Band 7	Band 8	Band 9	Band 10	School	State
2008	234	87	11	18	22	27	15	8	567.3	571.4

Percent of students by NAP Band

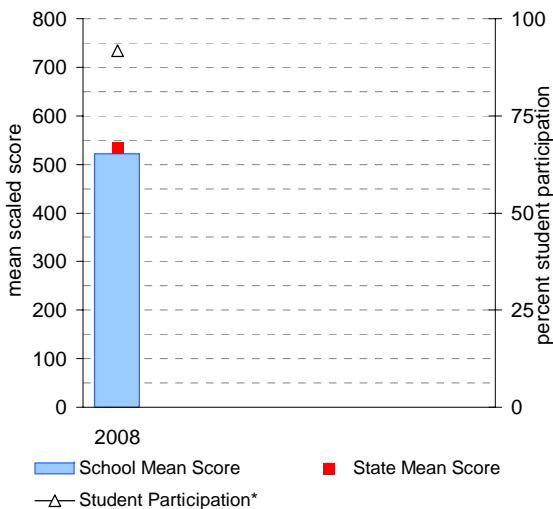


Percent of students by NAP Band

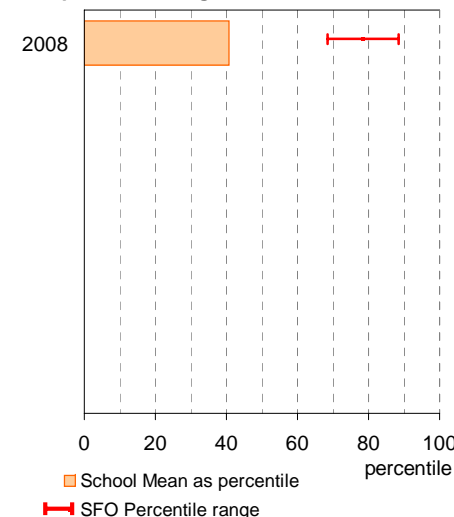


Year 7

School Mean against State Mean, including Participation

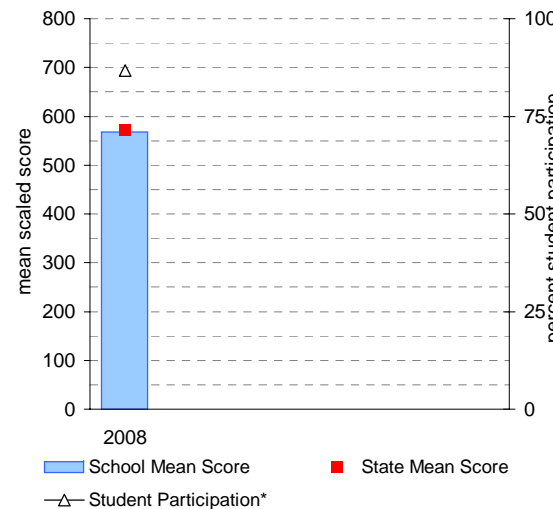


School Mean as percentile against SFO percentile range

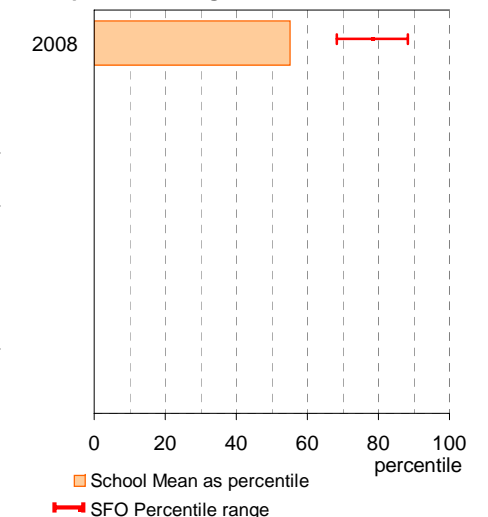


Year 9

School Mean against State Mean, including Participation



School Mean as percentile against SFO percentile range



NAPLAN Year 7 and 9: Numeracy

School no: 7603

School name: Berwick Secondary College

Source of data: Victorian Curriculum and Assessment Authority.

Explanation: The National Assessment Program - Literacy and Numeracy (NAPLAN) is conducted each year for students in Years 3, 5, 7 and 9. For more detailed NAPLAN data, refer to the NAPLAN Data Service website at <http://naplands.vcaa.vic.edu.au>. A reference guide for analysing NAPLAN data is available at <http://www.vcaa.vic.edu.au/vcaa/prep10/naplan/schools/analysingnaplandata.pdf>.

Notes: * % student participation = (students who participated in NAPLAN / February enrolments) * 100

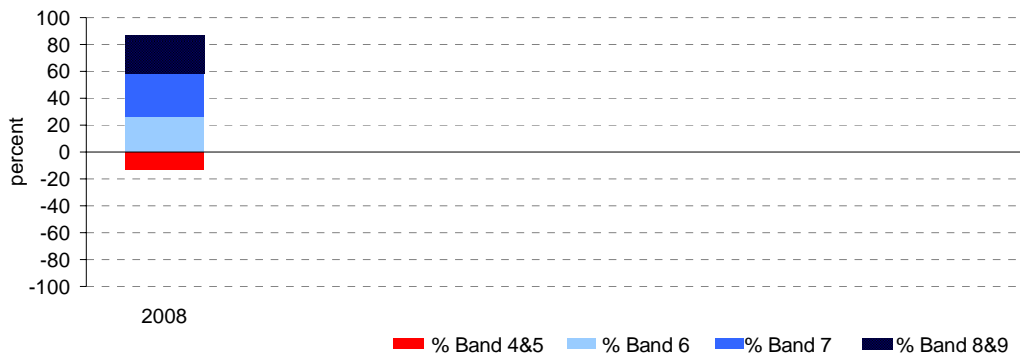
Year 7

	student participation		Percent of students by NAP Band						Mean Scaled Score	
	(n)	(%)*	Band 4	Band 5	Band 6	Band 7	Band 8	Band 9	School	State
2008	276	94	2	11	27	32	17	12	550.7	541.2

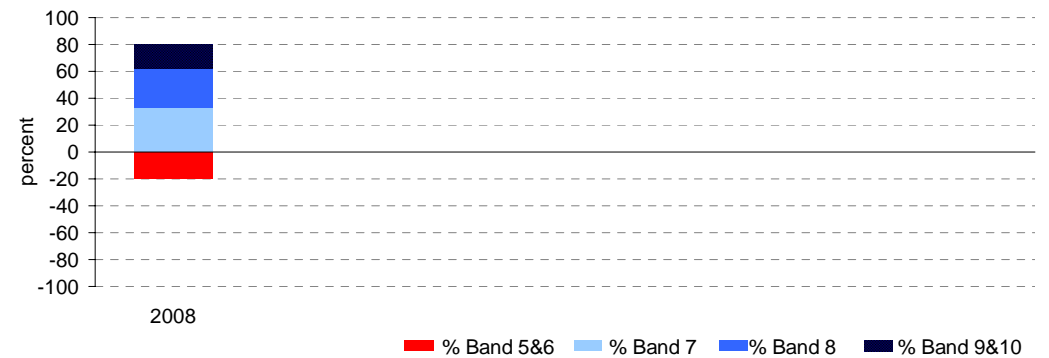
Year 9

	student participation		Percent of students by NAP Band						Mean Scaled Score	
	(n)	(%)*	Band 5	Band 6	Band 7	Band 8	Band 9	Band 10	School	State
2008	243	90	1	19	33	28	15	3	580.7	579.0

Percent of students by NAP Band

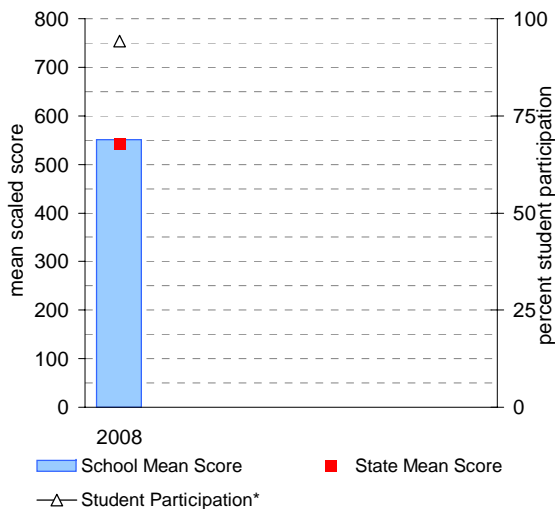


Percent of students by NAP Band

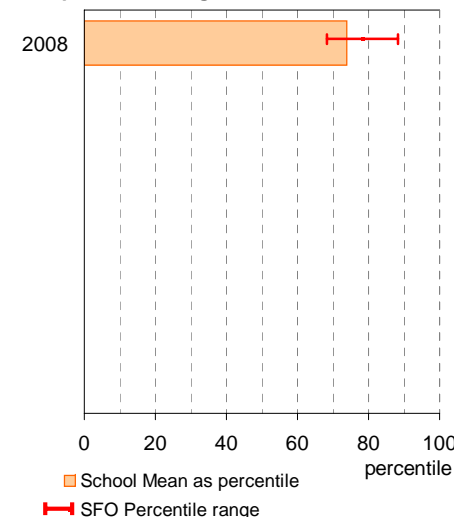


Year 7

School Mean against State Mean, including Participation

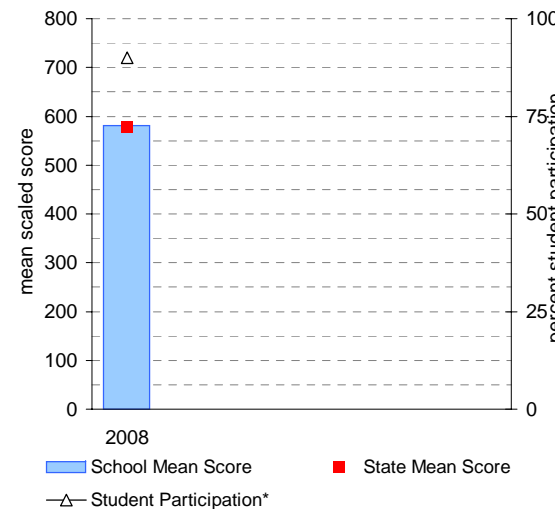


School Mean as percentile against SFO percentile range

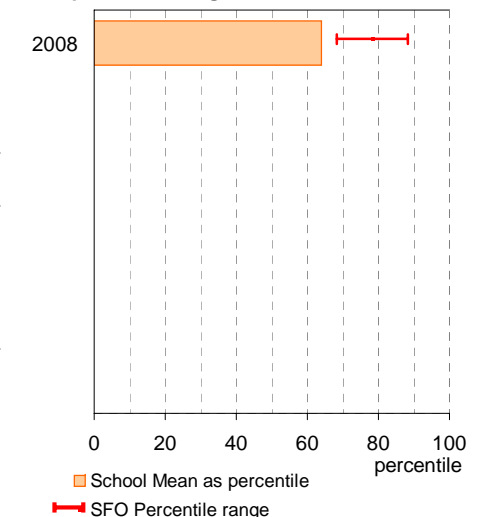


Year 9

School Mean against State Mean, including Participation



School Mean as percentile against SFO percentile range



AIM Year 7 and 9: Reading

School no: 7603

School name: Berwick Secondary College

Source of data: Victorian Curriculum and Assessment Authority.

Explanation: The Achievement Improvement Monitor (AIM) was a statewide assessment program conducted each year up until and including 2007 for students in Years 3, 5, 7 and 9. This has now been replaced by NAPLAN. For more detailed AIM data, refer to the AIM Data Service website at <http://aimds.vcaa.vic.edu.au>.

Notes: * The school trendline is only plotted when there is data for each calendar year.
 ** % student participation = (students who participated in AIM / Feb enrolments) * 100

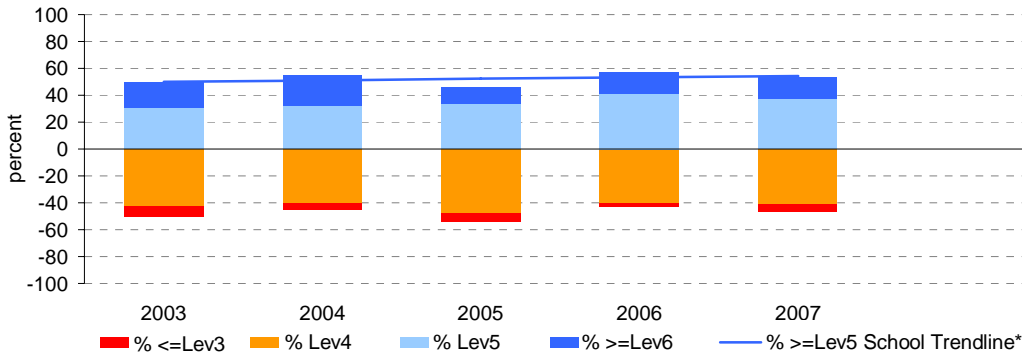
Year 7

	student participation		Percent of students by VELs level								Mean CSF / VELs Score	
	(n)	(%)**	Lev1	Lev2	Lev3	Lev4	Lev5	Lev6	Lev6E	School	State	
2003	212	86	0	0	8	43	31	19	0	4.1	4.1	
2004	221	94	0	0	5	40	33	22	0	4.2	4.2	
2005	239	93	0	0	6	48	34	12	0	4.1	4.2	
2006	257	94	0	0	2	40	41	16	0	4.2	4.2	
2007	304	93	0	0	6	41	37	16	0	4.1	4.1	

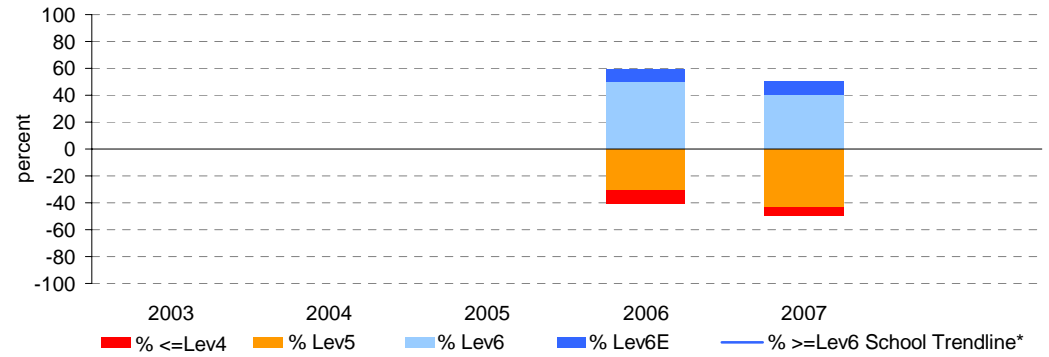
Year 9

	student participation		Percent of students by VELs level								Mean CSF / VELs Score	
	(n)	(%)**	Lev1	Lev2	Lev3	Lev4	Lev5	Lev6	Lev6E	School	State	
2003												
2004												
2005												
2006	228	93	0	0	0	10	31	50	10	5.1	5.1	
2007	229	93	0	0	0	6	43	41	10	5.1	5.1	

Percent of students by VELs level

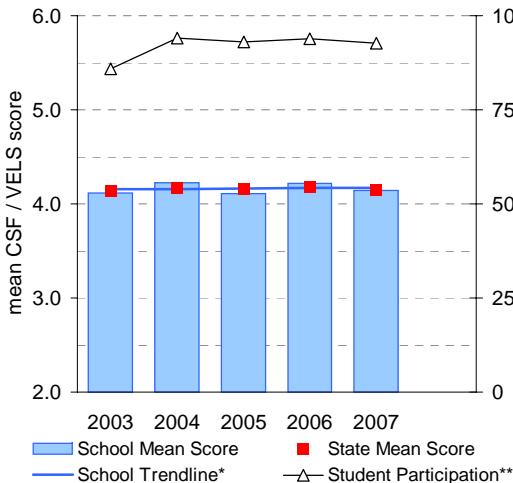


Percent of students by VELs level

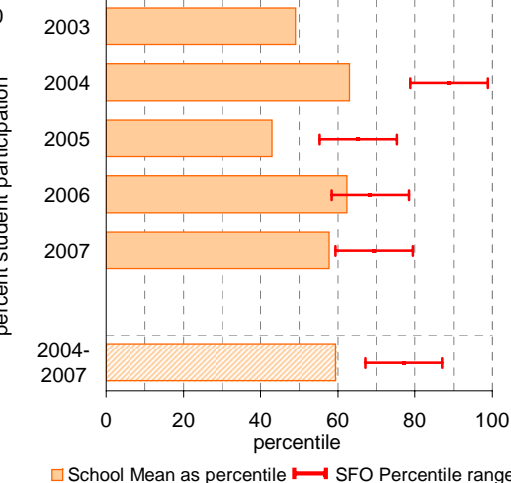


Year 7

School Mean against State Mean, including Participation

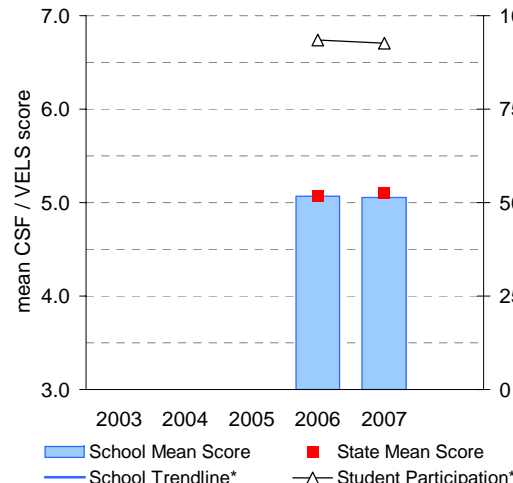


School Mean as percentile against SFO percentile range

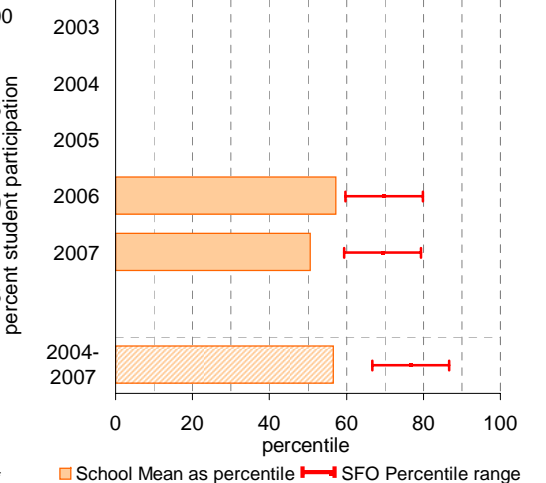


Year 9

School Mean against State Mean, including Participation



School Mean as percentile against SFO percentile range



AIM Year 7 and 9: Mathematics

School no: 7603

School name: Berwick Secondary College

Source of data: Victorian Curriculum and Assessment Authority.

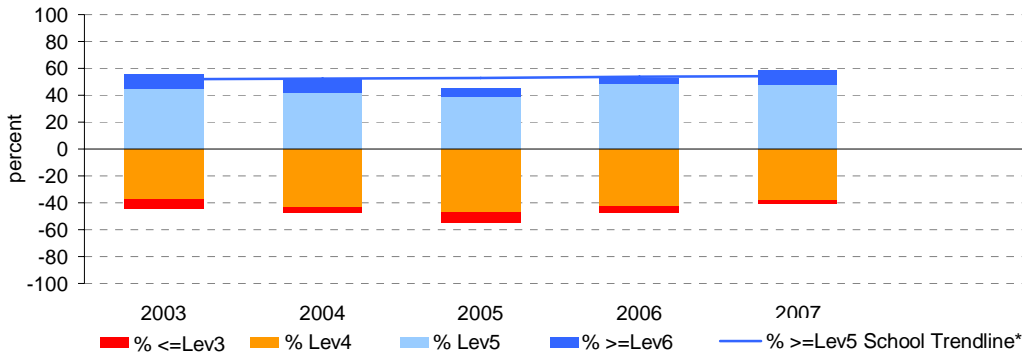
Explanation: The Achievement Improvement Monitor (AIM) was a statewide assessment program conducted each year up until and including 2007 for students in Years 3, 5, 7 and 9. This has now been replaced by NAPLAN. For more detailed AIM data, refer to the AIM Data Service website at <http://aimds.vcaa.vic.edu.au>.

Notes: * The school trendline is only plotted when there is data for each calendar year.
 ** % student participation = (students who participated in AIM / Feb enrolments) * 100

Year 7

	student participation		Percent of students by VELs level							Mean CSF / VELs Score	
	(n)	(%)**	Lev1	Lev2	Lev3	Lev4	Lev5	Lev6	Lev6E	School	State
2003	205	83	0	0	7	37	45	10	0	4.1	4.0
2004	216	92	0	0	4	43	42	11	0	4.1	4.0
2005	242	94	0	0	8	47	38	7	0	3.9	4.0
2006	251	92	0	0	4	43	48	4	0	4.0	4.0
2007	303	92	0	0	2	38	48	11	0	4.2	4.1

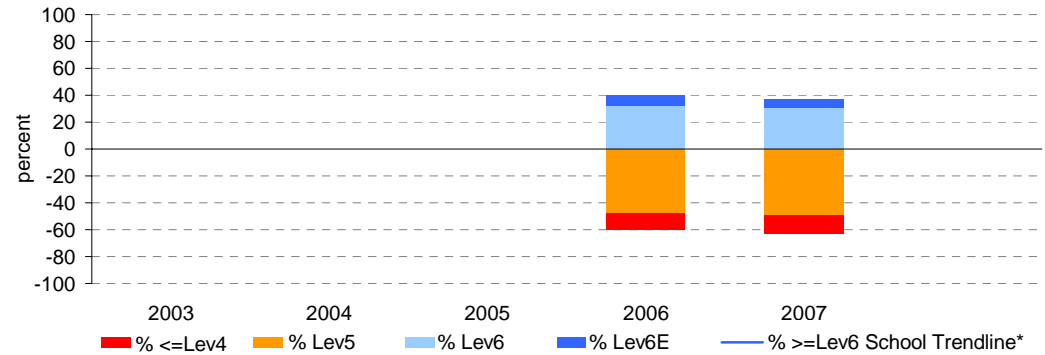
Percent of students by VELs level



Year 9

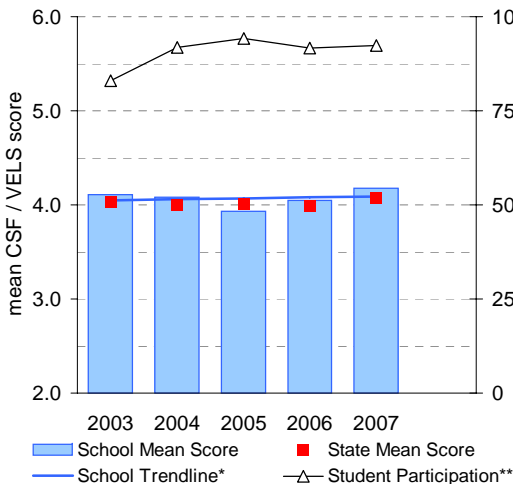
	student participation		Percent of students by VELs level							Mean CSF / VELs Score	
	(n)	(%)**	Lev1	Lev2	Lev3	Lev4	Lev5	Lev6	Lev6E	School	State
2003											
2004											
2005											
2006	221	91	0	0	0	12	48	33	8	4.9	4.8
2007	234	95	0	0	0	14	50	30	6	4.8	4.8

Percent of students by VELs level

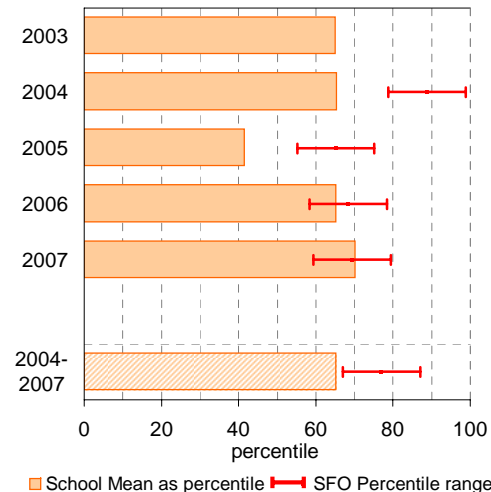


Year 7

School Mean against State Mean, including Participation

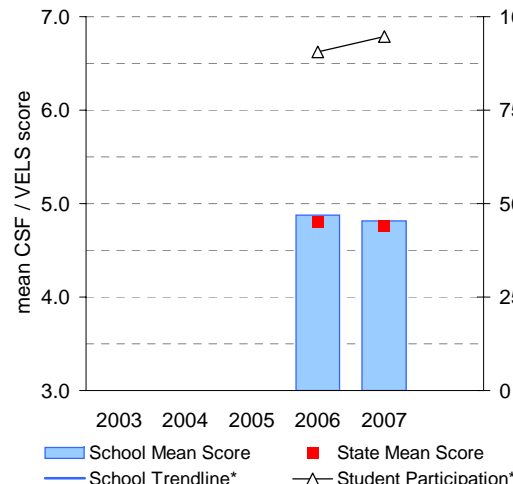


School Mean as percentile against SFO percentile range

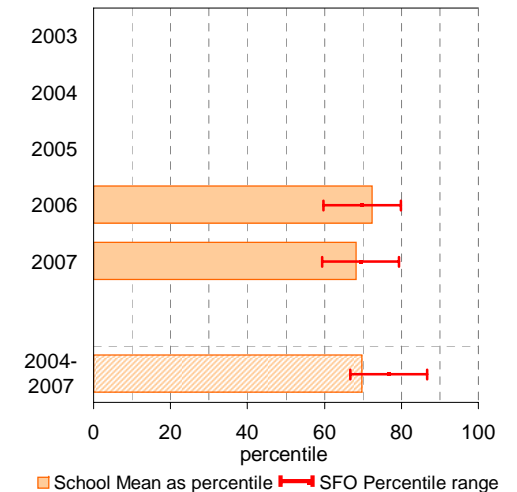


Year 9

School Mean against State Mean, including Participation



School Mean as percentile against SFO percentile range



VCE

School no: 7603

School name: Berwick Secondary College

Explanation: Only 2008 studies, which at least 1 student completed, are included.

Source of data: Victorian Curriculum and Assessment Authority.

Notes:	2004		2005		2006		2007		2008	
- After allstudy, English, Further Maths and Maths Methods, studies are listed in descending order of the number of students in the latest year.	No. of students	school mean	No. of students	school mean	No. of students	school mean	No. of students	school mean	No. of students	school mean
- From 2005, VET study scores are included.										
- From 2005, data is based on 'reported' study scores, not 'achieved' study scores.										
allstudy		27.8		28.5		28.7		28.5		27.4
English EN01	249	28.0	169	28.3	177	29.5	124	28.5	131	27.6
Further Mathematics MA07	110	26.0	90	27.2	81	28.4	79	28.6	84	26.0
Mathematical Methods MA08	72	27.0	53	27.1	58	28.0	34	27.6	39	27.6
Business Management BM03	51	29.7	38	27.9	42	30.7	35	27.7	56	27.6
Psychology PY03	111	26.9	33	30.2	42	29.2	44	28.5	46	27.2
Health & Human Dev. HH03	40	26.7	56	30.1	39	27.6	36	26.4	45	27.4
Biology BI03	48	28.7	57	28.6	50	29.0	32	28.7	30	26.6
Chemistry CH03	49	25.3	38	26.5	42	26.3	18	28.4	27	28.0
Design & Tech. DT03	33	28.0	35	26.3	40	27.6	26	30.8	22	27.3
Literature LI01	19	28.7	17	30.3	31	26.5	20	26.8	22	27.0
Visual Communication & Design VC03	27	29.6	22	30.9	20	29.7	25	30.0	22	28.2
Art AR03	27	29.3	11	27.3	21	27.4	7	31.1	20	26.2
Drama DR03					16	22.9			20	22.7
Geography GE03	29	26.7	30	28.7	21	29.8	24	26.8	19	25.9
Physics PH03	39	27.1	32	26.0	33	25.5	18	26.7	19	28.9
Physical Ed. PE03	28	29.3	37	29.1	28	31.2	32	30.7	18	28.2
Philosophy PL03	18	25.6	20	28.4	15	27.5			17	28.0
Indonesian 2nd Language LO40	15	26.9	15	29.8	17	28.4	8	29.5	15	24.6
History (Revolutions) HI13	20	27.2	34	27.8	21	26.9	11	25.3	14	26.0
Legal Studies LS03	31	26.1	36	30.3	24	28.8	33	28.5	14	32.6
IT Applications IT02	46	33.2	16	33.7	15	32.0	17	30.3	13	30.3
Accounting AC03	30	25.7	20	26.6	21	29.4	11	23.5	12	26.3
Dance DA03	10	27.3	5	31.2	7	30.6	13	25.5	12	27.5
Outdoor & Environmental Studies OS03	19	31.0			23	29.9			12	30.1
Studio Arts SA03	56	27.7	37	30.1	36	29.9	19	31.3	12	27.8
Food & Tech. FY03	19	29.9	8	32.1	8	29.5	5	32.6	11	28.0
Specialist Mathematics MA09	15	25.6	14	25.9	17	27.2	10	26.2	11	29.1
German LO10	10	29.1	3	30.3	5	29.2	6	27.2	8	25.5
Theatre Studies TS03	12	30.7	14	24.3	13	22.5			7	27.0
Community Services Work (VCE VET) CT11					10	32.7	2	31.5	4	37.0
Electrotechnology (VCE VET) ET06					3	35.3			4	33.0
Software Development IT03	20	31.9	16	34.3	22	29.0			3	37.3
English ESL EN09	4	34.8	8	36.0	2	27.0	3	35.7	2	42.5
French LO09							1	50.0	2	35.0
Music (VCE VET) MI07					1	36.0	3	33.0	2	26.0
Business Admin (VCE VET) BU05			1	27.0			2	34.5	1	14.0
Equine Industry (VCE VET) EQ02							3	29.0	1	29.0
Greek LO22							1	37.0	1	27.0
Multimedia (VCE VET) MU02					4	30.8	4	30.3	1	31.0

VCE

School no: 7603

School name: Berwick Secondary College

Explanation: Only 2008 studies, which at least 1 student completed, are included.

Source of data: Victorian Curriculum and Assessment Authority.

Notes:	2004		2005		2006		2007		2008	
	No. of students	school mean	No. of students	school mean	No. of students	school mean	No. of students	school mean	No. of students	school mean
- After allstudy, English, Further Maths and Maths Methods, studies are listed in descending order of the number of students in the latest year.										
- From 2005, VET study scores are included.										
- From 2005, data is based on 'reported' study scores, not 'achieved' study scores.										
Music Industry (Tech Prod) (VCE VET) MI09					1	31.0			1	27.0
Spanish LO27									1	27.0
Turkish LO29									1	21.0

VCE

School no: 7603

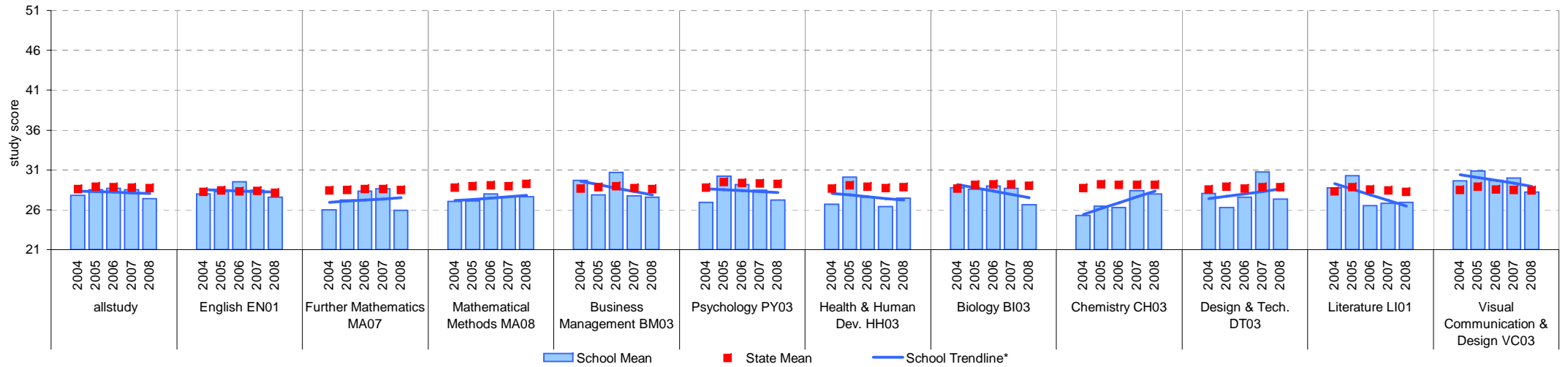
School name: Berwick Secondary College

Source of data: Victorian Curriculum and Assessment Authority.

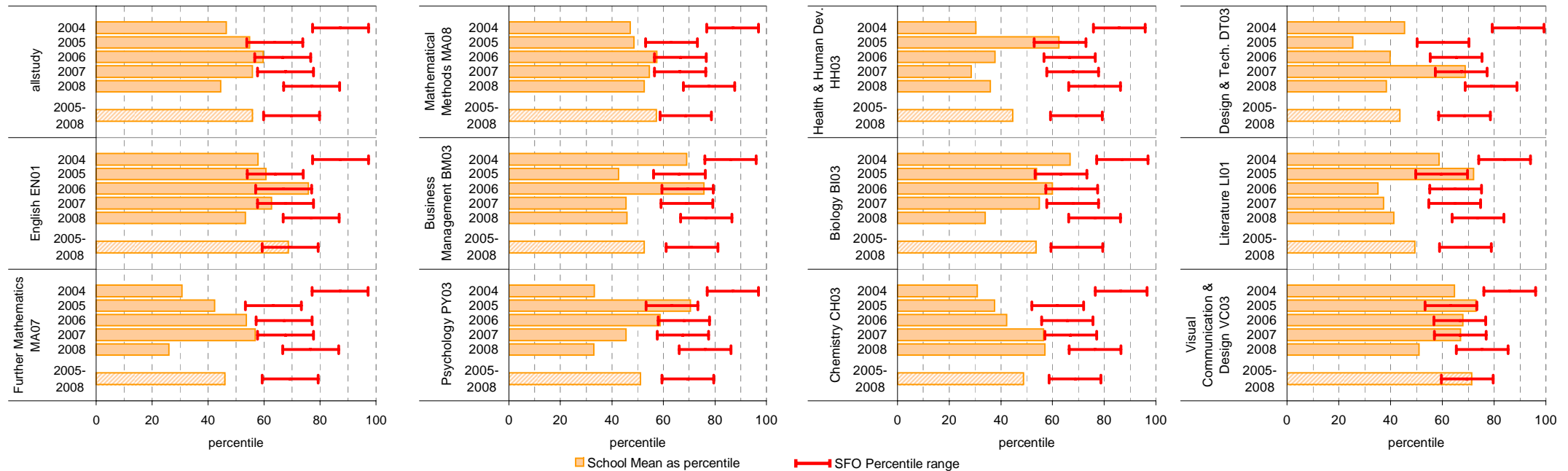
School Mean against State Mean

Notes: * The school trendline is only plotted when there is data for each calendar year.

- After allstudy, EN01, MA07 and MA08, the remaining studies are charted in order of the number of students who completed that study in 2008, from highest to lowest.
- From 2005, VET study scores are included.
- From 2005, data is based on 'reported' study scores, not the 'achieved' study scores.
- Only the results of the 32 studies with the most students (apart from EN01, MA07 and MA08) are charted.



School Mean as percentile against SFO percentile range



VCE (cont'd)

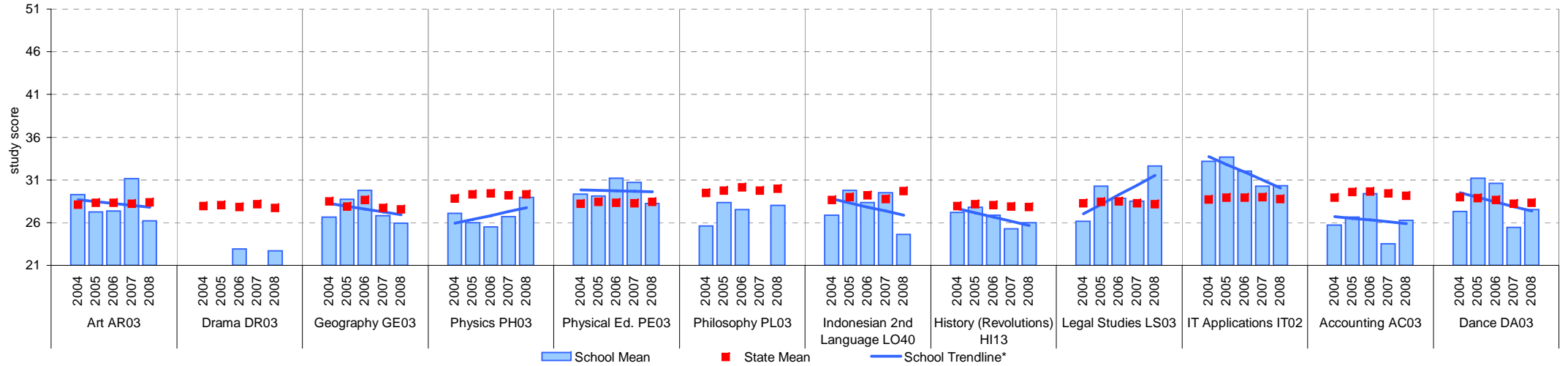
School no: 7603

School name: Berwick Secondary College

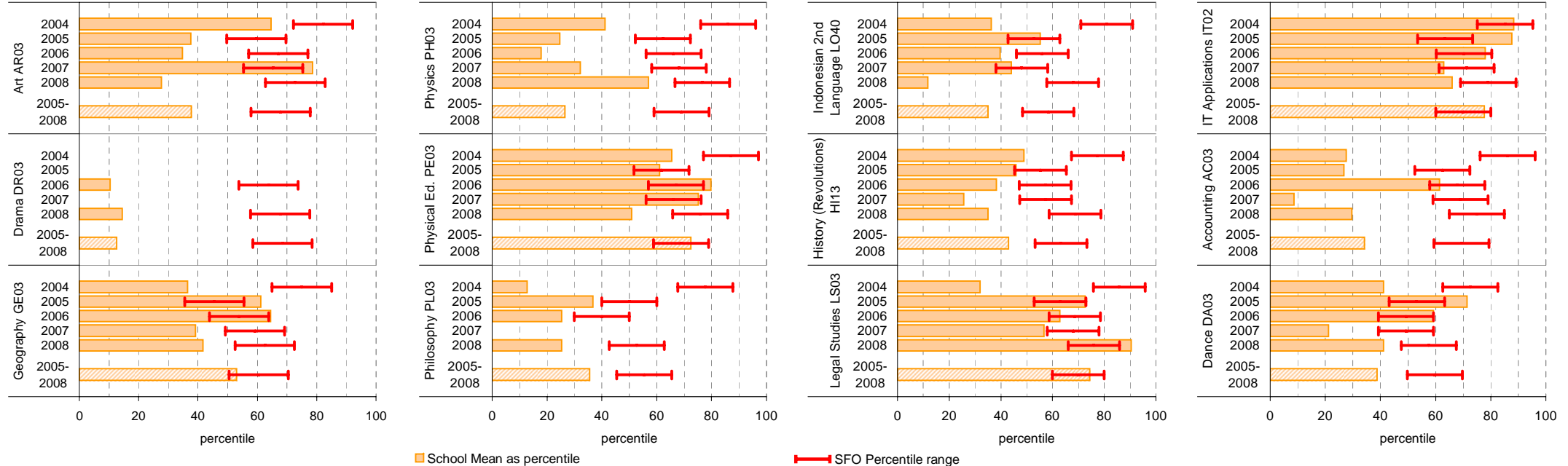
Source of data: Victorian Curriculum and Assessment Authority.

School Mean against State Mean

- Notes:
- * The school trendline is only plotted when there is data for each calendar year.
 - After allstudy, EN01, MA07 and MA08, the remaining studies are charted in order of the number of students who completed that study in 2008, from highest to lowest.
 - From 2005, VET study scores are included.
 - From 2005, data is based on 'reported' study scores, not the 'achieved' study scores.
 - Only the results of the 32 studies with the most students (apart from EN01, MA07 and MA08) are charted.



School Mean as percentile against SFO percentile range



VCE (cont'd)

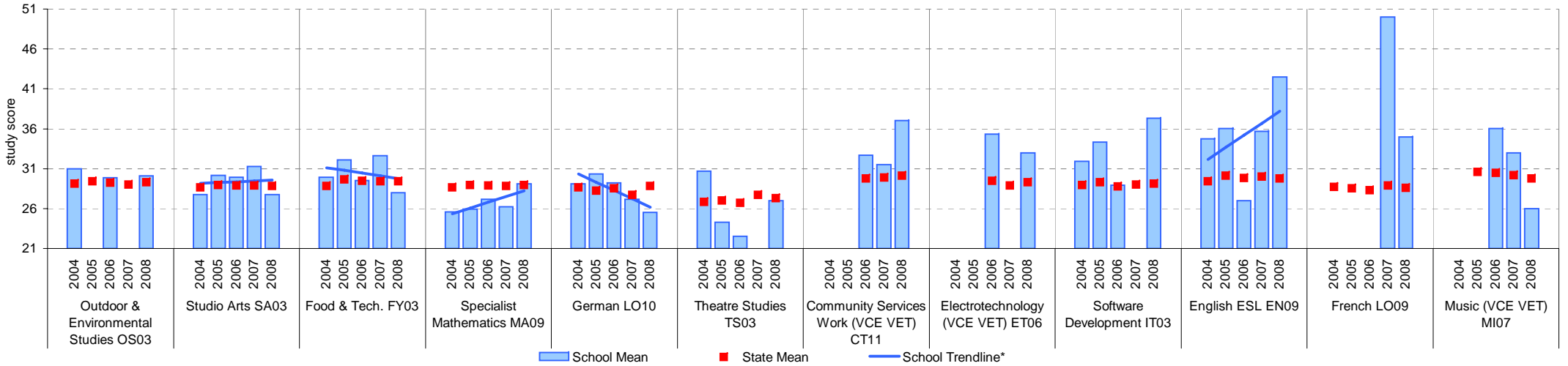
School no: 7603

School name: Berwick Secondary College

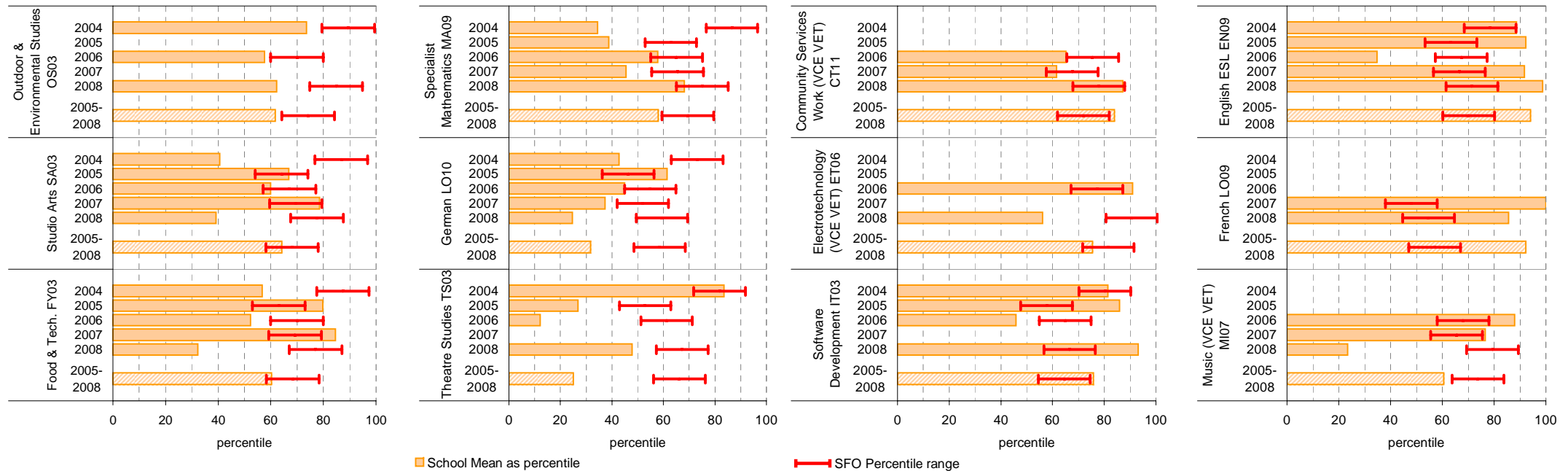
Source of data: Victorian Curriculum and Assessment Authority.

School Mean against State Mean

- Notes:
- * The school trendline is only plotted when there is data for each calendar year.
 - After allstudy, EN01, MA07 and MA08, the remaining studies are charted in order of the number of students who completed that study in 2008, from highest to lowest.
 - From 2005, VET study scores are included.
 - From 2005, data is based on 'reported' study scores, not the 'achieved' study scores.
 - Only the results of the 32 studies with the most students (apart from EN01, MA07 and MA08) are charted.



School Mean as percentile against SFO percentile range

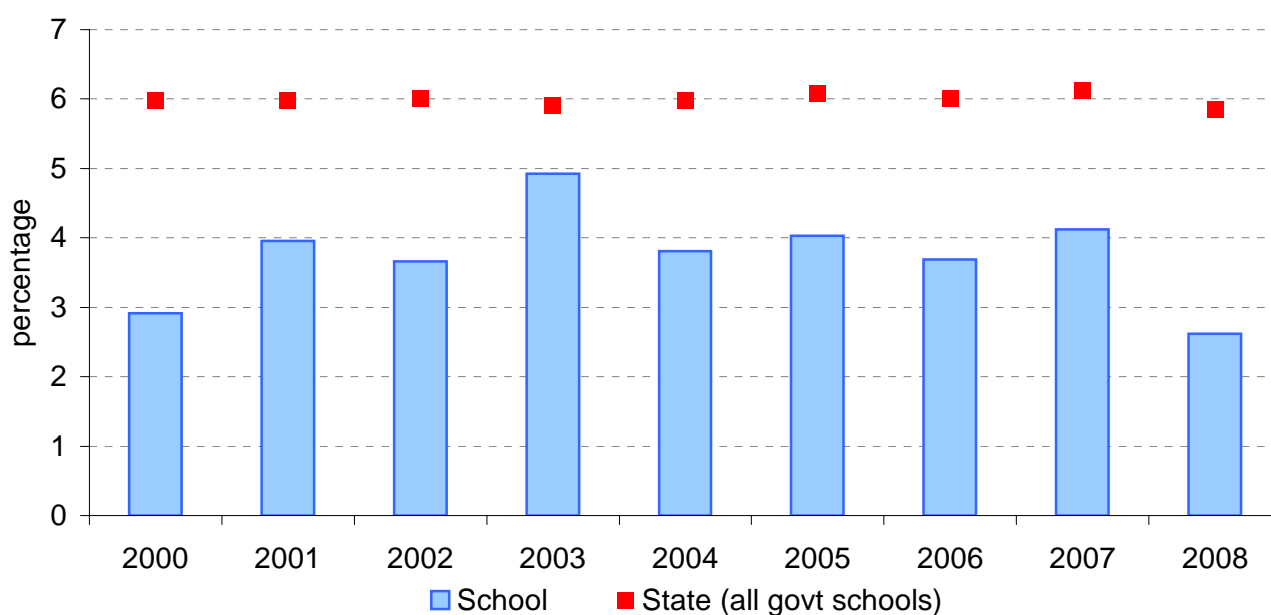


VCE: Study Scores of 40 or more

School no:	7603
School name:	Berwick Secondary College
Explanation:	Of all VCE study scores, the percentage that were 40 or more.
Source of data:	Victorian Curriculum and Assessment Authority.

Year	School		State (all govt schools)
	Total study scores	% 40 or more*	% 40 or more
2000	893	2.9	6.0
2001	909	4.0	6.0
2002	1011	3.7	6.0
2003	1076	4.9	5.9
2004	1286	3.8	6.0
2005	993	4.0	6.1
2006	1030	3.7	6.0
2007	727	4.1	6.1
2008	802	2.6	5.9

VCE percentage of study scores of 40 or more*, 2000 to 2008



Note:

- * Prior to 2005, this data may not match the information published in *The Age*. Data presented on this page prior to 2005 does not include study scores from the small number of VET studies that are given study scores.
- From 2005, VET study scores are included.
- From 2005, data is based on 'reported' study scores, not 'achieved' study scores.

VET

School no: 7603
School name: Berwick Secondary College
Source of data: Victorian Curriculum and Assessment Authority.

Notes: * - The school trendline is only plotted when there is data for each calendar year.

1 - UOC = Unit(s) of Competence.

2 - % students based on yr10, 11 & 12 August enrolments.

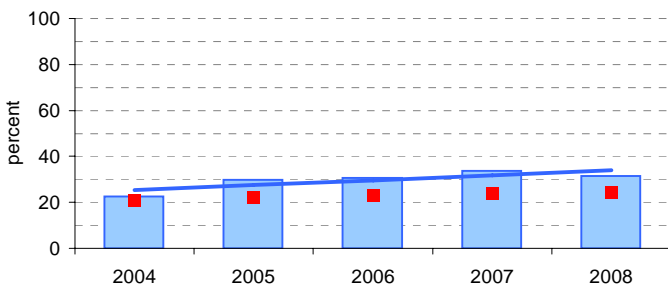
3 - Only includes students undertaking at least 1 UOC.

More detailed information is available on the VASS system provided by VCAA.

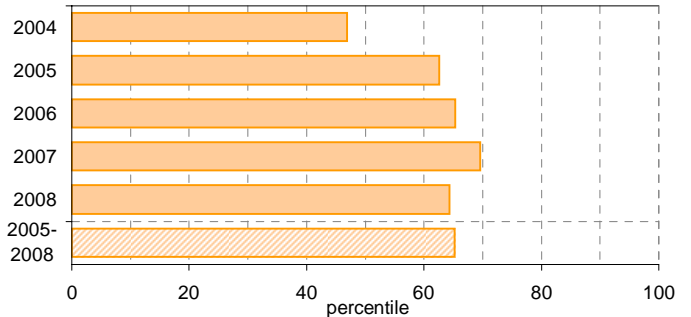
Participation						Completion			
School					State		School		State
Year	Level	No. students undertaking at least 1 UOC ¹	% students ² undertaking at least 1 UOC ¹	Avg no. UOCs ¹ undertaken per student ³	% students ² undertaking at least 1 UOC ¹	Avg no. UOCs ¹ undertaken per student ³	No. UOCs ¹ with satisfactory result	% UOCs ¹ with satisfactory result	% UOCs ¹ with satisfactory result
2004	10	18	5.1	15	20.7	11.9	42	15.6	71.3
	11	90	29.4	12.8					
	12	108	35.7	14.1					
	10-12	216	22.5	13.6					
2005	10	14	6	12.2	22.3	11.9	95	55.6	72.6
	11	136	41.5	11.4					
	12	89	36.7	15.4					
	10-12	239	29.8	12.9					
2006	10	21	8.4	11.6	23.0	12.0	214	87.7	75.6
	11	102	44.9	8.2					
	12	106	39.6	9.6					
	10-12	229	30.7	9.2					
2007	10	60	24.9	8.6	23.8	11.7	510	98.5	76.4
	11	98	42.8	8.2					
	12	57	33.5	7.9					
	10-12	215	33.6	8.3					
2008	10	75	28.5	8.8	24.6	12.0	661	100	76.7
	11	85	40.6	9.1					
	12	47	25.8	10.3					
	10-12	207	31.6	9.2					

Participation - % Yr10-12 students² undertaking at least 1 UOC¹

School against State

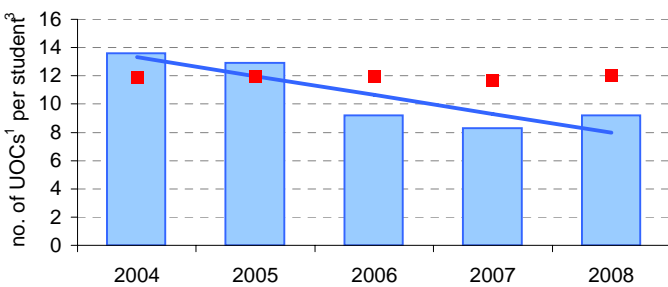


School as percentile

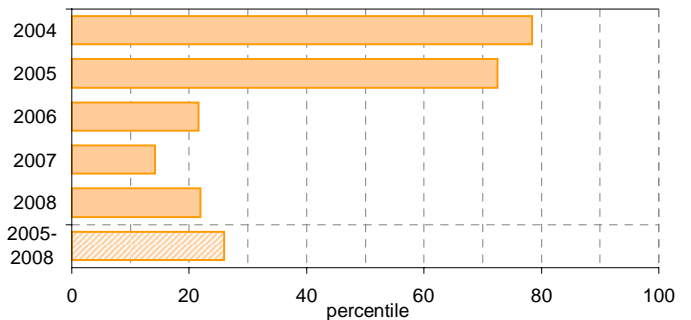


Avg no. UOCs¹ undertaken per student³

School Mean against State Mean

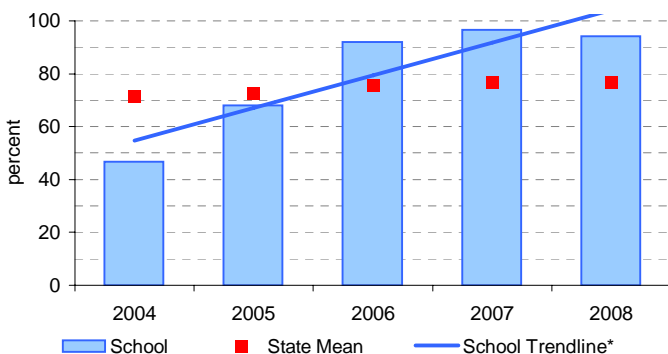


School Mean as percentile

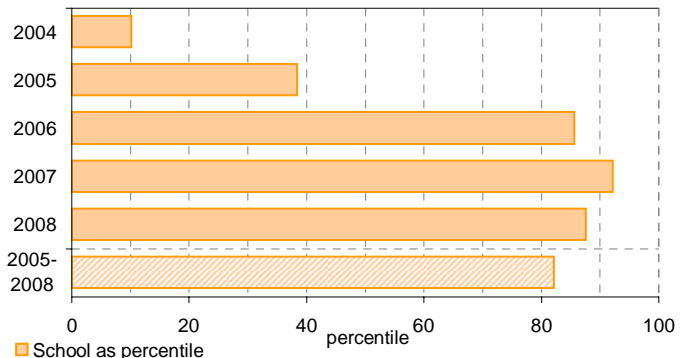


Completion - % UOCs¹ with satisfactory result

School against State



School as percentile



VCAL

School no: 7603
School name: Berwick Secondary College
Explanation: 'No. of VCAL credits undertaken' is calculated by summing the number of credits undertaken by each VCAL student across all VCAL students.

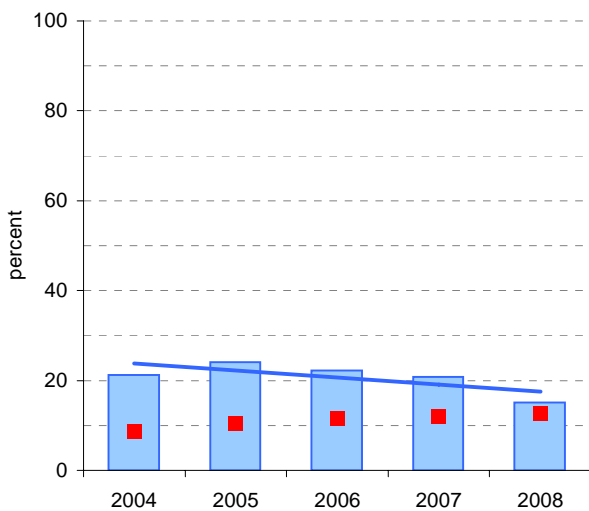
Notes: * - The school trendline is only plotted when there is data for each calendar year.

1 - No. and % students based on yr11 & 12 August enrolments.

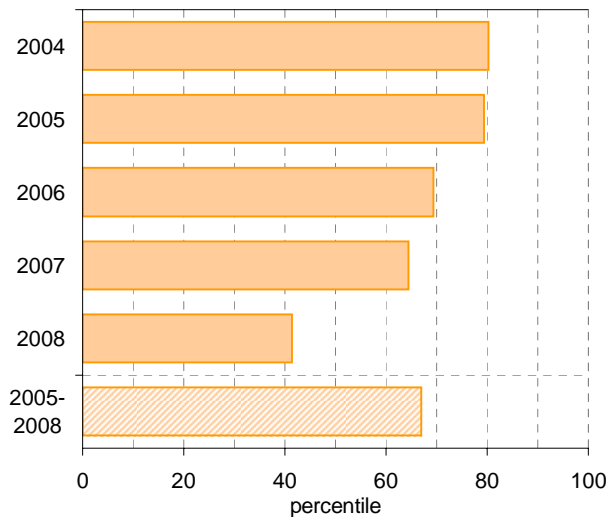
Source of data: Victorian Curriculum and Assessment Authority.
 More detailed information is available on the VASS system provided by VCAA.

Participation						Completion		
School					State	School		State
Year	Year Level	No. students ¹	No. students undertaking VCAL	% students ¹ undertaking VCAL	% students ¹ undertaking VCAL	No. VCAL unit credits undertaken	% satisfactory completion of VCAL credits	% satisfactory completion of VCAL credits
2004	11-12	608.2	129	21.2	8.6	724	71.4	70.4
2005	11-12	569.9	137	24.0	10.4	813	77.0	72.9
2006	11-12	494.9	110	22.2	11.5	599	88.3	77.7
2007	11-12	399	83	20.8	12.0	513	74.1	76.5
2008	11-12	391.6	59	15.1	12.7	313	90.4	75.8

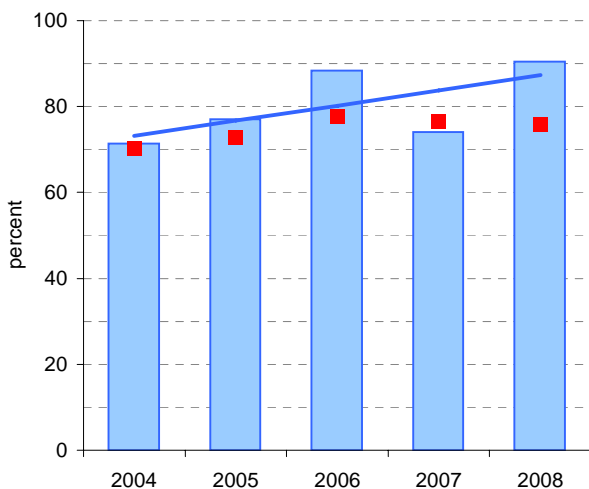
Participation - % Yr11-12 students¹ undertaking VCAL School against State



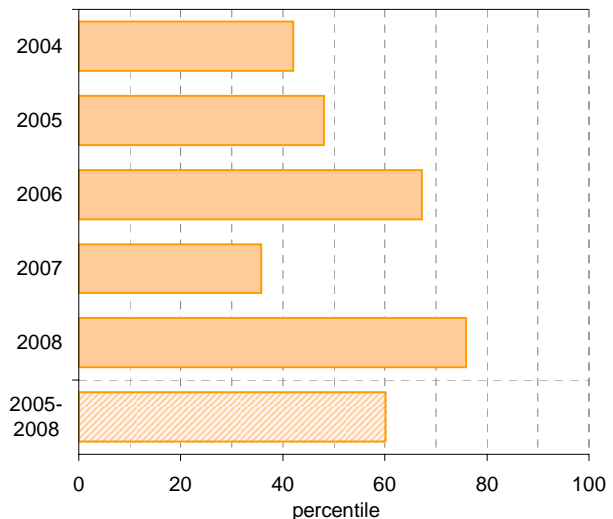
School as percentile



Completion - % satisfactory completion of VCAL credits School against State



School as percentile



■ School
 ■ State Mean
 — School Trendline*
 School as percentile

Teacher Assessment of Student Progress (PSD students)

School no: 7603

School name: Berwick Secondary College

Explanation: Teachers assess their students' progress against the 8 VELS Domains / CSF KLAs using a 6-point scale (students in special schools and those who cannot be assessed against the VELS / CSF).

Source of data: Data transmitted from school to DEECD via an online web-form.

	No progress (%)	Little progress (%)	Satisfactory progress (%)	Good progress (%)	Very good progress (%)	Excellent progress (%)	Total students assessed ¹ (no.)
--	--------------------	---------------------------	---------------------------------	-------------------------	------------------------------	------------------------------	--

2004 (by CSF KLA)

English
Mathematics
Science
Technology
The Arts
H&PE
SOSE

2005 (by CSF KLA)

English
Mathematics
Science
Technology
The Arts
H&PE
SOSE

2006 (by VELS Domain)

English
Mathematics
Science
ICT
The Arts
H&PE
Civics & Citizenship

2007 (by VELS Domain)

English
Mathematics
Science
ICT
The Arts
H&PE
Civics & Citizenship

2008 (by VELS Domain)

English
Mathematics
Science
ICT
The Arts
H&PE
Civics & Citizenship

2007 Secondary state benchmarks (by VELS Domain)*

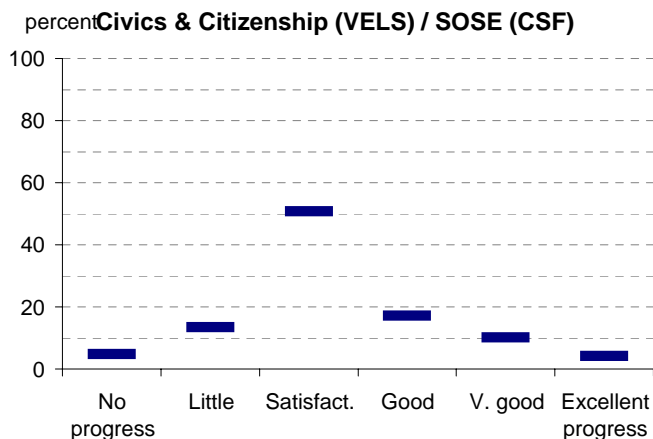
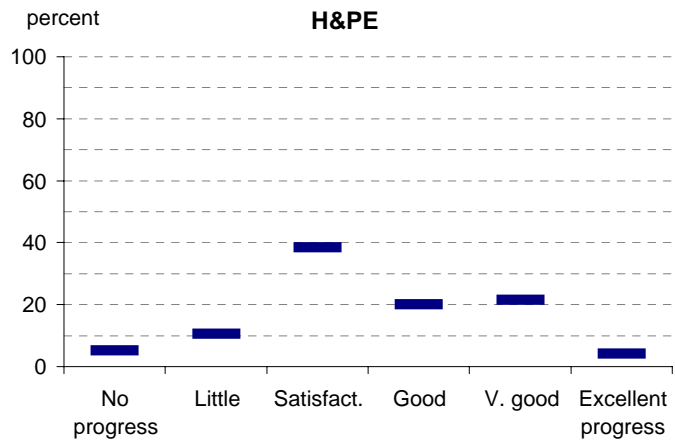
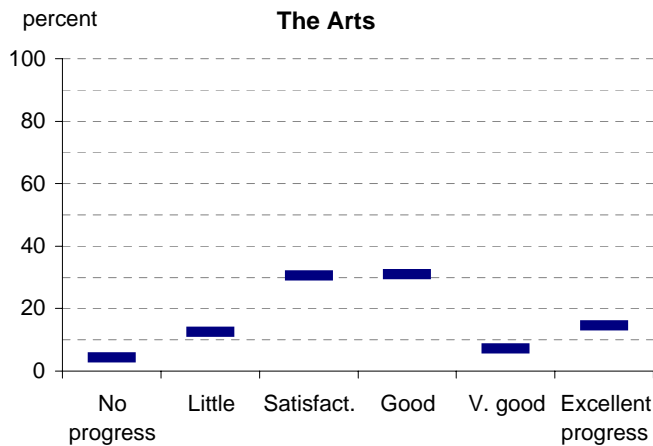
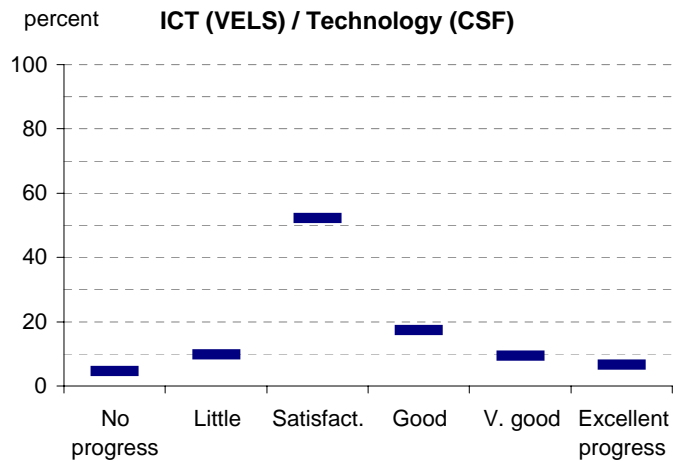
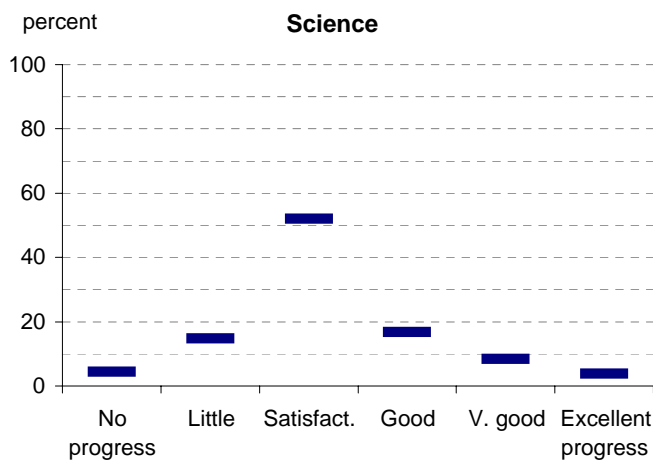
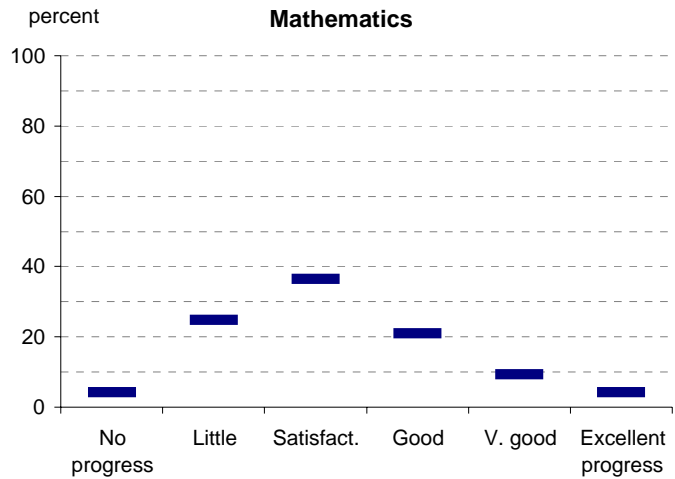
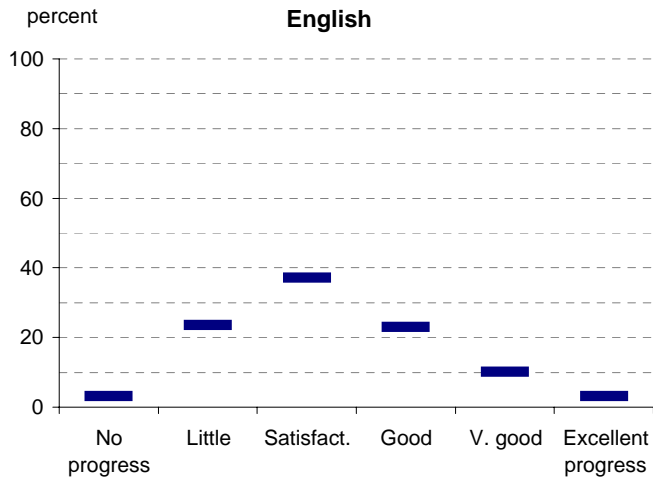
English	3	24	37	23	10	3
Mathematics	4	25	36	21	9	4
Science	4	15	52	17	8	4
ICT	5	10	52	17	9	7
The Arts	4	12	31	31	7	14
H&PE	5	11	39	20	21	4
Civics & Citizenship	5	13	51	17	10	4

Notes: ¹ If schools provided percentages only, it is not possible to report the number of students assessed. In these cases, the total percentage (100) will be shown.

* 2008 benchmarks will be calculated in August, when data from all schools has been submitted.

Teacher Assessment of Student Progress (PSD students)

School no: 7603
 School name: Berwick Secondary College



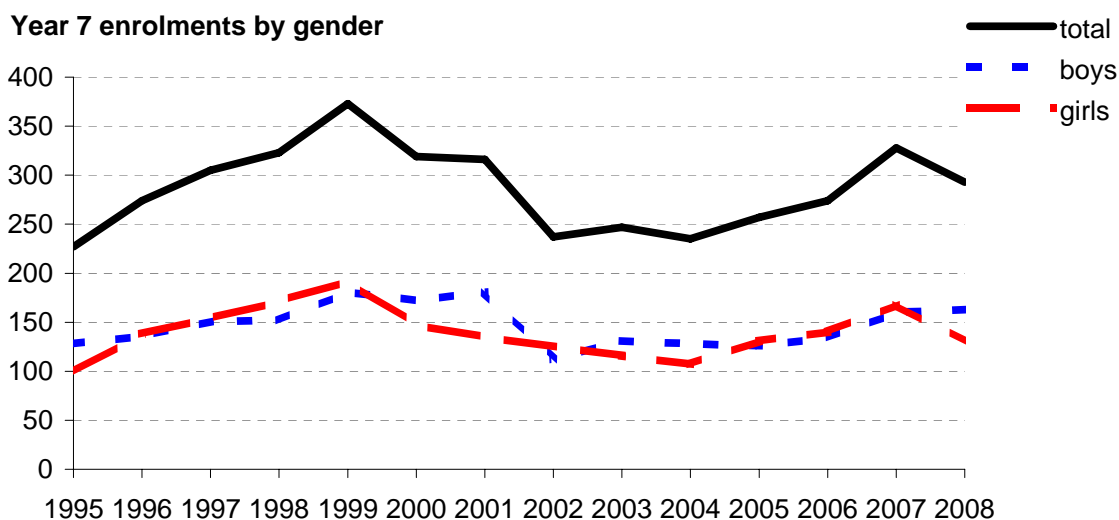
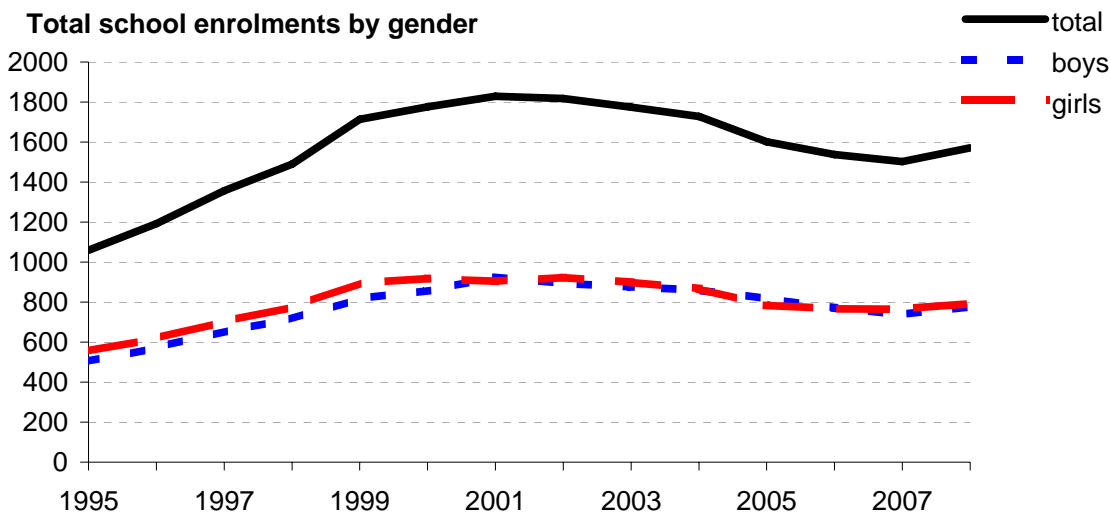
- 2004 (by CSF KLA)
- 2005 (by CSF KLA)
- 2006 (by VELS Domain)
- 2007 (by VELS Domain)
- 2008 (by VELS Domain)
- 2007 Secondary state benchmarks (by VELS Domain)*

Notes: * 2008 benchmarks will be calculated in August, when data from all schools has been submitted.

Enrolments

School no: 7603
School name: Berwick Secondary College
Explanation: Enrolments at February census.
Source of data: February census.

Year	Total school enrolment			Prep enrolment			Year 7 enrolments		
	boys	girls	total	boys	girls	total	boys	girls	total
1995	504	556	1059				128	99	227
1996	572	620	1192				136	138	274
1997	655	702	1357				151	154	305
1998	715	775	1490				152	171	323
1999	818	896	1713				181	192	373
2000	858	919	1777				172	147	319
2001	925	904	1829				181	135	316
2002	894	924	1818				112	125	237
2003	876	899	1775				131	116	247
2004	861	867	1728				128	107	235
2005	818	784	1601				126	131	257
2006	771	767	1538				134	140	274
2007	738	765	1503				160	168	328
2008	778	793	1572				163	130	293



Apparent Student Retention

Note: * The school trendline is only plotted when there is data for each calendar year.

School no: 7603

School name: Berwick Secondary College

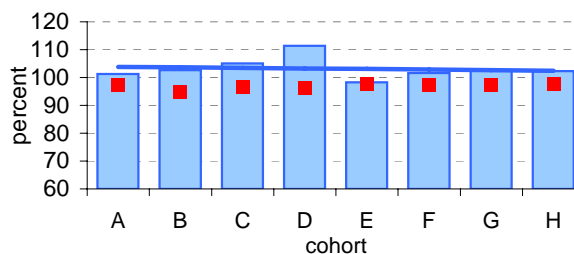
Explanation: Apparent retention rates are based on enrolments. For example, Year 7Feb-12Aug apparent retention refers to year 12 enrolment of students in full-time school education in August expressed as a percentage of year 7 enrolments in February five years earlier.

Source of data: February and August census.

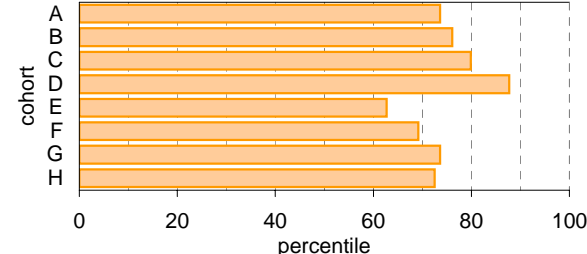
Year 7 (Feb) - 10 (Aug)

	Cohorts:	A	B	C	D	E	F	G	H
Year 7		1998	1999	2000	2001	2002	2003	2004	2005
Year 10		2001	2002	2003	2004	2005	2006	2007	2008
Year 7 (Feb)	no.	323	373	319	316	237	247	235	257
Year 10 (Aug)	no.	327	383	335	352	233	251	241	263
Year 7 (Feb) - 10 (Aug)	%	101.2	102.7	105.0	111.4	98.3	101.6	102.6	102.3
State mean	%	97.3	95.0	96.6	96.3	97.6	97.3	97.4	97.6

School against State

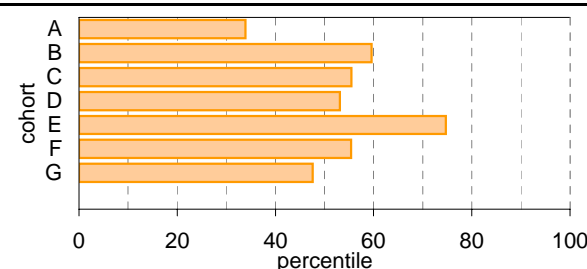
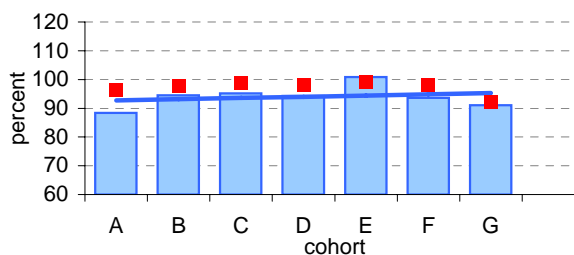


School as percentile



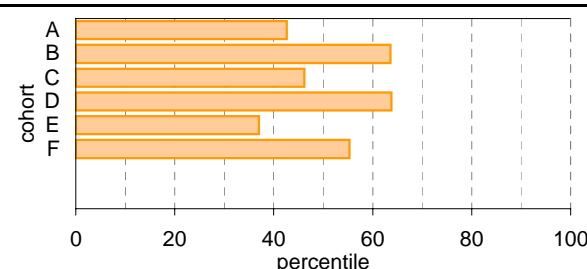
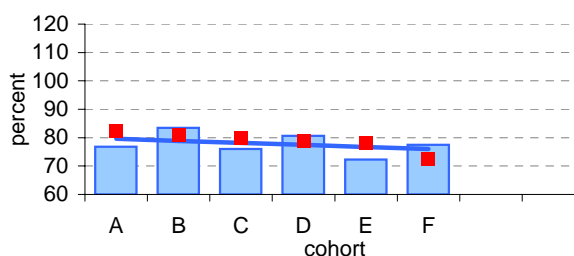
Year 10 (Aug) - 11 (Feb)

	Cohorts:	A	B	C	D	E	F	G
Year 10		2001	2002	2003	2004	2005	2006	2007
Year 11		2002	2003	2004	2005	2006	2007	2008
Year 10 (Aug)	no.	327	383	335	352	233	251	241
Year 11 (Feb)	no.	289.1	361.9	319	332	235	235	219.4
Year 10 (Aug) - 11 (Feb)	%	88.4	94.5	95.2	94.3	100.9	93.6	91.0
State mean	%	96.2	97.7	98.7	98.2	99.0	98.2	92.0



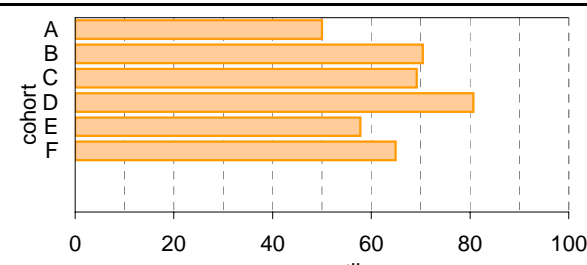
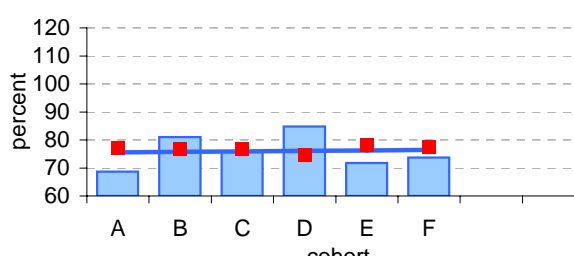
Year 11 (Feb) - 12 (Aug)

	Cohorts:	A	B	C	D	E	F
Year 11		2002	2003	2004	2005	2006	2007
Year 12		2003	2004	2005	2006	2007	2008
Year 11 (Feb)	no.	289.1	361.9	319	332	235	235
Year 12 (Aug)	no.	222	302.2	242.5	267.9	170	182.1
Year 11 (Feb) - 12 (Aug)	%	76.8	83.5	76.0	80.7	72.3	77.5
State mean	%	82.5	81.0	79.8	78.8	78.1	72.7



Year 7 (Feb) - 12 (Aug)

	Cohorts:	A	B	C	D	E	F
Year 7		1998	1999	2000	2001	2002	2003
Year 12		2003	2004	2005	2006	2007	2008
Year 7 (Feb)	no.	323	373	319	316	237	247
Year 12 (Aug)	no.	222	302.2	242.5	267.9	170	182.1
Year 7 (Feb) - 12 (Aug)	%	68.7	81.0	76.0	84.8	71.7	73.7
State mean	%	77.2	76.9	76.8	74.6	78.2	77.5



Legend: School (blue bar), State Mean (red square), School Trendline* (blue line), School as percentile (orange bar)

Real Student Retention

School no: 7603

School name: Berwick Secondary College

Explanation: Real retention rates show the percentage of students who have been enrolled at the same school over a period of time.

For example, the formula for the real retention rate for Year 7Feb to 10Aug for school X in 2008 is as follows:

$$\frac{\text{(no. of students enrolled in Yr10 in school X as at August 2008 census and who enrolled prior to 1/3/2005, ie, enrolled in school X at beginning of Yr7)}}{\text{(enrolments in Yr7 Feb in 2005 according to census)}}$$

By definition, real school retention will be less than or equal to 100% (assuming there are no students repeating the year, or accelerating through years). Generally, real school retention rates are affected by students transferring to another school & students exiting the school system. They are a measure of the 'holding power' of the school.

Source of data: Data retrieved electronically from CASES21 at time of rollover.

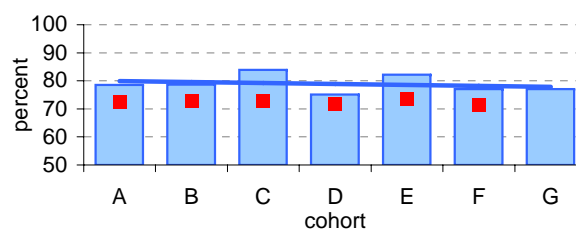
Notes: * The school trendline is only plotted when there is data for each calendar year.

^ 2008 benchmarks will be calculated in August, when data from all schools has been submitted.

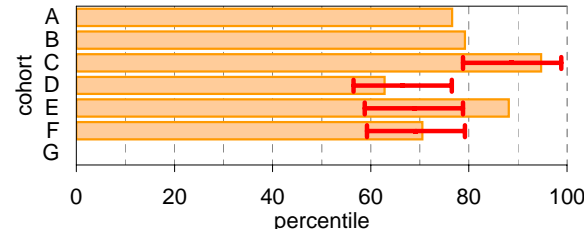
Year 7 (Feb) - 10 (Aug)

	Cohorts:	A	B	C	D	E	F	G
Year 7		1999	2000	2001	2002	2003	2004	2005
Year 10		2002	2003	2004	2005	2006	2007	2008
Year 7 (Feb)	no.	373	319	316	237	247	235	257
Year 10 (Aug)	no.	293	251	265	178	203	181	198
Year 7 (Feb) - 10 (Aug)	%	78.6	78.7	83.9	75.1	82.2	77.0	77.0
State mean^	%	72.5	72.7	72.8	71.7	73.5	71.5	

School against State^

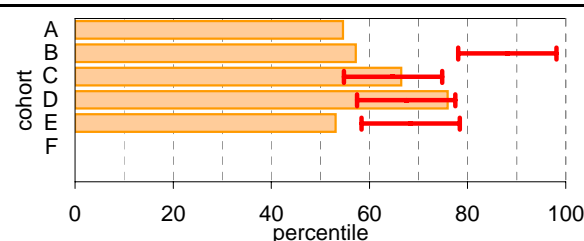
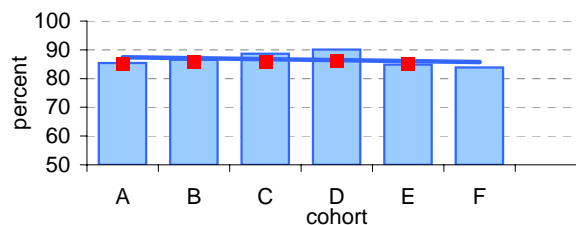


School as percentile against SFO percentile range^



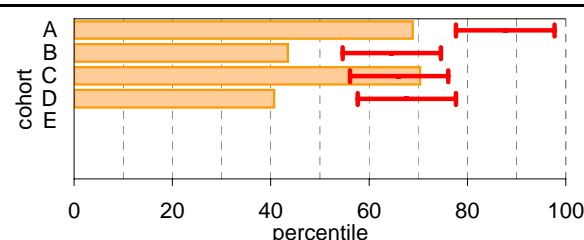
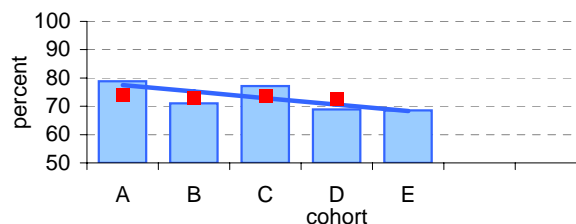
Year 10 (Aug) - 11 (Feb)

	Cohorts:	A	B	C	D	E	F
Year 10		2002	2003	2004	2005	2006	2007
Year 11		2003	2004	2005	2006	2007	2008
Year 10 (Aug)	no.	383	335	352	233	251	241
Year 11 (Feb)	no.	327	290	312	210	213	202
Year 10 (Aug) - 11 (Feb)	%	85.4	86.6	88.6	90.1	84.9	83.8
State mean^	%	84.9	85.9	85.9	86.1	85.1	



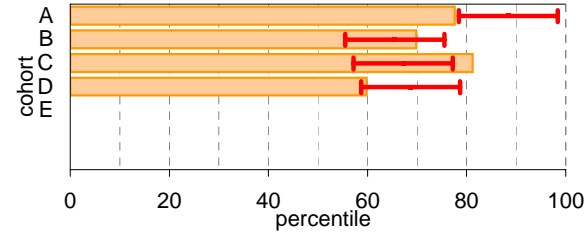
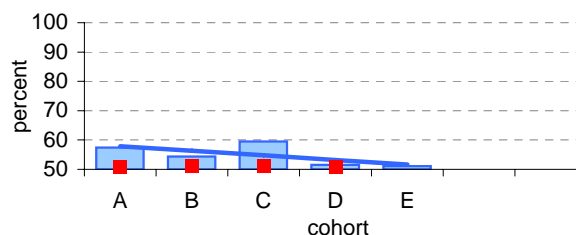
Year 11 (Feb) - 12 (Aug)

	Cohorts:	A	B	C	D	E
Year 11		2003	2004	2005	2006	2007
Year 12		2004	2005	2006	2007	2008
Year 11 (Feb)	no.	361.9	319	332	235	235
Year 12 (Aug)	no.	285.3	226.8	256	162	161.1
Year 11 (Feb) - 12 (Aug)	%	78.8	71.1	77.1	68.9	68.6
State mean^	%	73.9	73.0	73.5	72.5	



Year 7 (Feb) - 12 (Aug)

	Cohorts:	A	B	C	D	E
Year 7		1999	2000	2001	2002	2003
Year 12		2004	2005	2006	2007	2008
Year 7 (Feb)	no.	373	319	316	237	247
Year 12 (Aug)	no.	214.3	173.3	188	122	126.1
Year 7 (Feb) - 12 (Aug)	%	57.5	54.3	59.5	51.5	51.1
State mean^	%	50.6	51.0	51.1	50.8	



Legend: School (blue bar), State Mean (red square), School Trendline* (blue line)

Legend: School as percentile (orange bar), SFO Percentile range (red error bar)

Exit Destination: Year 10

School no: 7603

School name: Berwick Secondary College

Explanation: The destination of students who left during or at the end of Year 10.

Source of data: Data retrieved electronically from CASES21 following February census.

Exit Destination	2004		2005		2006		2007		2008		2007 state^
	n	%	n	%	n	%	n	%	n	%	%
Continuing education and training											
Government School	5	14.3	2	6.5	4	12.1	9	16.7	9	17.0	42.5
Non-Government School	3	8.6	1	3.2			6	11.1	7	13.2	6.0
University											0.1
Other Training Provider	2	5.7	3	9.7			2	3.7			3.3
(new in 2007)											
TAFE / RTO / ACE							19	35.2	4	7.5	11.7
Apprenticeship / Traineeship											6.4
Home Schooling											0.4
Deferred											0.0
(ceased in 2007)											
School (non Victorian)			1	3.2							
TAFE	7	20.0	11	35.5	14	42.4					
Private Registered Training Organisation					3	9.1					
Adult and Community Education Organisation											
SUBTOTAL	17	48.6	18	58.1	21	63.6	36	66.7	20	37.7	70.5
Not continuing education and training											
Employed (part time)	1	2.9			3	9.1	1	1.9			1.7
Employed (full time)			4	12.9	3	9.1	4	7.4			6.5
Unemployed (seeking work)	2	5.7	4	12.9	3	9.1	1	1.9	1	1.9	4.8
Unemployed (not seeking work)†											1.3
SUBTOTAL	3	8.6	8	25.8	9	27.3	6	11.1	1	1.9	14.3
Unknown	15	42.9	5	16.1	3	9.1	12	22.2	32	60.4	15.2
TOTAL	35	100.0	31	100.0	33	100.0	54	100.0	53	100.0	100.0

Total Yr 10 February enrolment

352

247

252

240

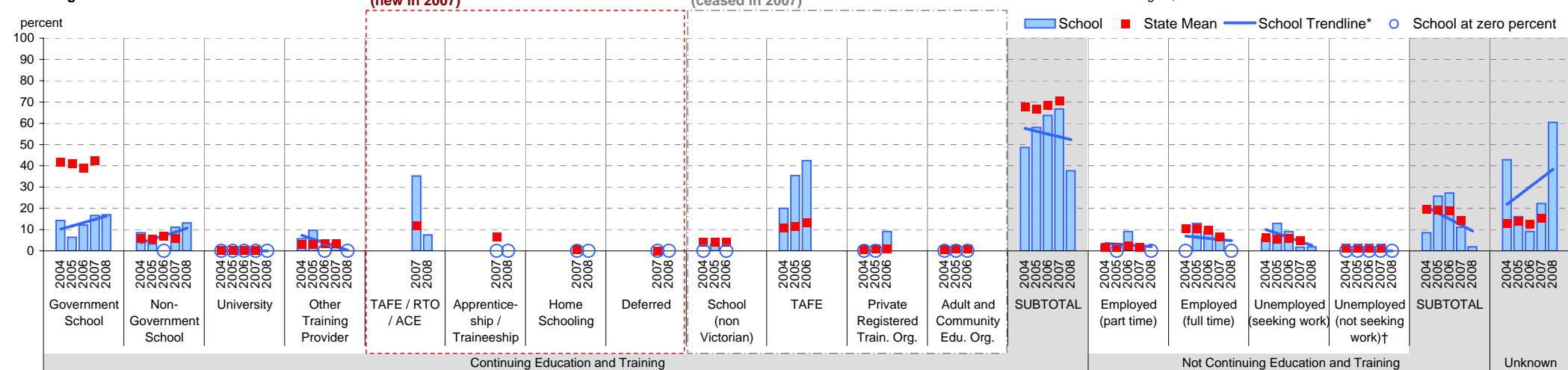
265

Notes: * The school trendline is being trialled. It is only plotted when there is data for each calendar year.

† Includes deceased students.

^ 2008 benchmarks will be calculated in August, when data from all schools has been submitted.

School against State



Exit Destination: Year 11

School no: 7603

School name: Berwick Secondary College

Explanation: The destination of students who left during or at the end of Year 11.

Source of data: Data retrieved electronically from CASES21 following February census.

Exit Destination	2004		2005		2006		2007		2008		2007 state [^]
	n	%	n	%	n	%	n	%	n	%	%
Continuing education and training											
Government School	3	4.3	3	4.3	3	4.3	8	10.0	9	17.6	18.6
Non-Government School	2	2.9			1	1.4	1	1.3	1	2.0	4.4
University							1	1.3			0.3
Other Training Provider	2	2.9	3	4.3	6	8.7	6	7.5			4.3
(new in 2007)											
TAFE / RTO / ACE							26	32.5	1	2.0	15.0
Apprenticeship / Traineeship											10.7
Home Schooling											0.4
Deferred											0.0
(ceased in 2007)											
School (non Victorian)			1	1.4	1	1.4					
TAFE	15	21.4	21	30.4	12	17.4					
Private Registered Training Organisation					3	4.3					
Adult and Community Education Organisation											
SUBTOTAL	22	31.4	28	40.6	26	37.7	42	52.5	11	21.6	53.9
Not continuing education and training											
Employed (part time)	4	5.7	6	8.7	11	15.9	9	11.3			4.1
Employed (full time)	6	8.6	13	18.8	14	20.3	7	8.8	4	7.8	13.7
Unemployed (seeking work)	6	8.6	4	5.8	6	8.7	7	8.8			9.1
Unemployed (not seeking work) [†]	1	1.4	1	1.4			1	1.3			1.8
SUBTOTAL	17	24.3	24	34.8	31	44.9	24	30.0	4	7.8	28.7
Unknown	31	44.3	17	24.6	12	17.4	14	17.5	36	70.6	17.4
TOTAL	70	100.0	69	100.0	69	100.0	80	100.0	51	100.0	100.0

Total Yr 11 February enrolment

319

332

235

235

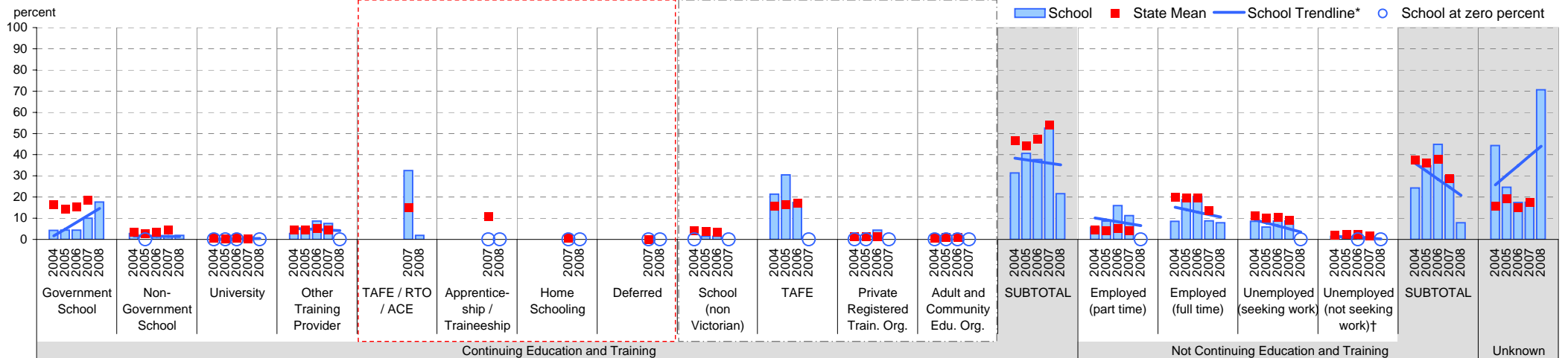
219

Notes: * The school trendline is being trialled. It is only plotted when there is data for each calendar year.

† Includes deceased students.

^ 2008 benchmarks will be calculated in August, when data from all schools has been submitted.

School against State



Exit Destination: Students who left Year 12 before completing the year

School no: 7603

School name: Berwick Secondary College

Explanation: The destination of students who left prior to completing Year 12.

Source of data: Data retrieved electronically from CASES21 following February census.

Exit Destination	2004		2005		2006		2007		2008		2007 state^
	n	%	n	%	n	%	n	%	n	%	%
Continuing education and training											
Government School	2	8.3			3	10.3	1	6.3	4	40.0	10.2
Non-Government School							1	6.3			1.8
University	1	4.2	1	4.0							1.1
Other Training Provider	2	8.3			3	10.3					3.5
(new in 2007)											
TAFE / RTO / ACE							4	25.0	2	20.0	14.7
Apprenticeship / Traineeship											7.5
Home Schooling											
Deferred											0.1
(ceased in 2007)											
School (non Victorian)			1	4.0							
TAFE	1	4.2	8	32.0	9	31.0					
Private Registered Training Organisation					1	3.4					
Adult and Community Education Organisation											
SUBTOTAL	6	25.0	10	40.0	16	55.2	6	37.5	6	60.0	39.0
Not continuing education and training											
Employed (part time)	3	12.5	2	8.0	1	3.4	1	6.3	2	20.0	6.0
Employed (full time)	7	29.2	5	20.0	5	17.2	4	25.0			21.6
Unemployed (seeking work)					1	3.4	1	6.3			12.8
Unemployed (not seeking work)†			2	8.0	1	3.4					2.9
SUBTOTAL	10	41.7	9	36.0	8	27.6	6	37.5	2	20.0	43.2
Unknown	8	33.3	6	24.0	5	17.2	4	25.0	2	20.0	17.8
TOTAL	24	100.0	25	100.0	29	100.0	16	100.0	10	100.0	100.0

Total Yr 12 February enrolment

321

267

279

179

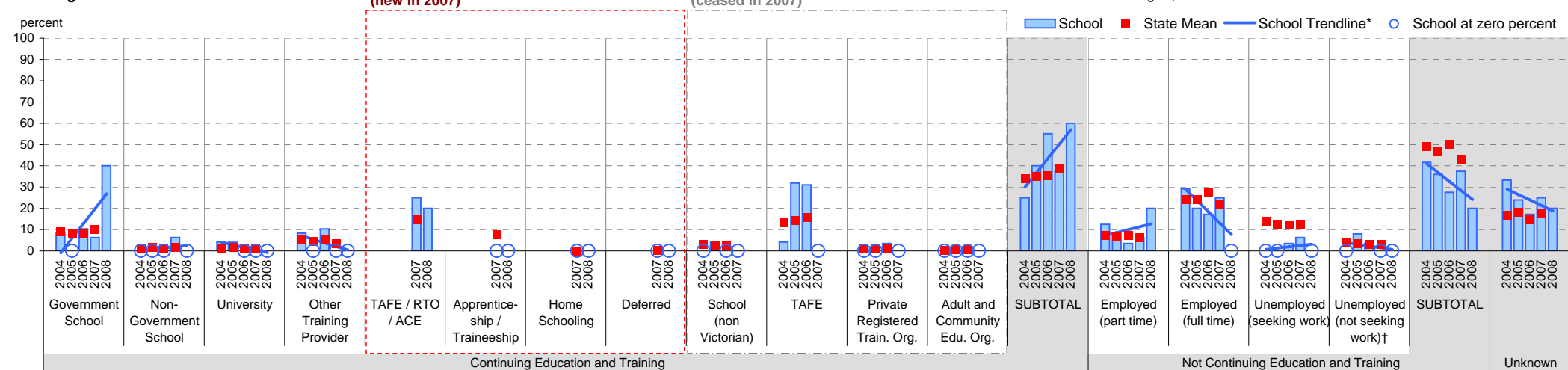
189

Notes: * The school trendline is being trialled. It is only plotted when there is data for each calendar year.

† Includes deceased students.

^ 2008 benchmarks will be calculated in August, when data from all schools has been submitted.

School against State



Exit Destination: Students who left at the end of Year 12

School no: 7603

School name: Berwick Secondary College

Explanation: The destination of students who left at the end of Year 12.

Source of data: Data retrieved electronically from CASES21 following February census.

Exit Destination	2004		2005		2006		2007		2008		2007 state^
	n	%	n	%	n	%	n	%	n	%	%
Continuing education and training											
Government School	1	0.3	1	0.4					1	0.6	1.2
Non-Government School											0.3
University	63	19.5	60	24.7	64	25.1	43	25.9	48	26.7	36.6
Other Training Provider	2	0.6	4	1.6	2	0.8	4	2.4	4	2.2	2.7
TAFE / RTO / ACE							59	35.5	39	21.7	22.7
Apprenticeship / Traineeship									7	3.9	5.6
Home Schooling											0.0
Deferred							9	5.4	12	6.7	4.1
(ceased in 2007)											
School (non Victorian)											
TAFE	81	25.1	81	33.3	63	24.7					
Private Registered Training Organisation	11	3.4	4	1.6	5	2.0					
Adult and Community Education Organisation											
SUBTOTAL	158	48.9	150	61.7	134	52.5	115	69.3	111	61.7	73.2
Not continuing education and training											
Employed (part time)	34	10.5	25	10.3	37	14.5	11	6.6	27	15.0	5.5
Employed (full time)	43	13.3	30	12.3	29	11.4	21	12.7	22	12.2	10.5
Unemployed (seeking work)	8	2.5	14	5.8	19	7.5	6	3.6	7	3.9	4.4
Unemployed (not seeking work)†	9	2.8	2	0.8	5	2.0	3	1.8	1	0.6	0.7
SUBTOTAL	94	29.1	71	29.2	90	35.3	41	24.7	57	31.7	21.1
Unknown	71	22.0	22	9.1	31	12.2	10	6.0	12	6.7	5.7
TOTAL	323	100.0	243	100.0	255	100.0	166	100.0	180	100.0	100.0

Total Yr 12 February enrolment

321

267

279

179

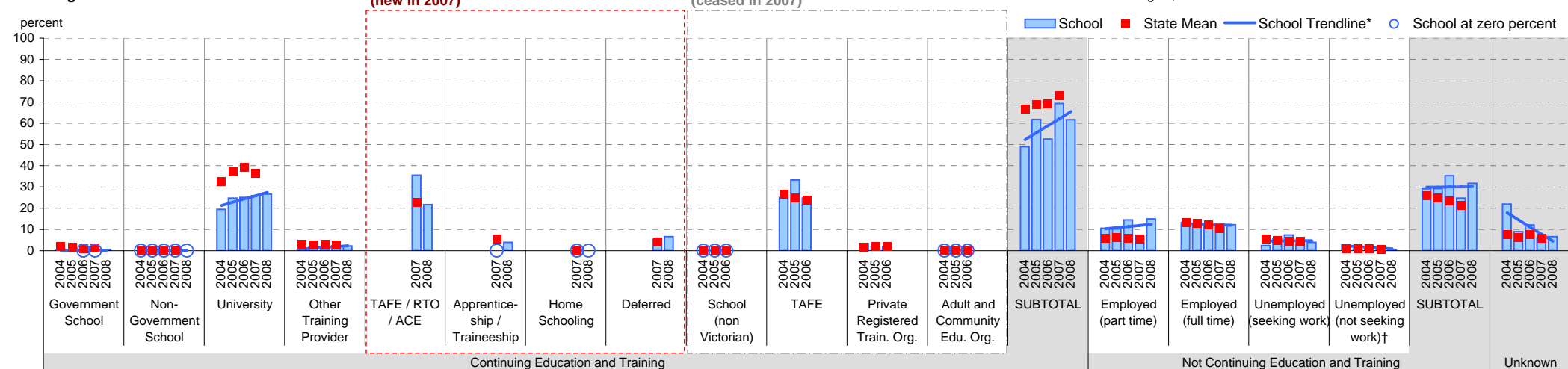
189

Notes: * The school trendline is being trialled. It is only plotted when there is data for each calendar year.

† Includes deceased students.

^ 2008 benchmarks will be calculated in August, when data from all schools has been submitted.

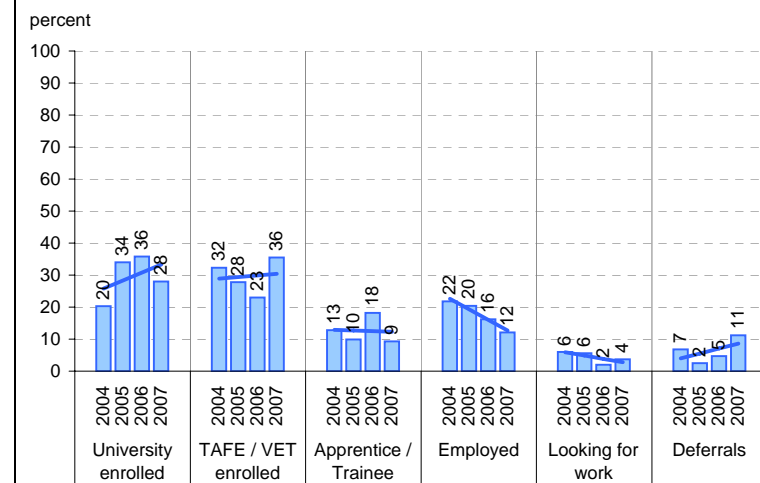
School against State



On Track

Source of data: Data received from a telephone survey of Year 12 completers, conducted in April / May of the subsequent year.

School only



Note: The exit destination data from On Track and CASES21 is not directly comparable for several reasons, one of which is the different bases. CASES21 data is based on all Year 12 completers, whereas On Track is based on Year 12 completers who responded to the survey. Hence the CASES21 data has an "unknown" category and the On Track data does not. Another reason is the slightly different categories for example, CASES21 includes a "home schooling" category.

Student Absence

School no: 7603

School name: Berwick Secondary College

Source of data: Data retrieved electronically from CASES21.

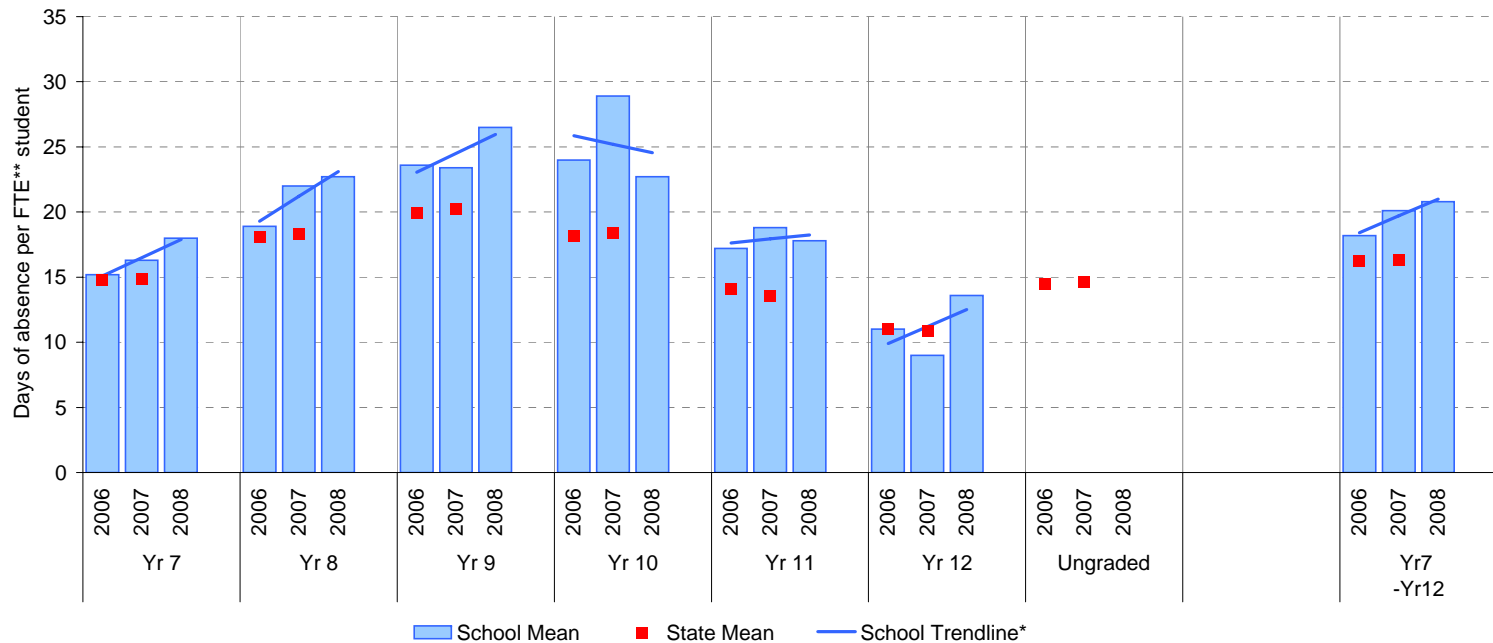
Explanation: The average (mean) number of absent days† per FTE** student.

Note that 20 absent days equates to 1 absent day per fortnight, and 10 absent days to 1 absent day per month.

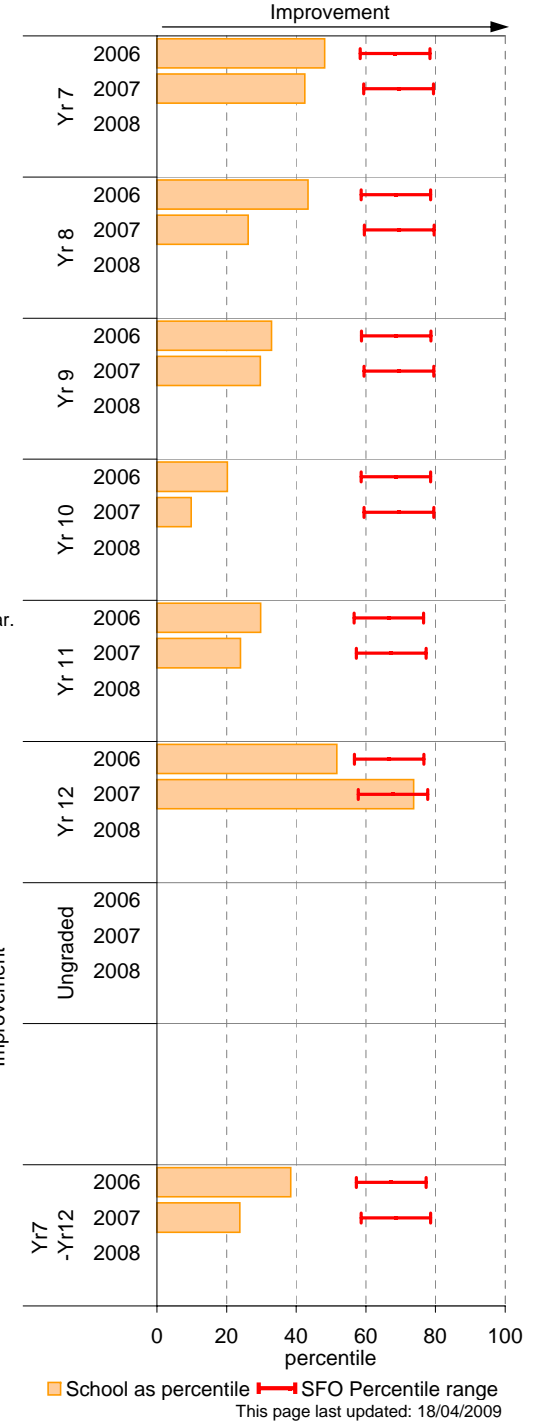
	School						2007 state benchmark^		
	2006		2007		2008		25th ptile	Mean	75th ptile
	Enrolments	Avg absent days / FTE** student	Enrolments	Avg absent days / FTE** student	Enrolments	Avg absent days / FTE** student			
Yr 7	274.5	15.2	321.1	16.3	287.4	18	12.6	14.9	18.6
Yr 8	249.3	18.9	274.1	22	334.0	22.7	15.1	18.3	22.2
Yr 9	242.3	23.6	248.9	23.4	273.4	26.5	15.9	20.2	24.8
Yr 10	249.6	24	236.8	28.9	259.9	22.7	15.2	18.4	22.8
Yr 11	227.0	17.2	225.1	18.8	209.7	17.8	10.9	13.5	18.5
Yr 12	259.1	11	168.6	9	180.9	13.6	8.3	10.9	14.8
Ungraded								14.6	
7-12 mean		18.2		20.1		20.8		16.3	

Notes: † Includes non-curriculum absences only (absence codes 200, 201, 202, 203, 205, 206, 207, 208, 209, 210, 211, 300, 401, 500, 700, 800, 804, 805, 900).
 * The school trendline is only plotted when there is data for each calendar year.
 ** FTE = Full Time Equivalent (including part-time and part-year fractions).
 ^ 2008 benchmarks and percentiles will be calculated in August, when data from all schools has been submitted.

School Mean against State Mean^



School Mean as percentile against SFO percentile range^



Parent Opinion

School no: 7603

School name: Berwick Secondary College

Explanation: A self-completion questionnaire to obtain parents' opinions of the school. Parents rated a number of statements using a scale where 1=strongly disagree & 7=strongly agree. The statements were grouped into the following categories.

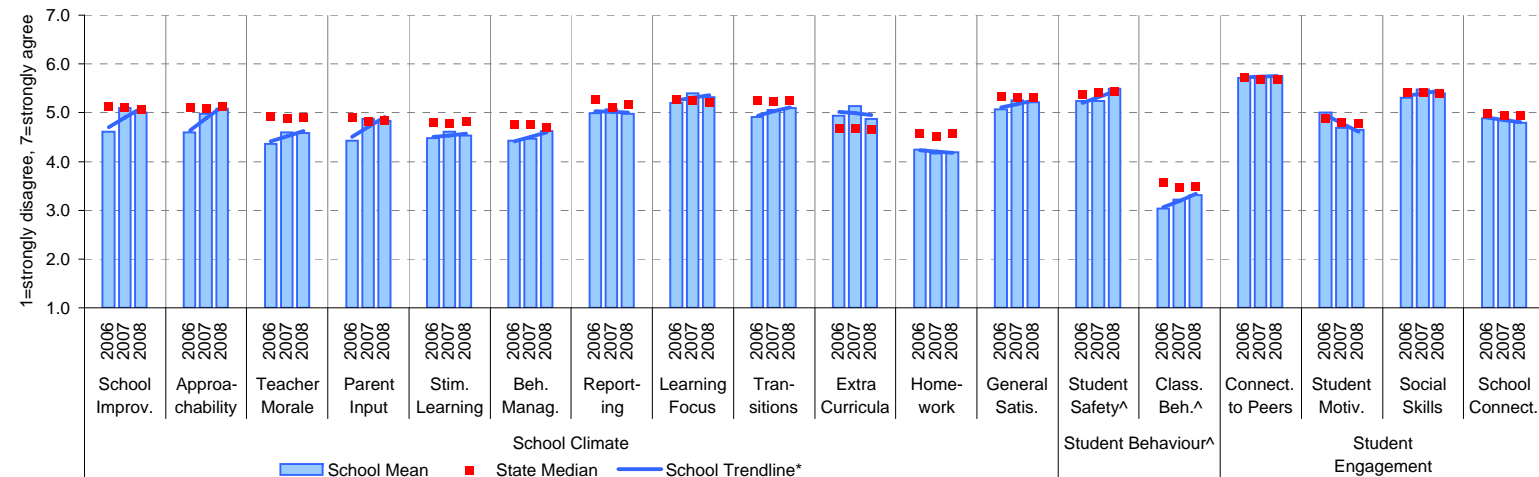
Source of data: Data scanned from questionnaires completed by parents.

Variable No.	Name	Year	School mean	State Secondary median
1	School Improvement	2006	4.61	5.13
		2007	5.09	5.11
		2008	5.01	5.07
2	Approachability	2006	4.60	5.11
		2007	4.97	5.10
		2008	5.08	5.12
3	Teacher Morale	2006	4.37	4.92
		2007	4.60	4.88
		2008	4.58	4.89
4	Parent Input	2006	4.42	4.89
		2007	4.87	4.83
		2008	4.84	4.84
5	Stimulating Learning	2006	4.47	4.81
		2007	4.61	4.79
		2008	4.53	4.82
6	Behaviour Management	2006	4.43	4.76
		2007	4.46	4.76
		2008	4.62	4.71
7	Reporting	2006	5.00	5.28
		2007	5.08	5.11
		2008	4.98	5.17

Variable No.	Name	Year	School mean	State Secondary median
8	Learning Focus	2006	5.21	5.27
		2007	5.40	5.24
		2008	5.32	5.22
9	Transitions	2006	4.92	5.24
		2007	5.06	5.23
		2008	5.09	5.24
10	Extra Curricula	2006	4.94	4.67
		2007	5.14	4.67
		2008	4.88	4.65
11	Homework	2006	4.24	4.57
		2007	4.17	4.51
		2008	4.19	4.57
12	General Satisfaction	2006	5.07	5.33
		2007	5.25	5.31
		2008	5.21	5.32
13	Student Safety^	2006	5.25	5.37
		2007	5.23	5.42
		2008	5.48	5.44
14	Classroom Behaviour^	2006	3.04	3.56
		2007	3.22	3.47
		2008	3.32	3.48

Variable No.	Name	Year	School mean	State Secondary median
15	Connectedness to Peers	2006	5.72	5.71
		2007	5.74	5.68
		2008	5.76	5.67
16	Student Motivation	2006	5.00	4.87
		2007	4.69	4.81
		2008	4.66	4.78
17	Social Skills	2006	5.30	5.42
		2007	5.48	5.41
		2008	5.40	5.40
18	School Connectedness	2006	4.89	4.99
		2007	4.87	4.95
		2008	4.80	4.94

School Mean against Secondary State Mean



Notes: * The school trendline is plotted when there is data for each calendar year.

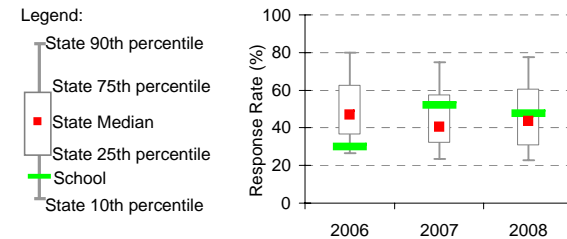
^^ Benchmarks available for Primary, Secondary, Pri/Sec, Special and SDS schools.

** If there were 6 or less respondents, table data is not shown for confidentiality reasons. If there were 3 or less respondents, graph data is not shown for confidentiality reasons.

^ Parents' responses to all negatively phrased questions have been reversed for reporting purposes. Across all variables, the higher the score or percentile rank, the more positive parents' perceptions.

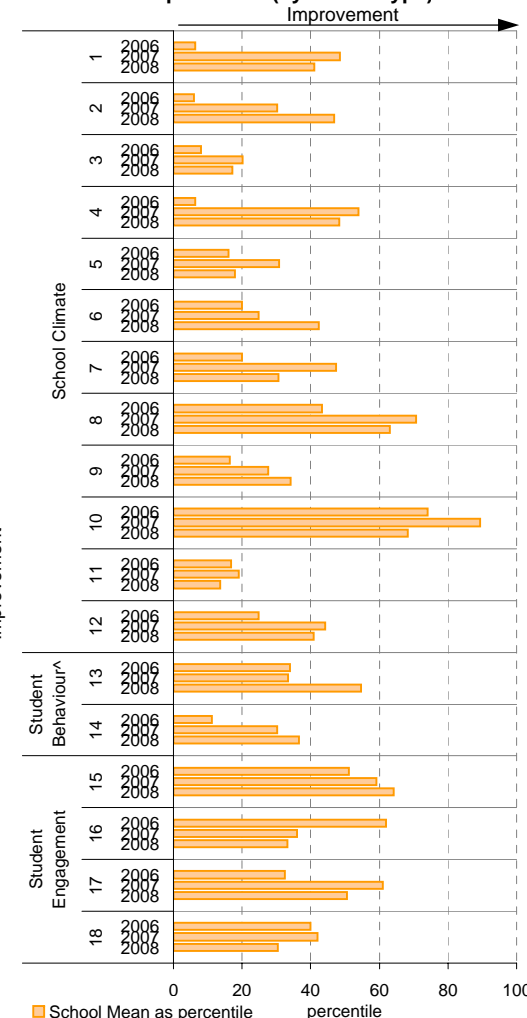
Produced by Data, Outcomes and Evaluation Division, DEECD

School response rate** against Secondary school distribution



Year	No. of respondents	No. invited	Response Rate
2006	74	247	30%
2007	130	250	52%
2008	117	246	47.6%

School Mean as percentile (by school type)



This page last updated: 18/04/2009

Staff Opinion

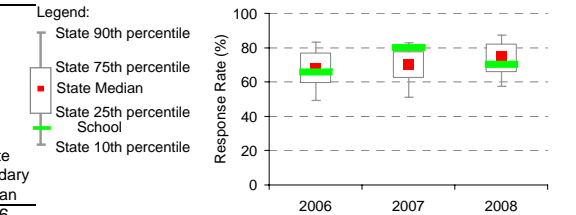
School no: 7603

School name: Berwick Secondary College

Explanation: A self-completion questionnaire to obtain the staff's opinions of the school. The survey was administered online using the School Organisational Health Questionnaire.

Source of data: Data transmitted from school staff to DEECD via an online survey application.

School response rate** against Secondary school distribution



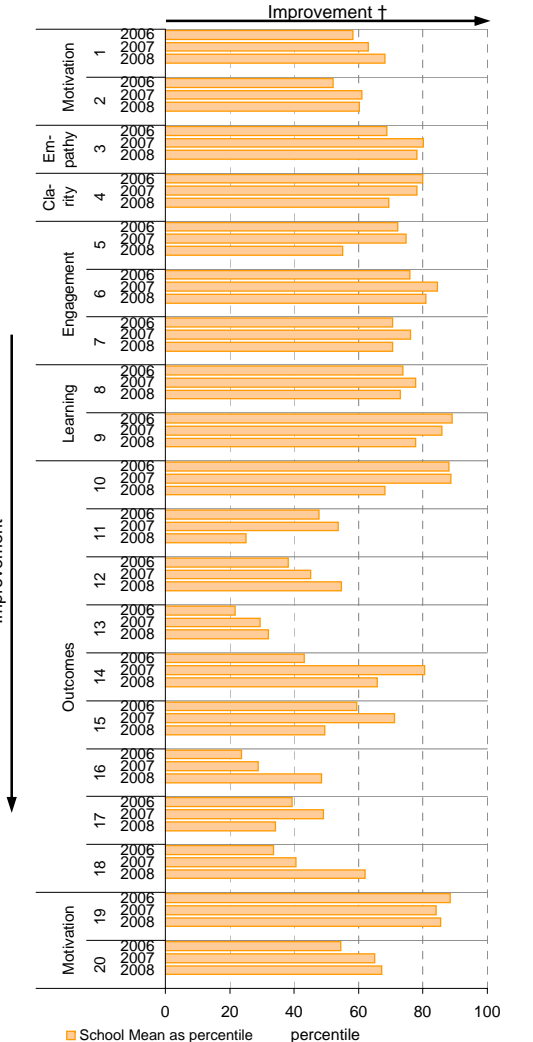
	No. of respondents	No. invited	Response Rate
2006	115	175	66%
2007	118	148	80%
2008	105	150	70%

Variable No.	Name	Year	School mean	State Secondary median
1	Individual Morale	2006	65.3	64.2
		2007	65.5	63.5
		2008	67.6	65.0
2	School Morale	2006	61.6	60.8
		2007	63.5	60.2
		2008	64.5	62.2
3	Supportive Leadership	2006	69.4	65.0
		2007	72.8	63.8
		2008	72.5	65.8
4	Role Clarity	2006	72.9	68.0
		2007	71.9	67.8
		2008	71.6	69.1
5	Professional Interaction	2006	72.4	68.1
		2007	72.6	68.3
		2008	70.9	70.4
6	Participative Decision-Making	2006	65.1	59.0
		2007	68.6	58.7
		2008	66.8	59.8
7	Goal Congruence	2006	68.5	64.7
		2007	70.3	65.3
		2008	70.1	66.4

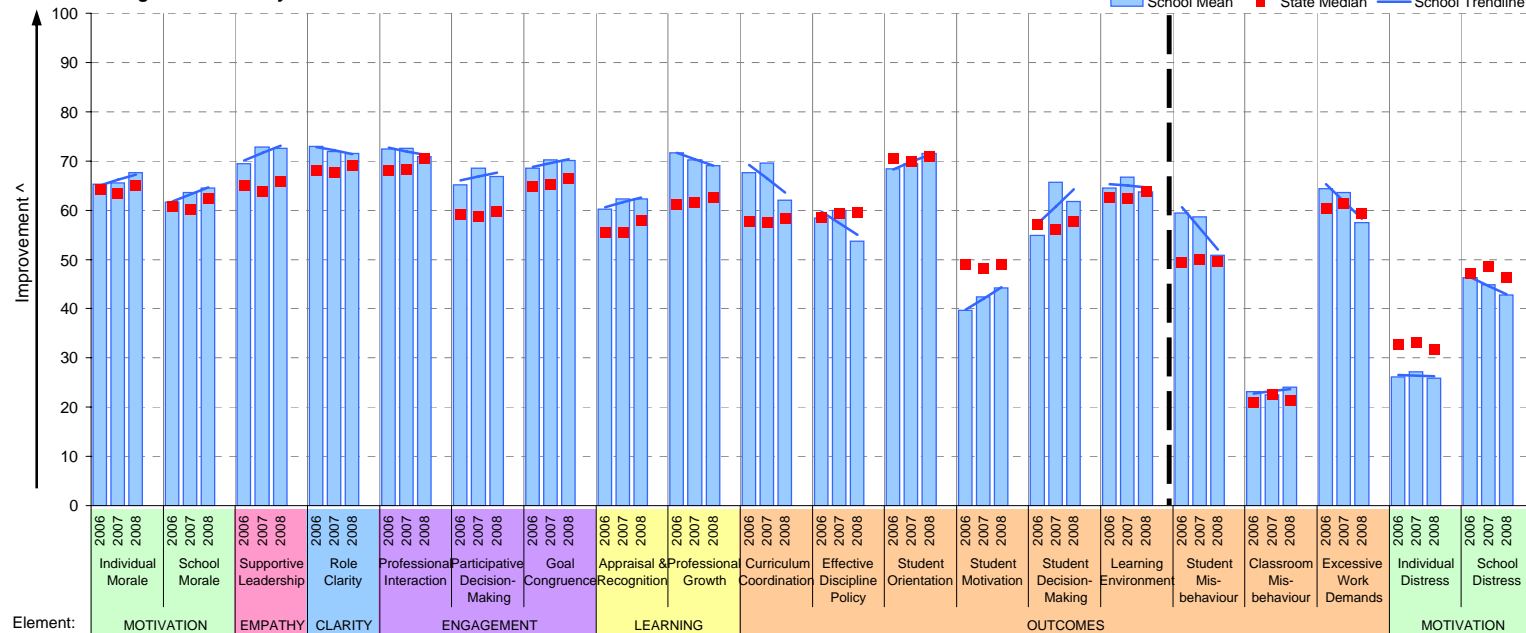
Variable No.	Name	Year	School mean	State Secondary median
8	Appraisal & Recognition	2006	60.2	55.6
		2007	62.3	55.4
		2008	62.2	57.9
9	Professional Growth	2006	71.7	61.2
		2007	70.2	61.6
		2008	69.1	62.7
10	Curriculum Coordination	2006	67.6	57.8
		2007	69.6	57.5
		2008	62.0	58.4
11	Effective Discipline Policy	2006	58.3	58.5
		2007	60.0	59.2
		2008	53.7	59.5
12	Student Orientation	2006	68.5	70.5
		2007	69.5	70.0
		2008	71.5	70.8
13	Student Motivation	2006	39.6	48.9
		2007	42.4	48.1
		2008	44.2	49.0
14	Student Decision-Making	2006	54.8	57.2
		2007	65.7	56.2
		2008	61.8	57.8

Variable No.	Name	Year	School mean	State Secondary median
15	Learning Environment	2006	64.5	62.6
		2007	66.8	62.3
		2008	63.8	63.8
16	Student Misbehaviour	2006	59.5	49.3
		2007	58.7	49.9
		2008	50.9	49.6
17	Classroom Misbehaviour	2006	23.1	20.9
		2007	22.5	22.4
		2008	24.0	21.4
18	Excessive Work Demands	2006	64.4	60.4
		2007	63.5	61.4
		2008	57.4	59.4
19	Individual Distress	2006	26.2	32.6
		2007	27.1	33.2
		2008	25.9	31.7
20	School Distress	2006	46.3	47.1
		2007	44.9	48.6
		2008	42.8	46.2

School Mean as percentile (by school type)



School Mean against Secondary State Median



Notes: * The school trendline is being trialled. It is only plotted when there is data for each calendar year.

** If there were 6 or less respondents, table data is not shown for confidentiality reasons. If there were 3 or less respondents, graph data is not shown for confidentiality reasons.

^ The higher the school mean, the more positive the outcome for variables 1 to 15. The lower the school mean, the more positive the outcome for variables 16 to 20.

† The higher the school percentile, the more positive the outcome for all variables.

^^ Benchmarks are available for Primary, Secondary, Pri/Sec, Special & SDS schools.

Performance & Development Culture (P&DC)^{††}

NEW

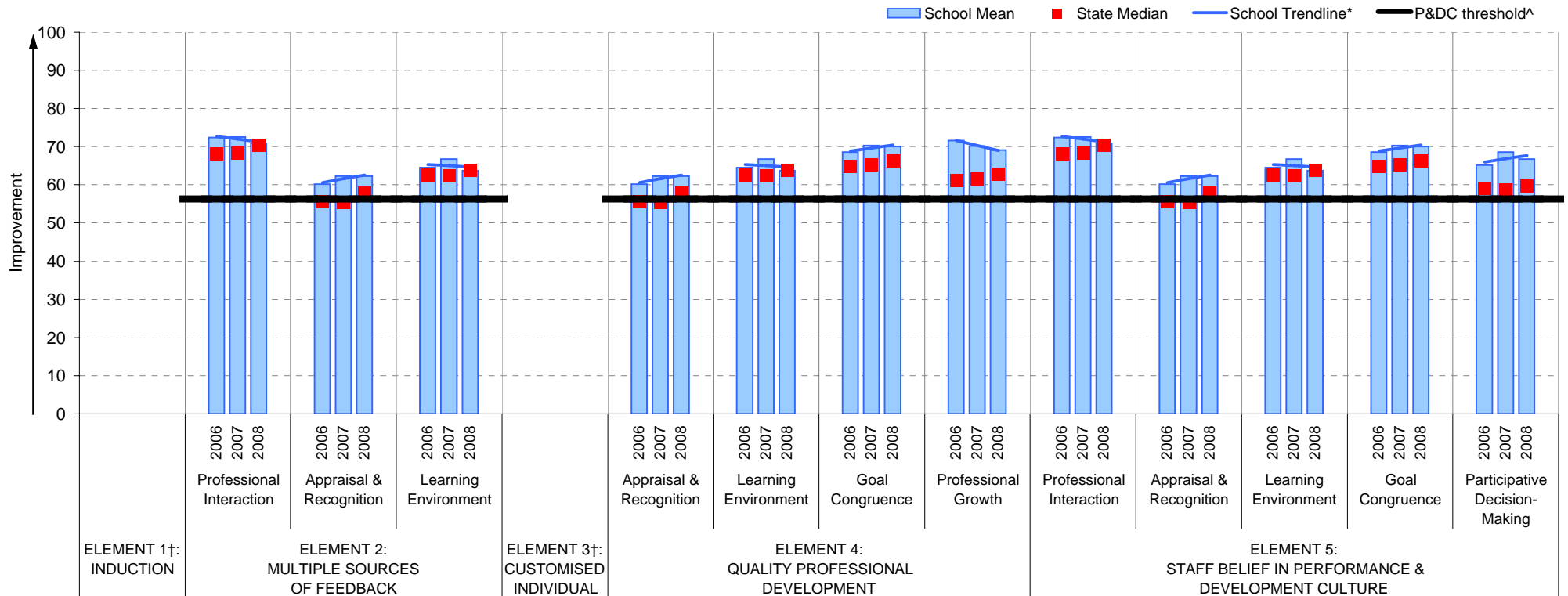
School no: 7603

School name: Berwick Secondary College

Explanation: The data on this page refers to the Staff Opinion Survey.

Source of data: Data transmitted from school staff to DEECD via an online survey application.

School Mean against Secondary State Median



Notes:

†† An assessment of the correlation between the P&DC Questionnaire and the Staff Opinion Survey was undertaken using data from Victorian Government schools that completed both surveys 2005 to 2007 (ie. 699 schools). This led to the identification of the components of the Staff Opinion Survey that could be used to assist schools with the ongoing monitoring of their performance and development culture. Refer to the P&DC website for further information: <http://www.education.vic.gov.au/management/schoolimprovement/panddc/default.htm>. For numerical ratings relating to the above graph, refer to the Staff Opinion Survey page in this report.

† Note that there is no significant correlation between the Staff Opinion Survey and P&DC elements 1 (Induction) and 3 (Customised Individual Development Plan).

^ The P&DC threshold was derived from the P&DC Questionnaire 'percent favourable' methodology where a school is considered at the standard of accreditation when their Element score is : favourable (ie. at least 75% of staff selected the top two response categories in the P&DC Questionnaire).

* The school trendline is only plotted when there is data for each calendar year.

** If there were 3 or less respondents, graph data is not shown for confidentiality reasons.

^^ Benchmarks are available for Primary, Secondary, Pri/Sec, Special & SDS schools.

Staff Sick Leave

School no: 7603

School name: Berwick Secondary College

Explanation: The number of non-certificated and total sick leave days taken per staff member. A detailed explanation on how staff sick leave is calculated is provided at: education.vic.gov.au/management/schoolimprovement/performance/performancefaq.htm.

Source of data: Human Resources Management System (HRMS)^.

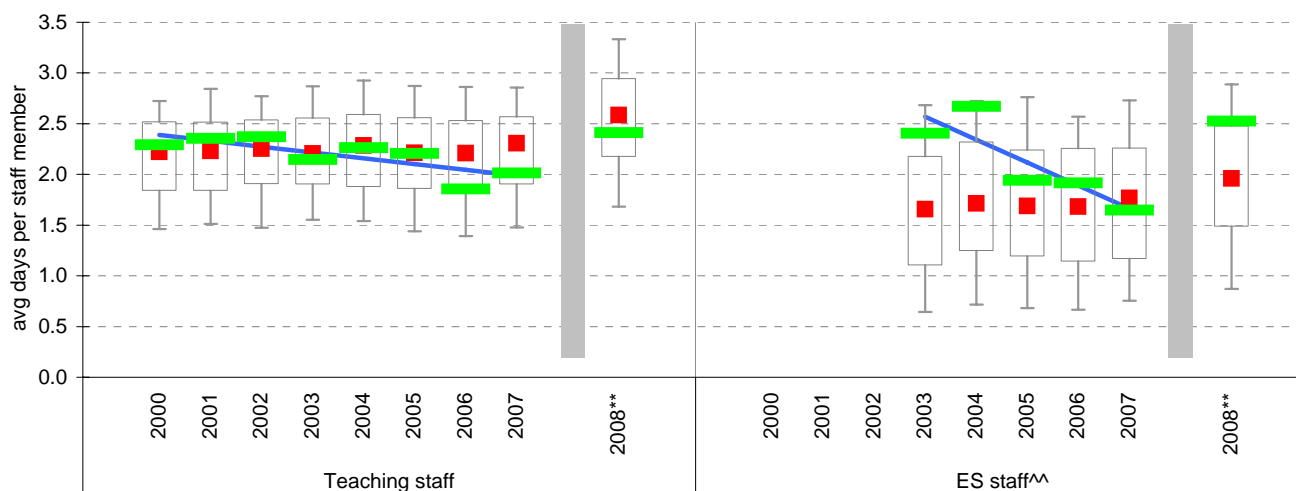
Non-Certificated sick leave days per staff member^

Staff Type	2000	2001	2002	2003	2004	2005	2006	2007	2008**	2008 State Median**
Teacher	2.29	2.36	2.37	2.14	2.26	2.21	1.86	2.01	2.41	2.59
ES^^					2.67	1.94	1.92	1.65	2.52	1.96

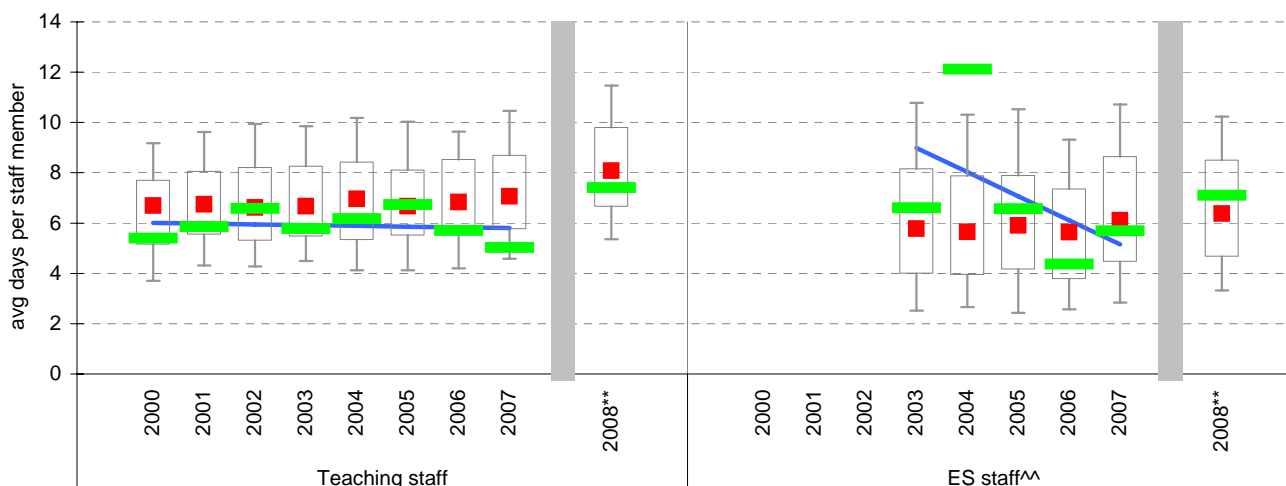
Total sick leave days per staff member^

Staff Type	2000	2001	2002	2003	2004	2005	2006	2007	2008**	2008 State Median**
Teacher	5.39	5.86	6.58	5.77	6.17	6.74	5.70	5.03	7.41	8.09
ES^^					12.11	6.57	4.36	5.69	7.10	6.38

NON-CERTIFICATED sick leave

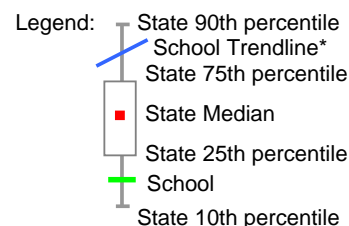


TOTAL sick leave



Notes:

- * The school trendline is only plotted when there is data for each calendar year.
- ** The way in which sick leave data are calculated changed in 2008. As such, data from 2008 cannot be compared with previous years.
- ^ There may be some discrepancy between the results from CASES21 and those from HRMS. The latter are considered to be more accurate.
- ^^ Data for ES (Education Support) staff is only available from 2003. In previous versions of this report, ES staff were known as SSO staff.



Teaching Staff Retention

School no: 7603

School name: Berwick Secondary College

Explanation: The retention rate of teaching staff is determined by matching staff payroll records for the last pay in June of one year (Year A), to the last pay in June of the following year (Year B).

Source of data: Human Resources Management System (HRMS).

Teaching Staff*

Year A	Year B	Number of Teaching Staff in Year A	Number of Teaching Staff retained in Year B	Teaching Staff Retention Rate	Statewide Average
2005	2006	126	110	87%	87%
2006	2007	136	116	85%	86%
2007	2008	127	104	82%	84%

Of the 126 teaching service staff at June 2005 (including those on leave without pay), 110 or 87% were still at the school at June 2006. This figure across all Government schools was 87%.

Of the 136 teaching service staff at June 2006 (including those on leave without pay), 116 or 85% were still at the school at June 2007. This figure across all Government schools was 86%.

Of the 127 teaching service staff at June 2007 (including those on leave without pay), 104 or 82% were still at the school at June 2008. This figure across all Government schools was 84%.

Ongoing Teaching Staff**^

Year A	Year B	Number of Ongoing Teaching Staff in Year A	Number of Ongoing Teaching Staff retained in Year B	Ongoing Teaching Staff Retention Rate	Statewide Average
2005	2006	98	91	93%	91%
2006	2007	107	99	93%	90%
2007	2008	108	89	82%	88%

Of the 98 ongoing teaching service staff at June 2005 (including those on leave without pay), 91 or 93% were still at the school at June 2006. This figure across all Government schools was 91%.

Of the 107 ongoing teaching service staff at June 2006 (including those on leave without pay), 99 or 93% were still at the school at June 2007. This figure across all Government schools was 90%.

Of the 108 ongoing teaching service staff at June 2007 (including those on leave without pay), 89 or 82% were still at the school at June 2008. This figure across all Government schools was 88%.

Notes: * Teaching staff includes Principal class, Teacher class and Instructor class. Teaching staff employed as visiting teachers, guidance officers, curriculum consultants, etc. are excluded as they are not charged to a particular school.

^ Not including fixed term staff, except for where staff had changed from ongoing in Year A to fixed term in Year B.

Bank Balances

School no: 7603

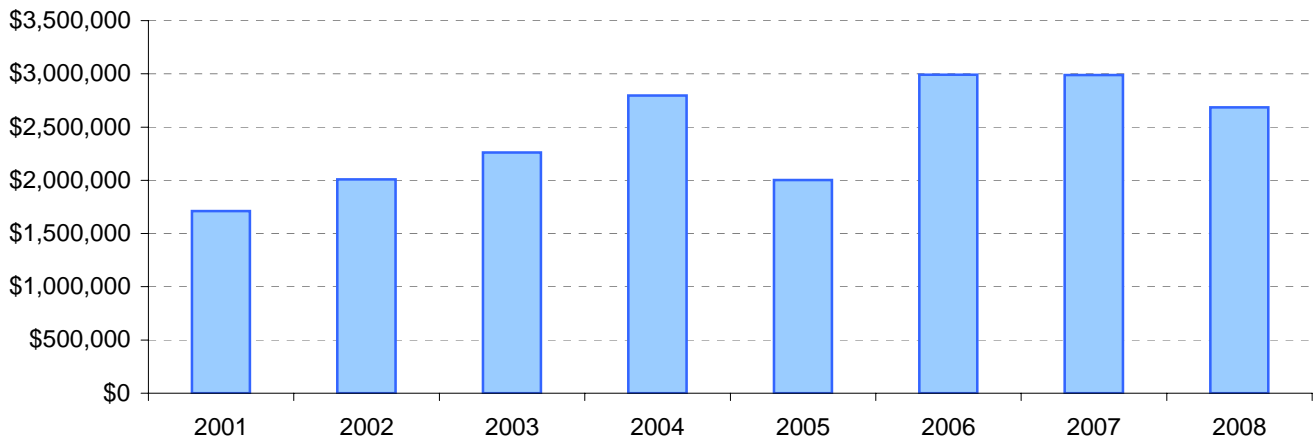
School name: Berwick Secondary College

Explanation: Account balance figures include official and investment accounts, and are calculated by taking the opening balance at 1st January plus the total receipts at 31st December less total payments at 31st December.

Account Balances (Official plus Investment Accounts)

2001	\$1,710,236	2005	\$2,002,124
2002	\$2,009,606	2006	\$2,992,497
2003	\$2,260,372	2007	\$2,989,405
2004	\$2,797,702	2008	\$2,685,564

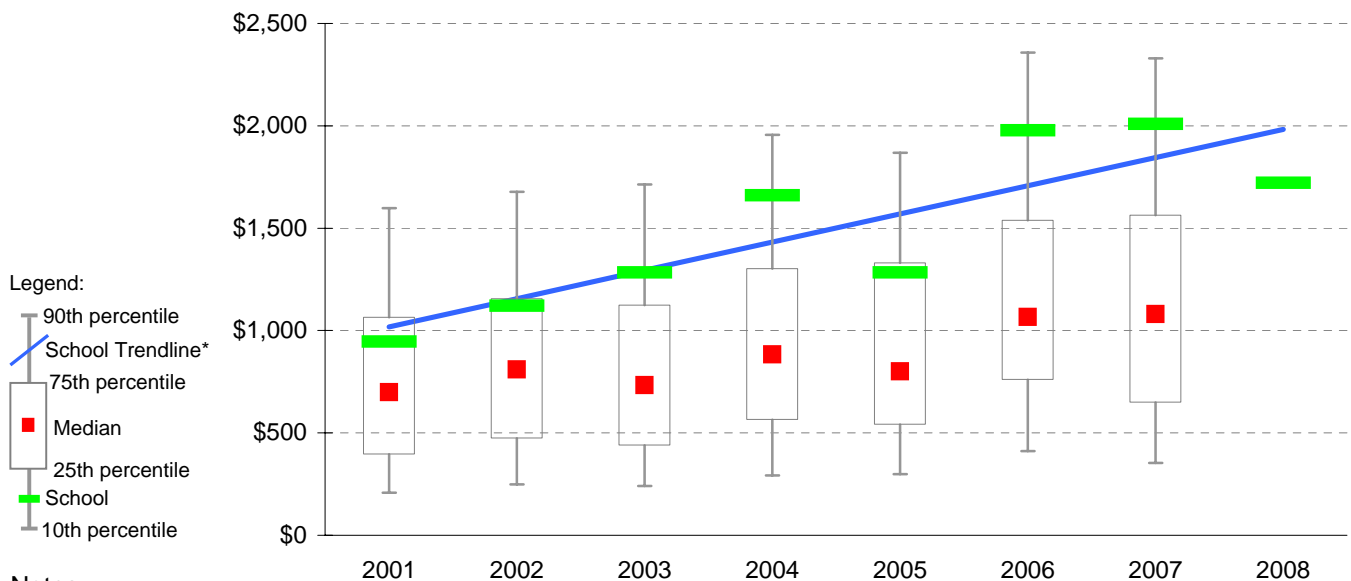
Account Balances



Account Balances (Official plus Investment Accounts) per student[†]

2001	\$946	2005	\$1,284
2002	\$1,121	2006	\$1,978
2003	\$1,284	2007	\$2,009
2004	\$1,661	2008	\$1,722

School account balances per student enrolled in August census plotted on state Secondary benchmarks[^]



Notes:

* The school trendline is being trialled. It is only plotted when there is data for each calendar year.

† The account balance per student has been calculated to enable some comparison to be made between schools.

^ Benchmarks for primary, secondary, pri/sec, SDS, special and language schools.